

District Data

Selected economic indicators of banking,
agricultural and business conditions in
the Eighth Federal Reserve District

The Regional Economist · January 1998

www.stls.frb.org

Commercial Bank Performance Ratios U.S., District and State

	All U.S.	U.S. <\$15B ¹	District	AR	IL	IN	KY	MS	MO	TN
Return on Average Assets (Annualized)										
3rd quarter 1997	1.30%	1.38%	1.34%	1.32%	1.14%	1.36%	1.29%	1.46%	1.28%	1.60%
2nd quarter 1997	1.31	1.34	1.33	1.30	1.27	1.34	1.27	1.48	1.27	1.53
3rd quarter 1996	1.24	1.33	1.31	1.34	1.03	1.29	1.26	1.50	1.32	1.45
Return on Average Equity (Annualized)										
3rd quarter 1997	15.75%	14.82%	15.11%	13.99%	12.92%	15.19%	14.85%	15.26%	15.42%	17.85%
2nd quarter 1997	15.86	14.46	14.55	12.15	14.40	15.09	14.69	15.66	14.18	17.38
3rd quarter 1996	15.24	14.68	14.80	14.07	10.22	14.25	14.36	15.62	15.90	17.33
Net Interest Margin (Annualized)										
3rd quarter 1997	4.36%	4.89%	4.46%	4.44%	4.35%	4.34%	4.38%	5.00%	4.48%	4.46%
2nd quarter 1997	4.36	4.85	4.43	4.43	4.34	4.36	4.34	5.09	4.39	4.46
3rd quarter 1996	4.38	4.81	4.39	4.51	4.23	4.41	4.53	4.97	4.15	4.41
Nonperforming Loans² ÷ Total Loans										
3rd quarter 1997	0.98%	1.06%	1.00%	0.99%	1.04%	0.60%	0.70%	0.59%	0.83%	1.96%
2nd quarter 1997	0.99	1.06	1.01	0.93	0.94	0.53	0.71	0.58	0.98	1.93
3rd quarter 1996	1.10	1.11	0.78	0.81	1.15	0.71	0.74	0.73	0.72	0.77
Net Loan Losses ÷ Average Total Loans (Annualized)										
3rd quarter 1997	0.64%	0.80%	0.37%	0.20%	0.54%	0.15%	0.33%	0.28%	0.31%	0.63%
2nd quarter 1997	0.62	0.77	0.37	0.20	0.53	0.17	0.34	0.26	0.35	0.59
3rd quarter 1996	0.57	0.70	0.31	0.20	0.39	0.23	0.39	0.29	0.27	0.40
Loan Loss Reserve ÷ Total Loans										
3rd quarter 1997	1.88%	1.88%	1.42%	1.35%	1.43%	1.30%	1.51%	1.47%	1.38%	1.43%
2nd quarter 1997	1.90	1.88	1.46	1.38	1.44	1.28	1.53	1.50	1.52	1.41
3rd quarter 1996	1.96	1.84	1.51	1.34	1.56	1.35	1.51	1.54	1.62	1.50

¹ U.S. banks with average assets of less than \$15 billion are shown separately to make comparisons with District banks more meaningful, as there are no District banks with average assets greater than \$15 billion.

² Includes loans 90 days or more past due and nonaccrual loans

NOTE: Data include only that portion of the state within Eighth District boundaries.

SOURCE: FFIEC Reports of Condition and Income for all Insured U.S. Commercial Banks

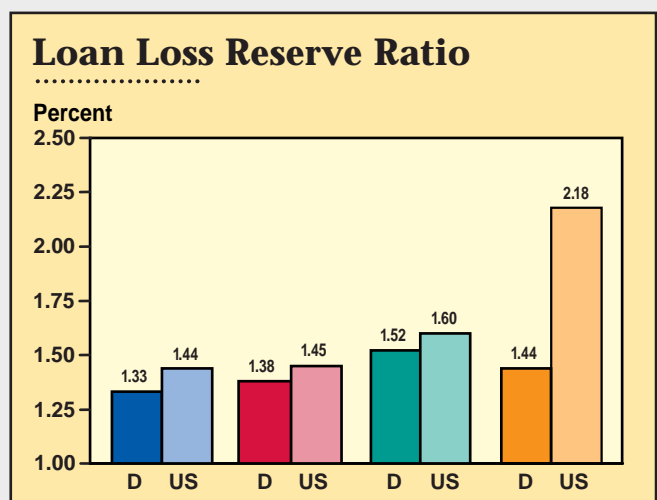
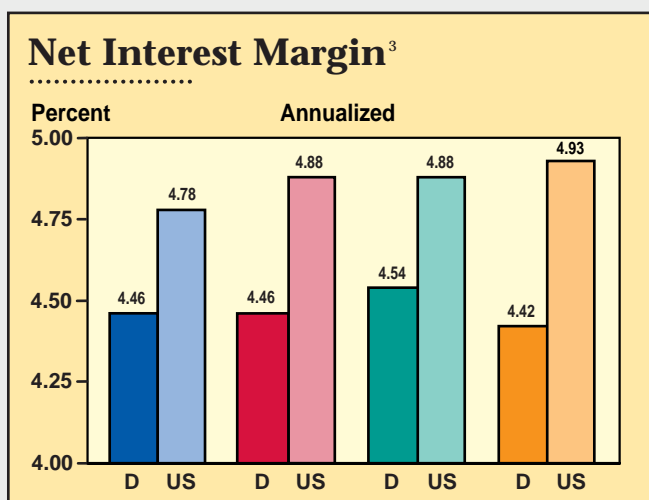
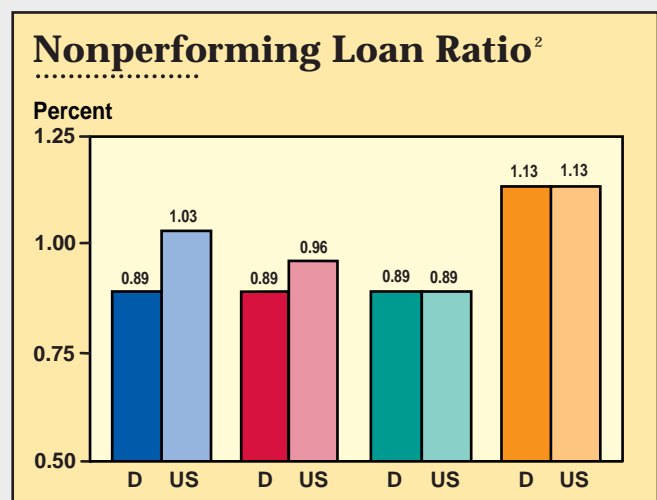
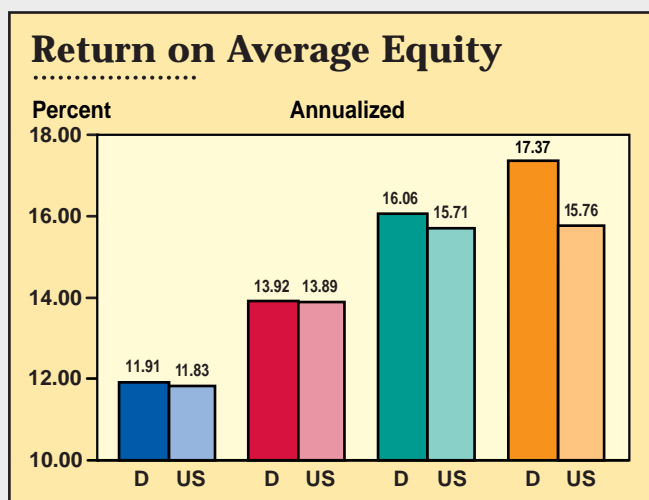
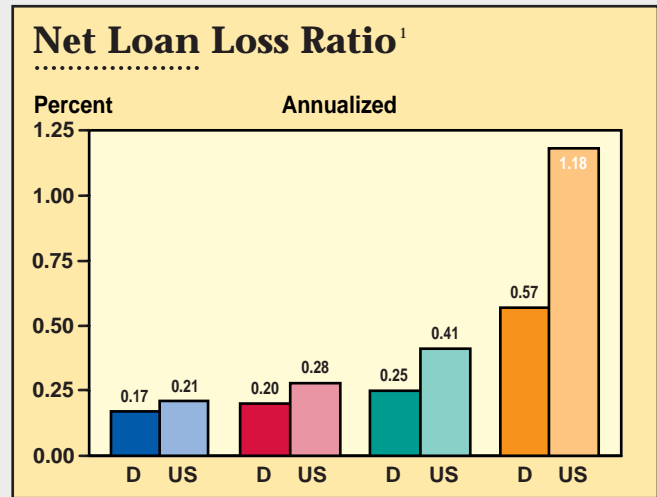
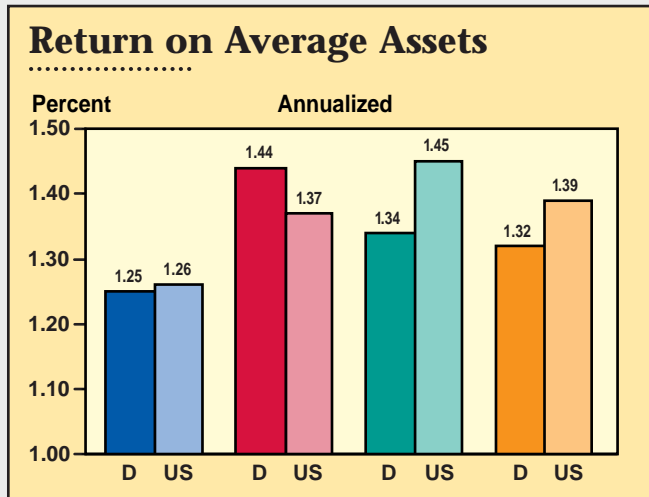
Commercial Bank Performance Ratios

by Asset Size

3rd Quarter 1997

Earnings

Asset Quality



D = District US = United States	< \$100 Million	\$300 Million - \$1 Billion
	\$100 Million - \$300 Million	\$1 Billion - \$15 Billion

¹ Loan losses are adjusted for recoveries.

² Includes loans 90 days or more past due and nonaccrual loans

³ Interest income less interest expense as a percent of average earning assets

NOTE: Asset quality ratios are calculated as a percent of total loans.

SOURCE: FFIEC Reports of Condition and Income for all Insured U.S. Commercial Banks

Agricultural Bank Performance Ratios

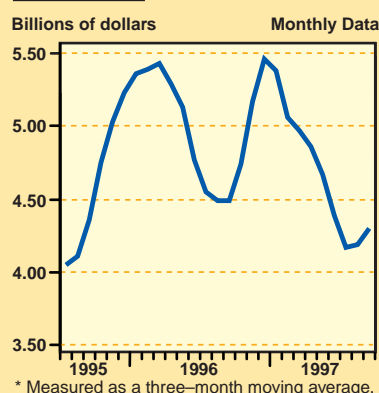
	U.S.	AR	IL	IN	KY	MS	MO	TN
Return on average assets (annualized)								
3rd quarter 1997	1.33%	1.42%	1.31%	1.26%	1.46%	1.55%	1.31%	1.36%
2nd quarter 1997	1.32	1.41	1.32	1.27	1.47	1.55	1.31	1.38
3rd quarter 1996	1.30	1.43	1.25	1.31	1.49	1.65	1.33	1.40
Return on average equity (annualized)								
3rd quarter 1997	12.70%	13.13%	11.83%	12.57%	13.62%	16.53%	12.36%	13.58%
2nd quarter 1997	12.53	12.71	12.00	12.99	13.84	16.62	12.45	12.56
3rd quarter 1996	12.64	13.25	11.44	14.08	14.36	18.02	12.91	13.27
Net interest margin (annualized)								
3rd quarter 1997	4.62%	4.46%	4.16%	4.56%	4.60%	5.08%	4.48%	4.43%
2nd quarter 1997	4.59	4.42	4.18	4.44	4.56	5.03	4.47	4.63
3rd quarter 1996	4.53	4.40	4.14	4.55	4.62	5.32	4.53	4.55
Ag loan losses ÷ average ag loans (annualized)								
3rd quarter 1997	0.15%	0.08%	-0.05%	-0.61%	0.15%	0.24%	0.11%	0.02%
2nd quarter 1997	0.15	0.05	-0.04	-1.00	0.17	0.32	0.24	-0.03
3rd quarter 1996	0.30	0.07	0.14	0.12	0.24	0.79	0.32	0.23
Ag nonperforming loans¹ ÷ total ag loans								
3rd quarter 1997	1.33%	0.68%	0.71%	3.43%	1.70%	0.89%	1.65%	0.34%
2nd quarter 1997	1.59	0.97	0.77	0.21	1.64	1.16	1.59	0.42
3rd quarter 1996	1.63	0.54	1.06	2.22	1.26	1.87	0.85	0.04

¹ Includes loans 90 days or more past due and nonaccrual loans

NOTE: Agricultural banks are defined as those banks with a greater than average share of agricultural loans to total loans. Data include only that portion of the state within Eighth District boundaries.

SOURCE: FFIEC Reports of Condition and Income for Insured U.S. Commercial Banks

U.S. Agricultural Exports*



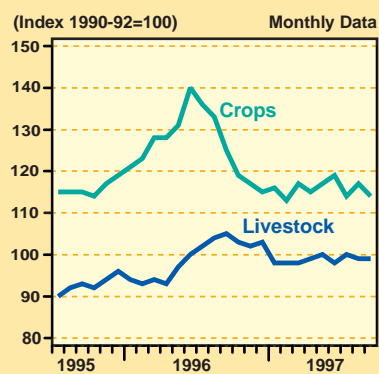
U.S. Agricultural Exports by Commodity

Dollar amounts in billions

Commodity	Jul	Aug	Sep	Year-to-date	Change from year ago
Livestock & products	.94	.99	.92	10.89	-0.7%
Corn	.29	.42	.42	6.11	-27.0
Cotton	.19	.17	.11	2.74	-10.0
Rice	.06	.05	.05	.96	-4.0
Soybeans	.20	.31	.34	6.95	10.0
Tobacco	.06	.07	.09	1.61	16.0
Wheat	.38	.50	.50	4.12	-40.0
TOTAL ¹	4.00	4.43	4.49	57.37	-4.0

¹ Includes commodities not listed here

U.S. Crop and Livestock Prices



Indexes of Food and Agricultural Prices

	Level			Growth ¹	
	III/97	II/97	III/96	II/97-III/97	III/96-III/97
Prices received by U.S. farmers²	107	107	117	0.0%	-8.5%
Prices received by District farmers³					
Arkansas	141	143	143	-5.5	-1.4
Illinois	113	120	144	-21.4	-21.5
Indiana	112	122	144	-29.7	-22.0
Missouri	107	111	119	-13.7	-10.1
Tennessee	N.A.	N.A.	143	N.A.	N.A.
Prices paid by U.S. farmers					
Production items	116	117	116	-3.4	0.0
Other items	116	117	115	-3.4	0.6
Consumer food prices	158	157	154	3.6	2.4
Consumer nonfood prices	161	161	158	1.8	2.2

¹ Compounded annual rates of change are computed from unrounded data.

² Index of prices received for all farm products and prices paid (1990-92=100)

³ Indexes for Kentucky and Mississippi are unavailable.

⁴ N.A. — Not Available

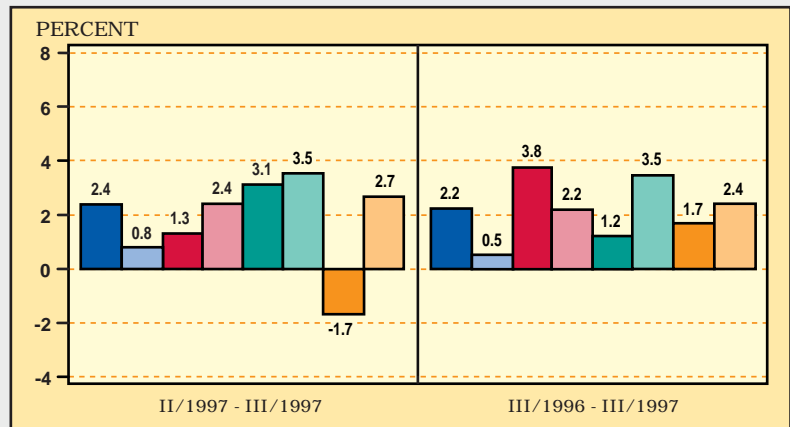
NOTE: Data not seasonally adjusted except for consumer food prices and nonfood prices.

Selected U.S. and State Business Indicators

United States

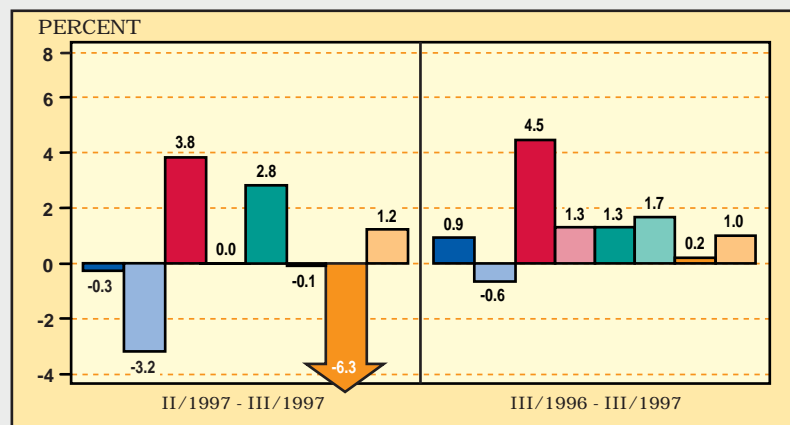
	III/1997	II/1997	III/1996
Labor force (in thousands)	136,412	136,157	134,118
Total nonagricultural employment (in thousands)	122,575	121,854	119,898
Unemployment rate	4.9%	4.9%	5.3%
	II/1997	I/1997	II/1996
Real personal income* (in billions)	\$4,264.6	\$4,224.3	\$4,130.4

Compounded Annual Rates of Change in Nonagricultural Employment



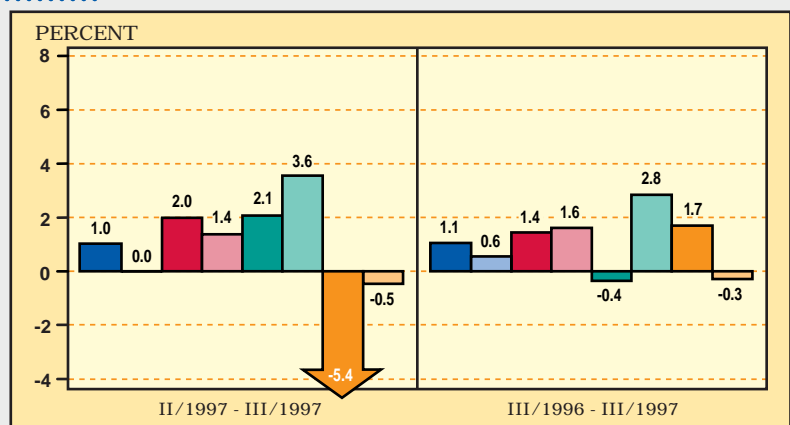
Arkansas

	III/1997	II/1997	III/1996
Labor force (in thousands)	1,246.0	1,241.5	1,237.8
Total nonagricultural employment (in thousands)	1,096.8	1,097.6	1,086.7
Unemployment rate	5.3%	4.8%	5.6%
	II/1997	I/1997	II/1996
Real personal income* (in billions)	\$31.3	\$30.7	\$30.4



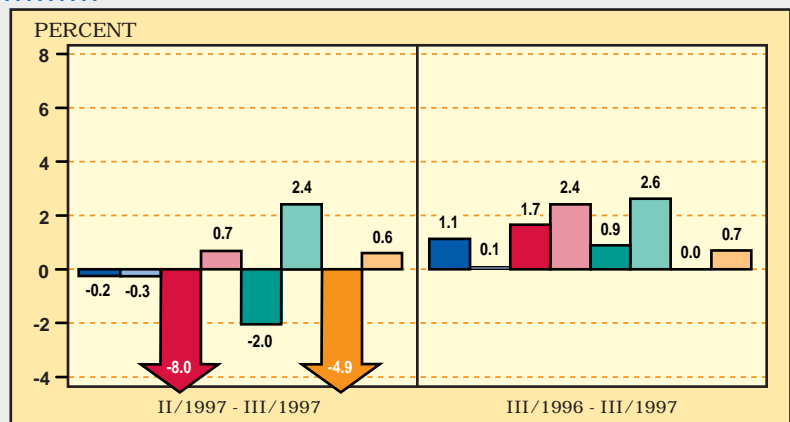
Illinois

	III/1997	II/1997	III/1996
Labor force (in thousands)	6,141.1	6,126.1	6,105.6
Total nonagricultural employment (in thousands)	5,757.5	5,742.9	5,697.5
Unemployment rate	4.6%	4.5%	5.3%
	II/1997	I/1997	II/1996
Real personal income* (in billions)	\$208.8	\$206.5	\$202.2



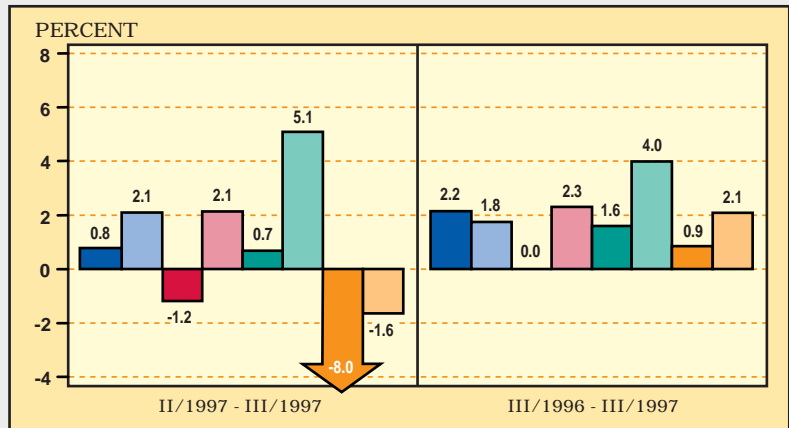
Indiana

	III/1997	II/1997	III/1996
Labor force (in thousands)	3,121.5	3,104.2	3,062.6
Total nonagricultural employment (in thousands)	2,847.1	2,848.8	2,815.4
Unemployment rate	3.4%	3.2%	4.0%
	II/1997	I/1997	II/1996
Real personal income* (in billions)	\$86.2	\$85.3	\$84.0



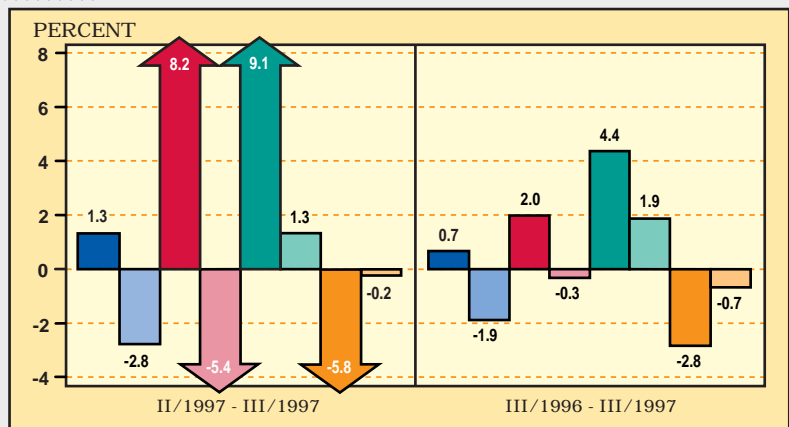
Kentucky

	III/1997	II/1997	III/1996
Labor force (in thousands)	1,926.4	1,921.6	1,867.2
Total nonagricultural employment (in thousands)	1,710.9	1,707.6	1,674.9
Unemployment rate	5.3%	5.2%	5.6%
<hr/>			
	II/1997	I/1997	II/1996
Real personal income* (in billions)	\$50.5	\$50.0	\$48.9



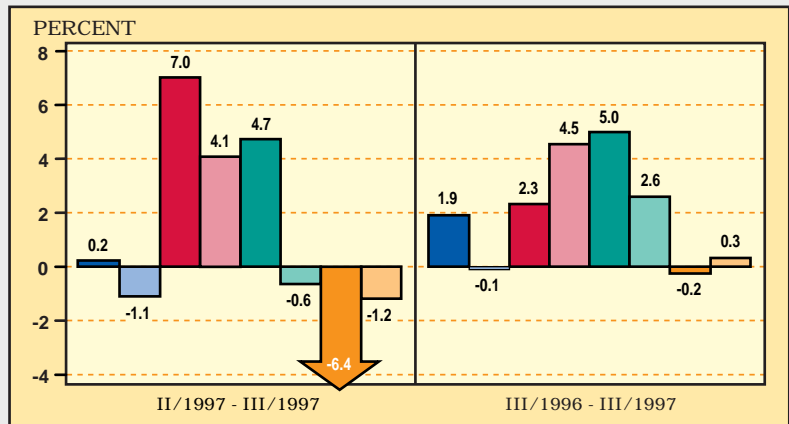
Mississippi

	III/1997	II/1997	III/1996
Labor force (in thousands)	1,276.6	1,270.4	1,260.5
Total nonagricultural employment (in thousands)	1,103.1	1,099.5	1,095.8
Unemployment rate	5.5%	5.0%	6.0%
<hr/>			
	II/1997	I/1997	II/1996
Real personal income* (in billions)	\$31.1	\$30.8	\$30.4



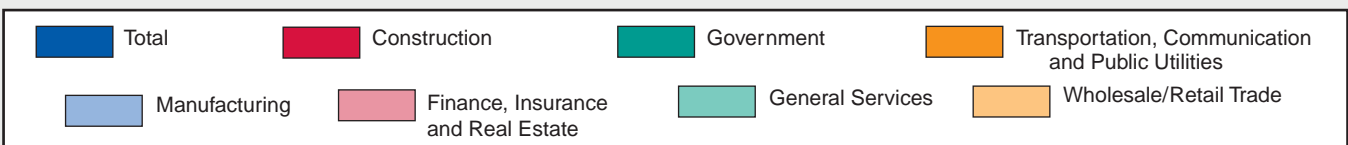
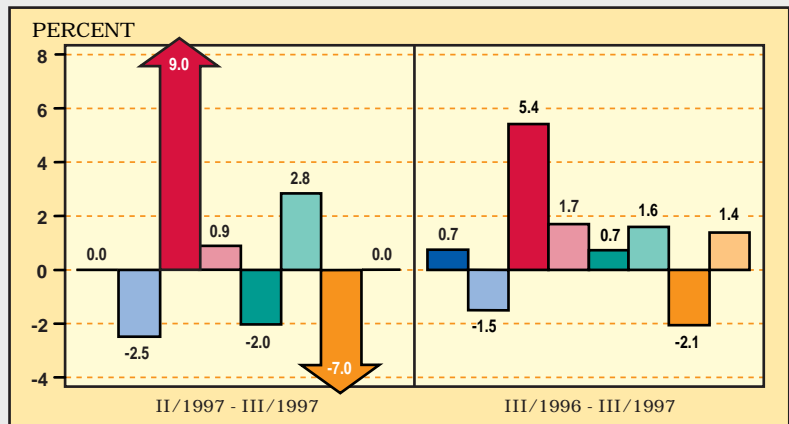
Missouri

	III/1997	II/1997	III/1996
Labor force (in thousands)	2,857.4	2,860.7	2,900.8
Total nonagricultural employment (in thousands)	2,607.8	2,606.3	2,559.0
Unemployment rate	3.7%	4.1%	4.6%
<hr/>			
	II/1997	I/1997	II/1996
Real personal income* (in billions)	\$81.1	\$80.4	\$78.5



Tennessee

	III/1997	II/1997	III/1996
Labor force (in thousands)	2,764.4	2,757.9	2,754.1
Total nonagricultural employment (in thousands)	2,552.4	2,552.5	2,533.5
Unemployment rate	5.3%	5.1%	5.0%
<hr/>			
	II/1997	I/1997	II/1996
Real personal income* (in billions)	\$76.8	\$76.0	\$74.3



NOTE: All data are seasonally adjusted. The nonagricultural employment data reflect the most current benchmark revision.
* Annual rate. Data deflated by CPI, 1982-84=100.