



Consult ALFRED™, our new source of vintage economic data, at [research.stlouisfed.org/tips/alfred/](http://research.stlouisfed.org/tips/alfred/).

## Trends in Home Ownership

The housing market appears to be cooling down after a long and prosperous run. Home prices may be retreating a bit in some of the hottest markets, but no one expects a widespread decline in home prices. One reason for this is the recent rise in home ownership rates.

In 2001, there were 119.1 million housing units in the United States; 12.9 million units were vacant or seasonal, while 106.2 million were occupied as primary residences. Of those, 72 million were owner-occupied. The home ownership rate is defined as the number of units that are owner-occupied divided by the number of units occupied as primary residences. For 30 years, from 1965 to 1995, the average home ownership rate in the United States varied narrowly around 64 percent. Despite a wide variety of policies by government at all levels to stimulate home-ownership, the rate seemed stuck permanently near that level. In 1995, however, the trend turned upward and now exceeds 68 percent. What explains the rise over the past decade?

The demographics of home ownership may provide clues to understanding the rising trend in home ownership. The table shows that the average home ownership rate rose a mere 0.2 percent during the decade beginning in 1985. But this relatively flat trend masked considerable divergence among age groups. The home ownership rate for people aged 65 years and older rose by 3.4 percentage points, while the rates for all other age groups fell. The younger the group, the greater the decline.

Since 1995, home ownership among the oldest group has continued to rise at the same rate as before. But the home ownership rates for all the younger groups stopped falling and began to rise. The turnaround was greatest for the two youngest groups. Understanding these trends requires an understanding of how the costs and benefits of home-ownership have changed.

Interest payments are an important part of the cost of home ownership, and mortgage interest rates have generally fallen since the early 1980s. This decline in interest rates, however, has been offset by a rise in housing prices so that the median mortgage payment as a percent of median income, though it has declined, has not declined smoothly over the past two decades. This index of housing cost fell quite dramatically, from 28.7 percent in January 1985 to 19.4 percent in December 1994. The index fluctuated between 17 percent and 20 percent after 1995 and now stands around 21 percent.

A series of financial innovations has also contributed to the rise in younger home owners by allowing them to buy homes with little or no down payment. Examples include government programs by both the Clinton and Bush administrations to assist first-time buyers and the use of mortgage insurance and combination loans to reduce down payment requirements. A recent study finds that these innovations affecting the size of the down payment are the most important factor explaining the rise in home ownership, especially for young and first-time buyers.<sup>1</sup>

—William T. Gavin

<sup>1</sup> See Matthew S. Chambers, Carlos Garriga, and Dan Schlagenhauf, "Accounting for Changes in the Home Ownership Rate," Working Paper, Florida State University, 2005.

### Home Ownership

Age group	Rate in 1985	Percentage-point change in home ownership rate		Rate in 2004
		1985-1994	1995-2004	
Less than 35 years	39.9	-6.7	9.2	42.3
35 to 44 years	68.1	-5.4	5.4	68.8
45 to 54 years	75.9	-0.9	2.4	77.0
55 to 64 years	79.5	-0.3	2.7	81.7
65 years and over	74.8	3.4	3.3	80.7
U.S. total	63.9	0.2	5.9	68.6

Views expressed do not necessarily reflect official positions of the Federal Reserve System.

# Contents

---

---

## Page

3	Economy at a Glance
4	Output and Growth
7	Interest Rates
8	Inflation and Prices
10	Labor Markets
12	Consumer Spending
14	Investment Spending
16	Government Revenues, Spending, and Debt
18	International Trade
20	Productivity and Profits
22	Quick Reference Tables
27	Notes and Sources

## Conventions used in this publication:

1. Shaded areas indicate recessions, as determined by the National Bureau of Economic Research.
2. *Percent change* refers to simple percent changes. *Percent change from year ago* refers to the percent change from the same month or quarter during the previous year. *Compounded annual rate of change* shows what the growth rate would be over an entire year if the same simple percent change continued for four quarters or twelve months. The compounded annual rate of change of  $x$  between the previous quarter  $t-1$  and the current quarter  $t$  is:  $[(x_t/x_{t-1})^4 - 1] \times 100$ . For monthly data replace 4 with 12.
3. All data with significant seasonal patterns are adjusted accordingly, unless labeled NSA.

We welcome your comments addressed to:

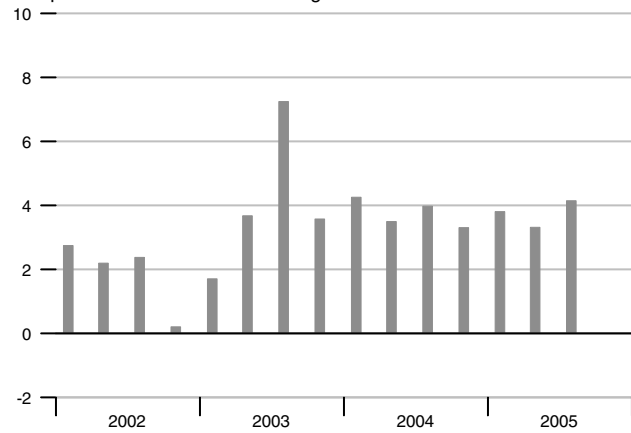
Editor, *National Economic Trends*  
Research Division  
Federal Reserve Bank of St. Louis  
P.O. Box 442  
St. Louis, MO 63166-0442

or to:

stlsFRED@stls.frb.org

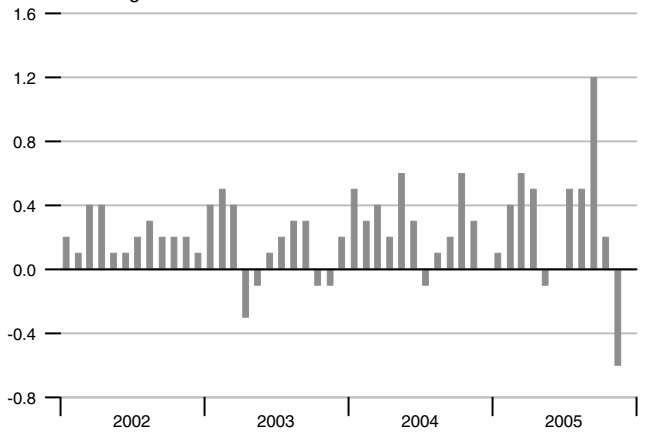
### Real GDP Growth

Compounded annual rates of change



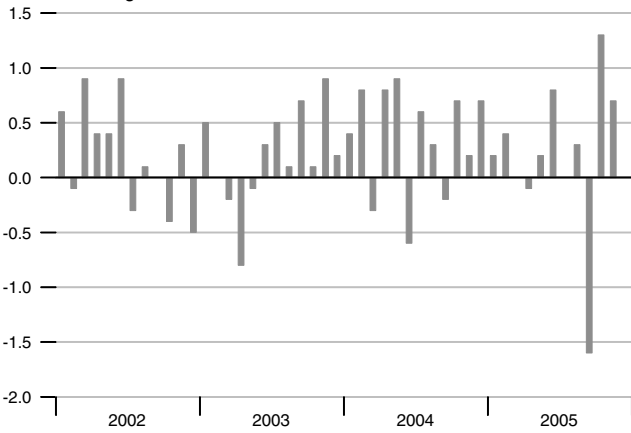
### Consumer Price Index

Percent change



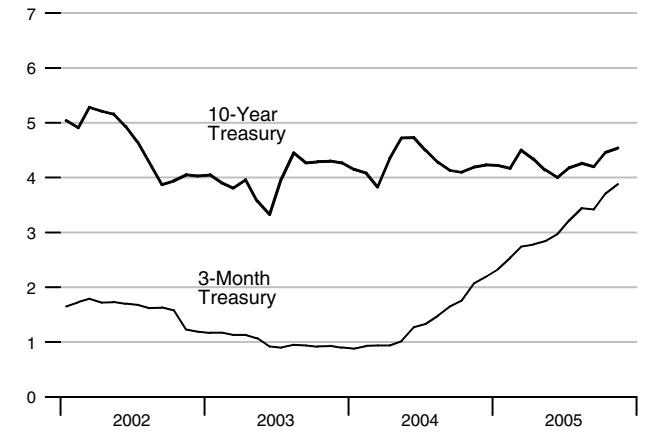
### Industrial Production

Percent change



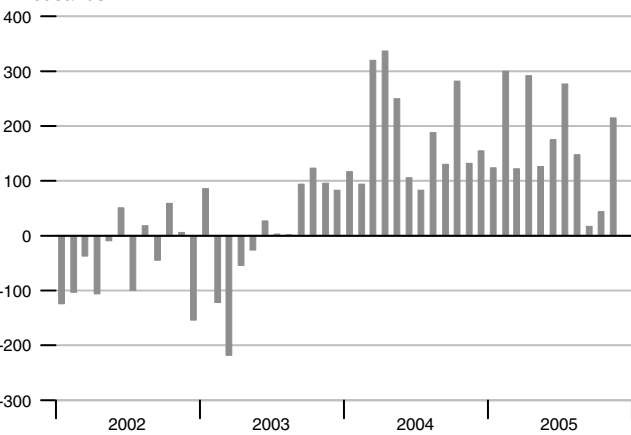
### Interest Rates

Percent



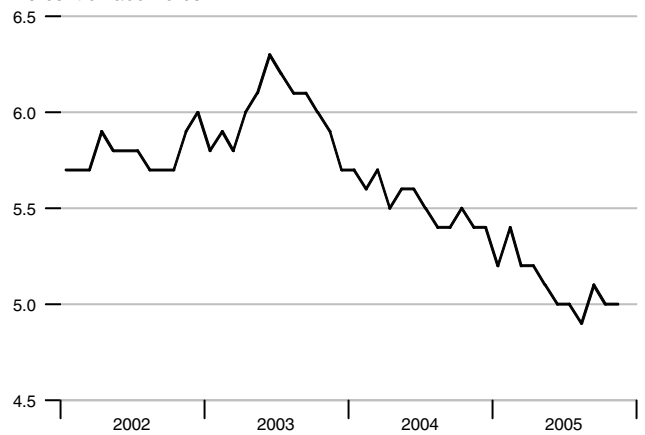
### Change in Nonfarm Payrolls

Thousands



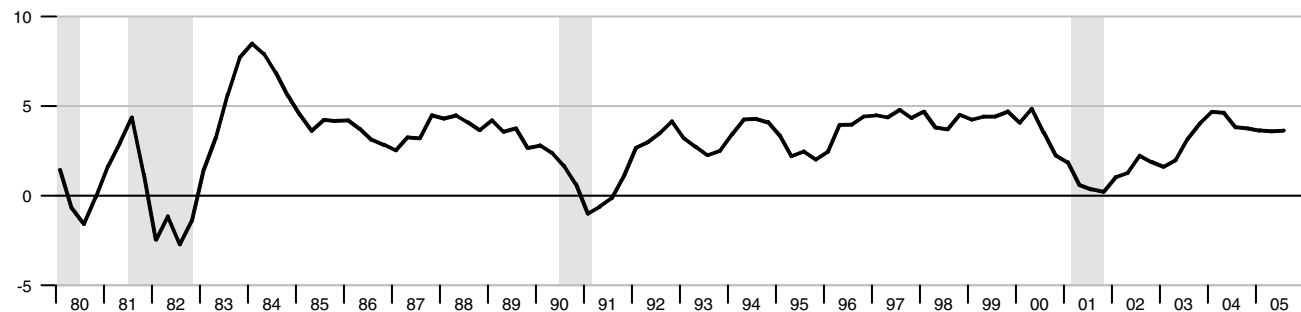
### Unemployment Rate

Percent of labor force



### Real Gross Domestic Product

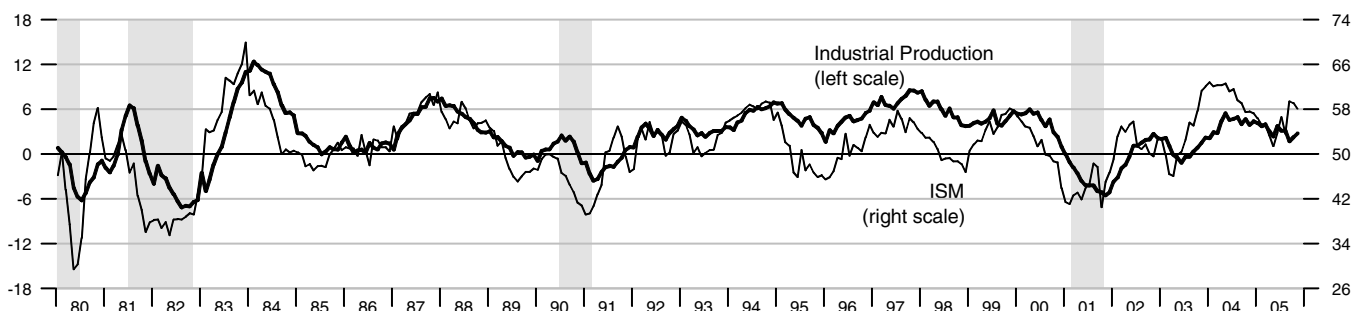
Percent change from year ago



### Industrial Production and Institute for Supply Management (ISM) Indexes

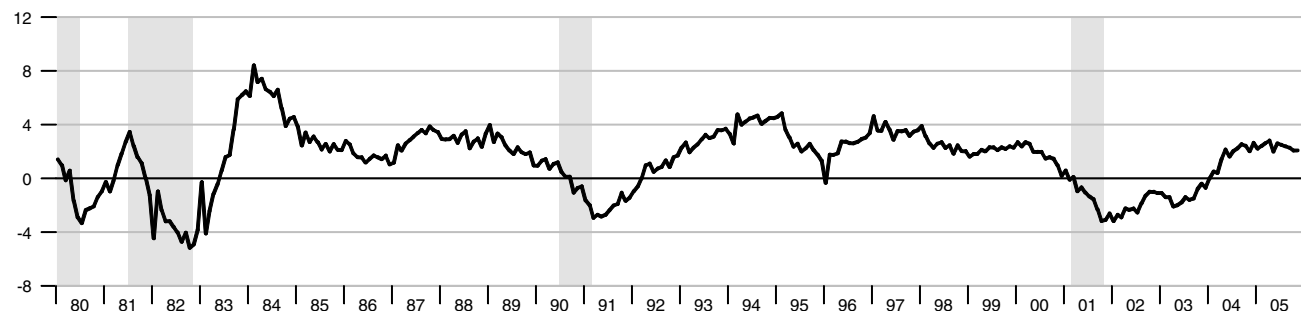
Percent change from year ago

Index



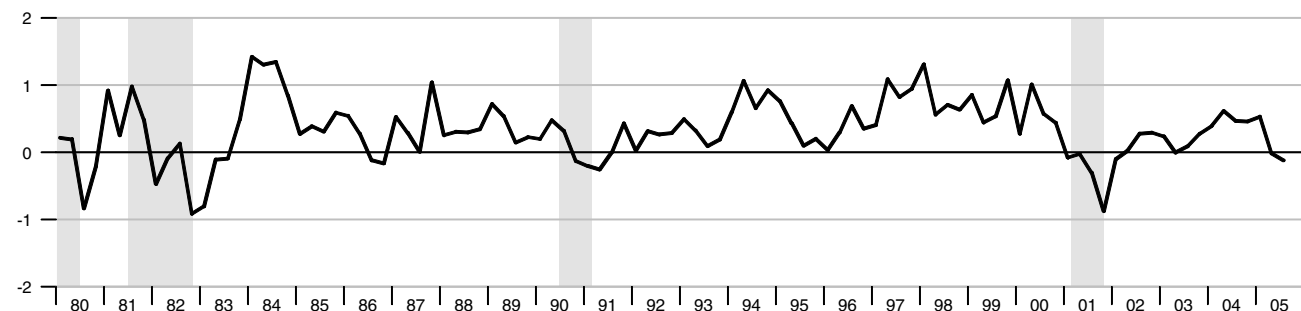
### Aggregate Private Nonfarm Hours

Percent change from year ago

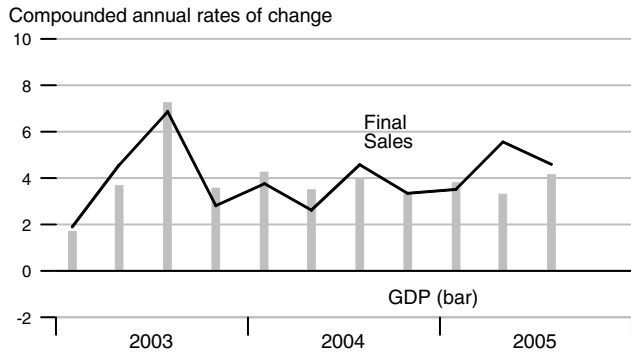


### Real Change in Private Inventories

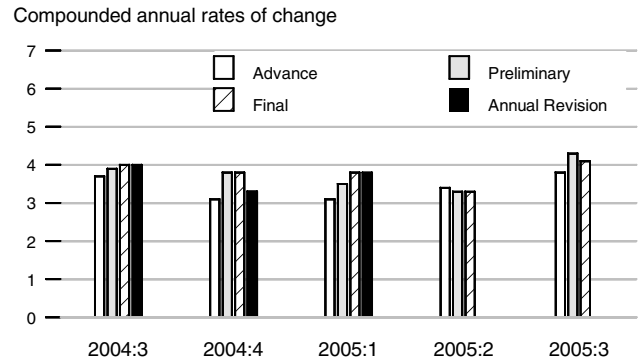
Percent of GDP



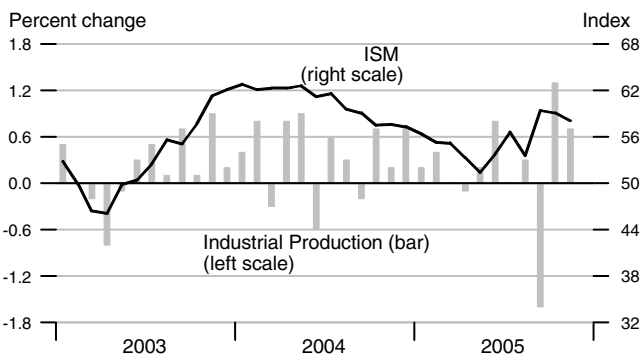
### Real Final Sales and GDP



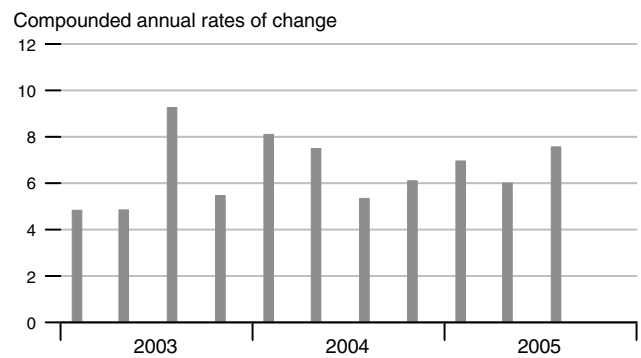
### Real GDP Revisions



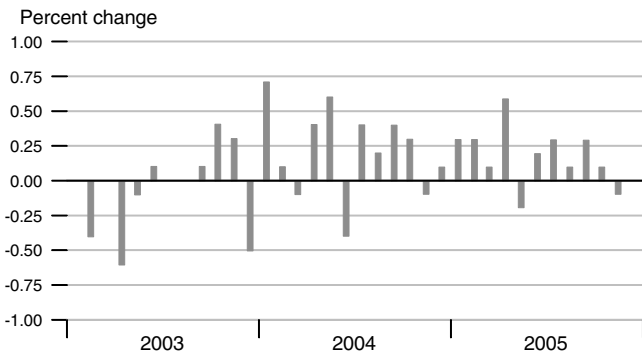
### Industrial Production and ISM Index



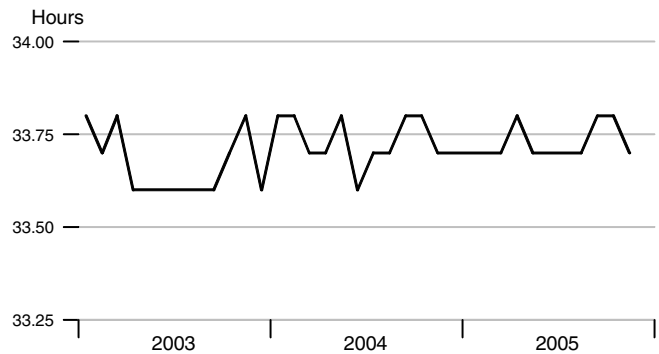
### Nominal Gross Domestic Product



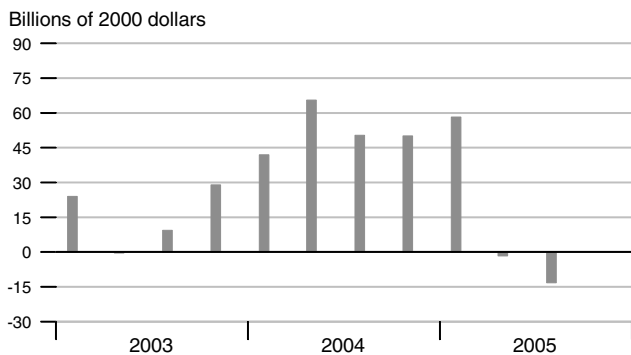
### Aggregate Private Nonfarm Hours



### Average Weekly Private Nonfarm Hours



### Real Change in Private Inventories

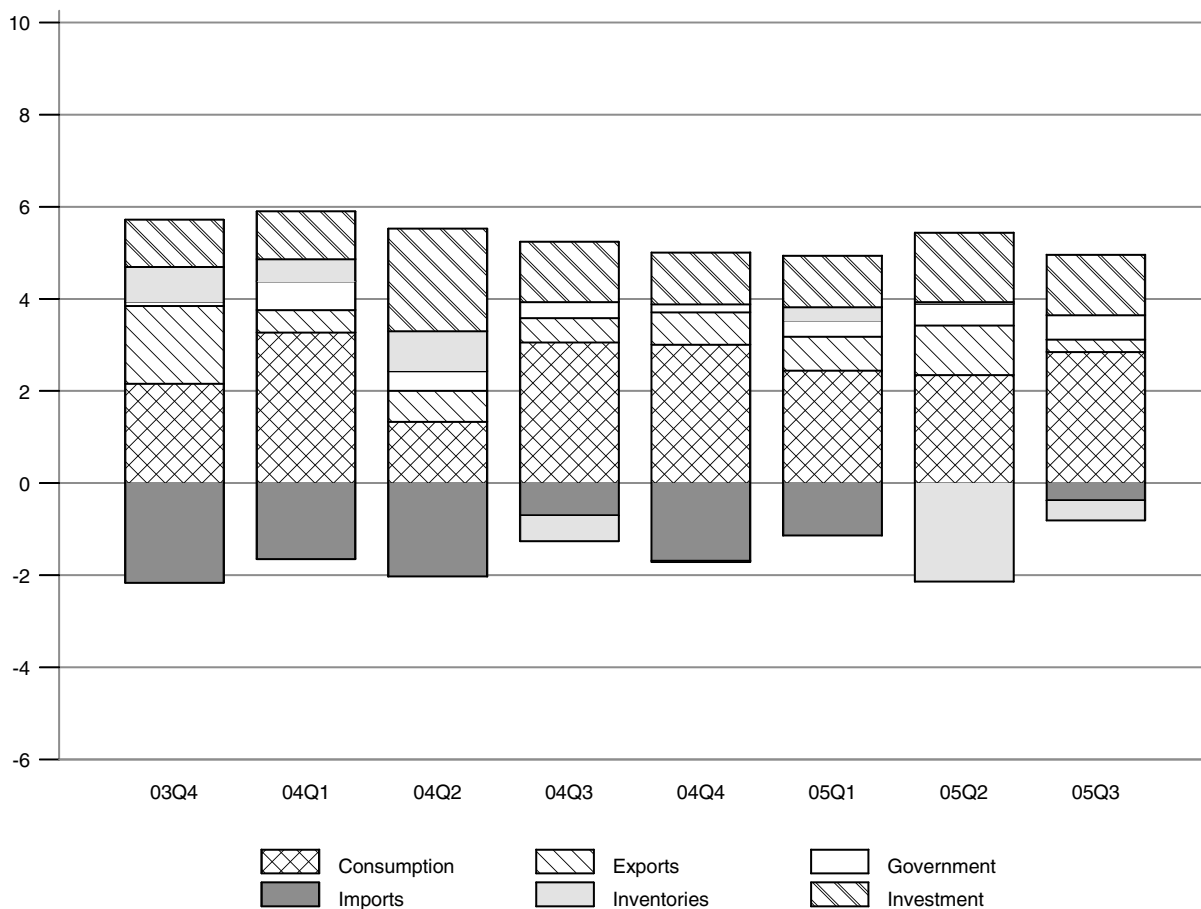


### Inventory-Sales Ratio



### Contribution of Components to Real GDP Growth

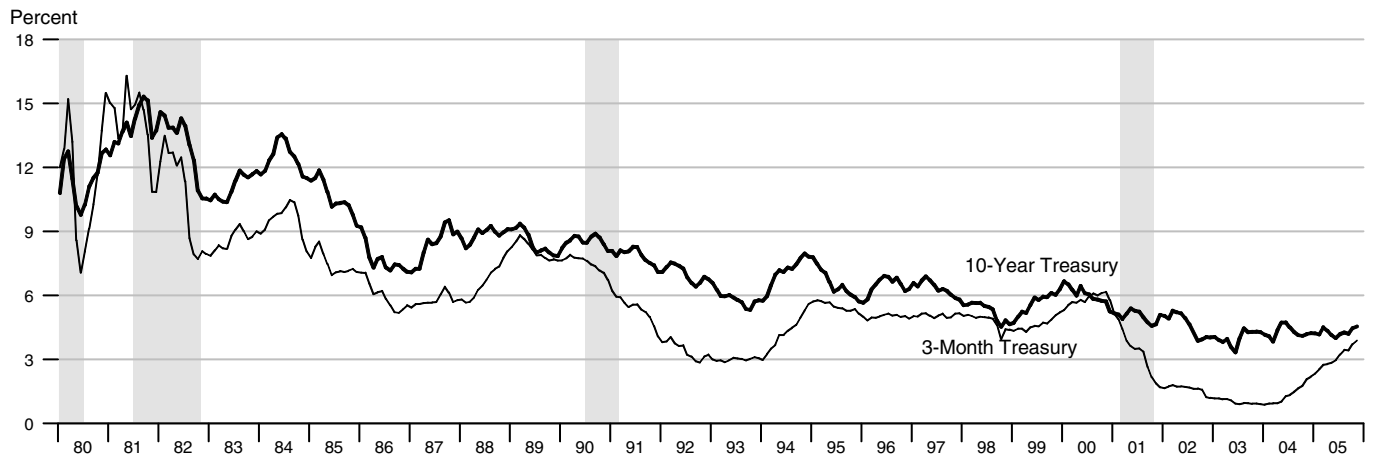
Percentage points at compounded annual rates



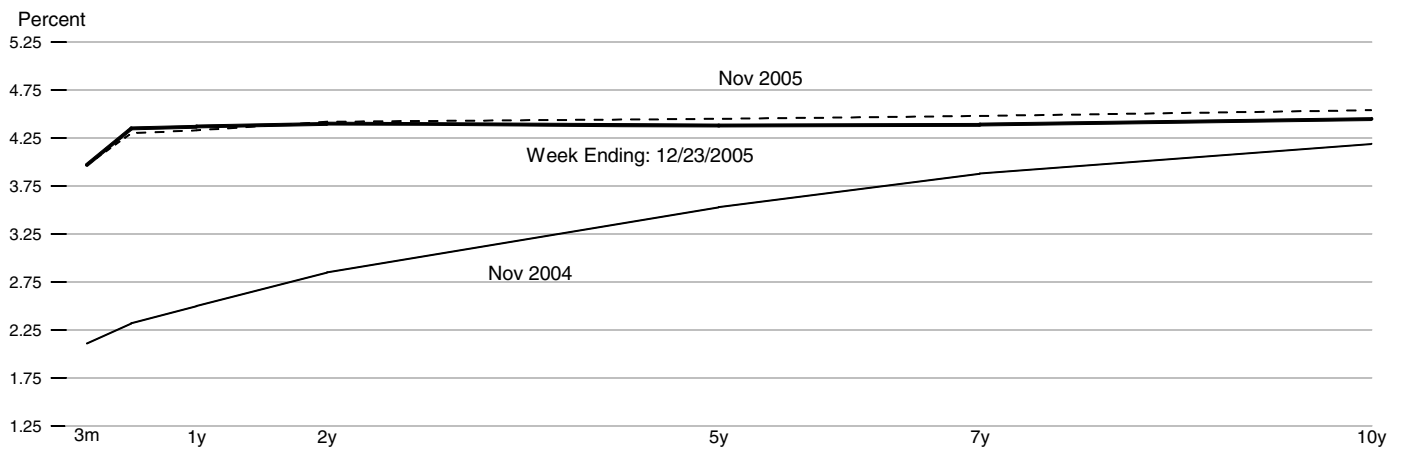
### Contributions to Real GDP Growth Rate

	2003	2004				2005		
	4th	1st	2nd	3rd	4th	1st	2nd	3rd
<b>Final Sales</b>	2.82	3.77	2.63	4.53	3.33	3.51	5.45	4.57
<b>Consumption</b>	2.15	3.27	1.33	3.05	3.01	2.44	2.35	2.85
<b>Fixed Investment</b>	1.03	1.04	2.22	1.31	1.13	1.12	1.51	1.31
Nonresidential	0.43	0.76	1.29	1.15	1.04	0.58	0.90	0.88
Residential	0.59	0.28	0.93	0.15	0.09	0.54	0.62	0.43
<b>Government</b>	0.10	0.62	0.43	0.35	0.17	0.35	0.47	0.54
Federal	0.21	0.71	0.22	0.25	-0.04	0.17	0.17	0.52
State and Local	-0.11	-0.09	0.21	0.10	0.21	0.19	0.31	0.03
<b>Net Exports</b>	-0.47	-1.16	-1.37	-0.17	-0.98	-0.40	1.11	-0.12
Exports	1.69	0.49	0.67	0.53	0.70	0.74	1.07	0.26
Imports	-2.16	-1.65	-2.03	-0.70	-1.68	-1.14	0.04	-0.38
<b>Change in Inventory</b>	0.75	0.48	0.87	-0.56	-0.03	0.29	-2.14	-0.43
<b>Residual</b>	0.05	0.04	0.05	-0.07	-0.08	0.00	-0.01	-0.05
<b>Real GDP Growth</b>	3.57	4.25	3.50	3.97	3.30	3.80	3.31	4.14

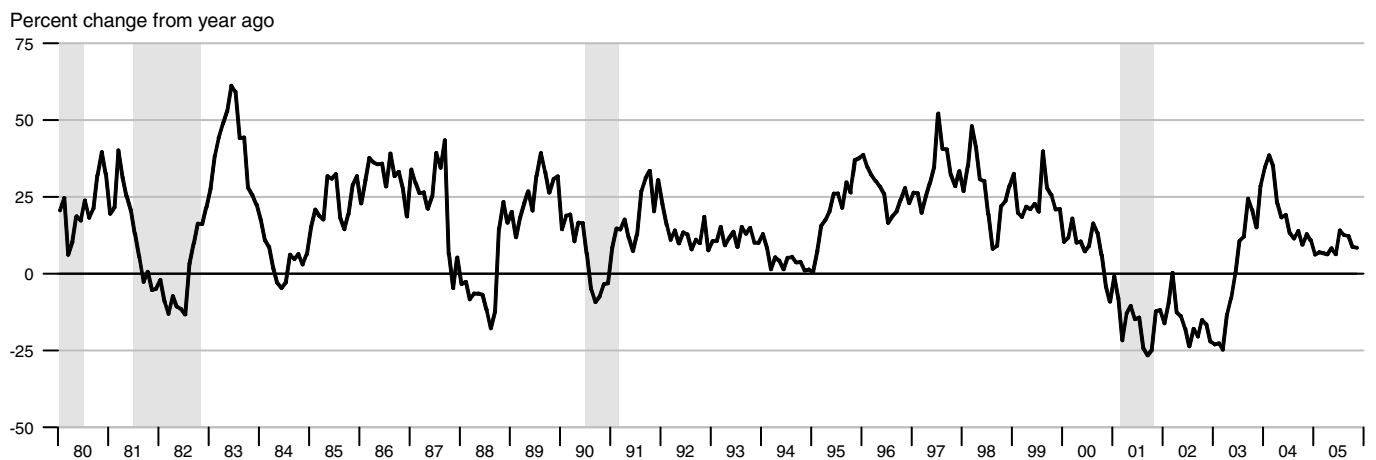
### Interest Rates



### Treasury Yield Curve

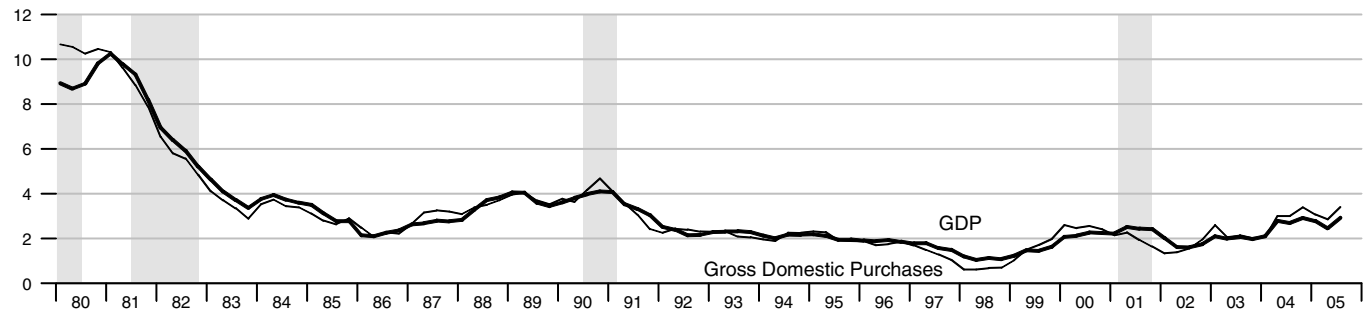


### Standard and Poor's 500 Index with Reinvested Dividends



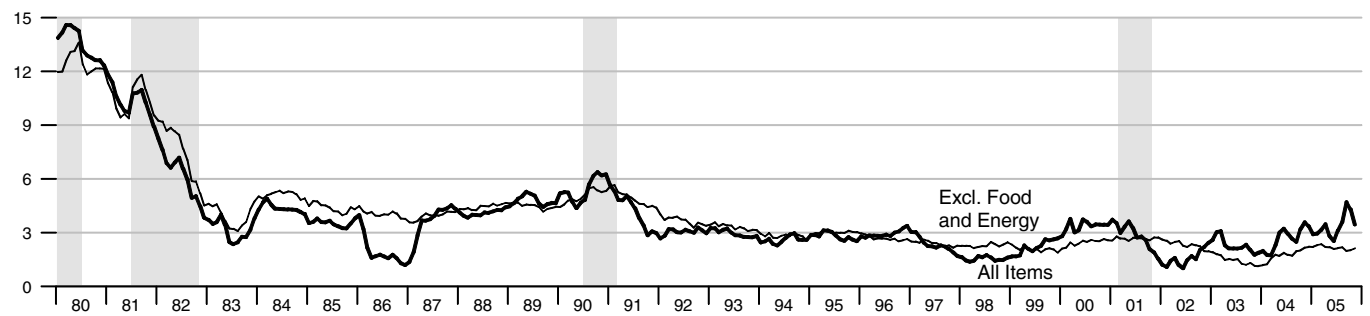
### NIPA Chain Price Indexes

Percent change from year ago



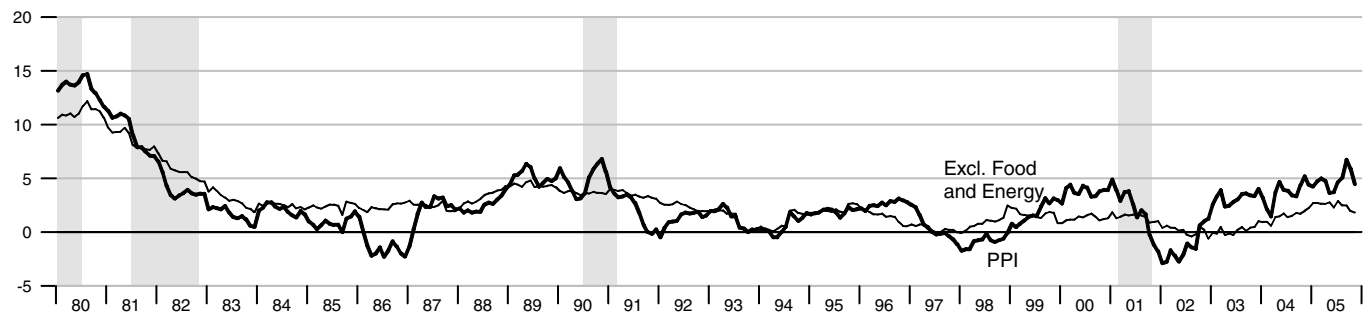
### Consumer Price Index

Percent change from year ago



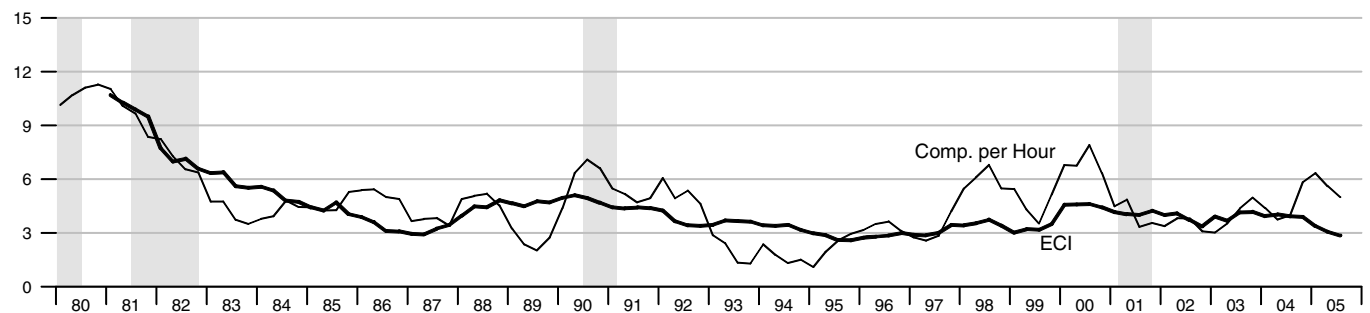
### Producer Price Index, Finished Goods

Percent change from year ago

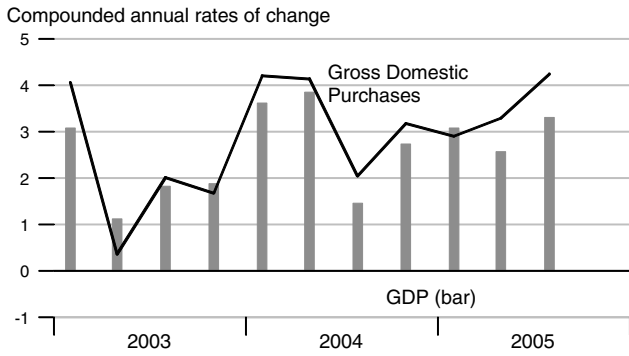


### Employment Cost Index and Compensation per Hour

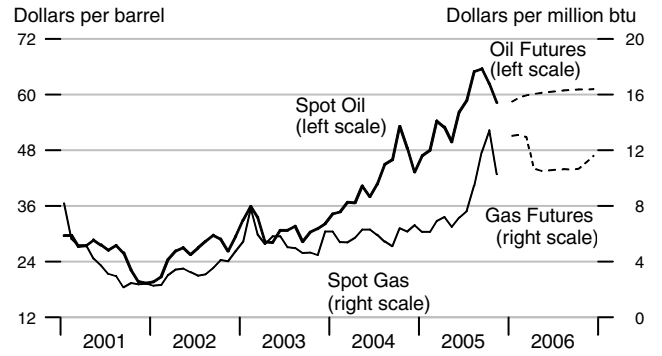
Percent change from year ago



### NIPA Chain Price Indexes

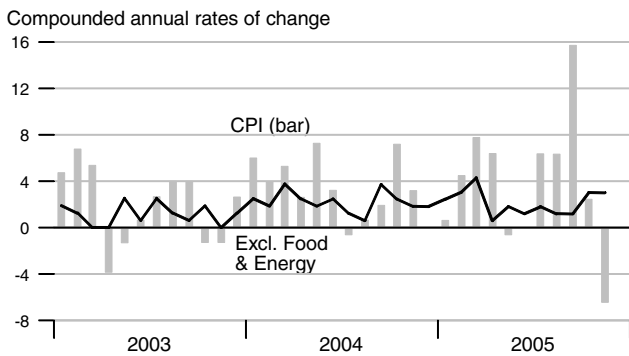


### Oil & Natural Gas Prices: Spot & Futures

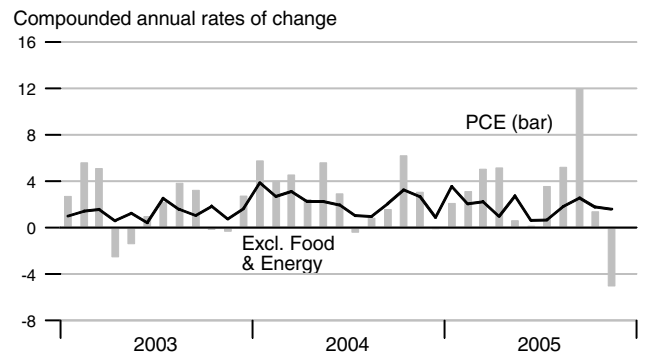


Note: Futures prices as of 12/01/2005.

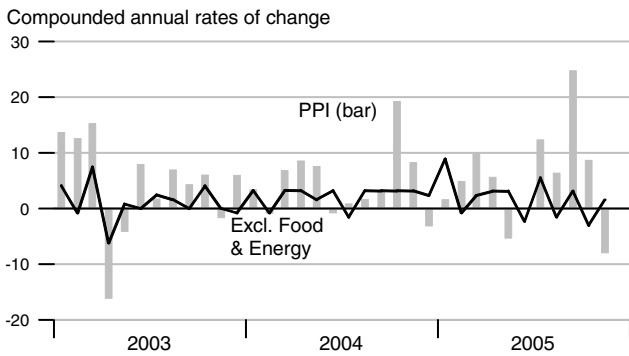
### Consumer Price Index



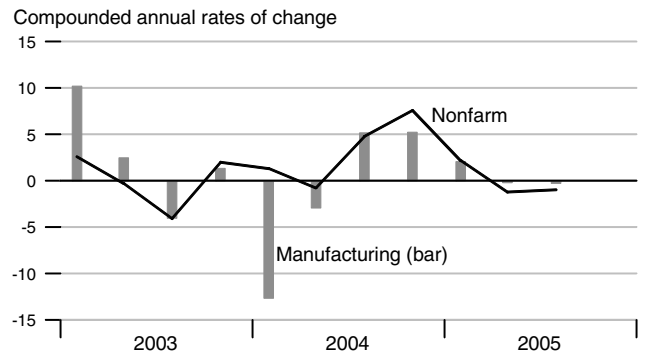
### Consumption Chain Price Index



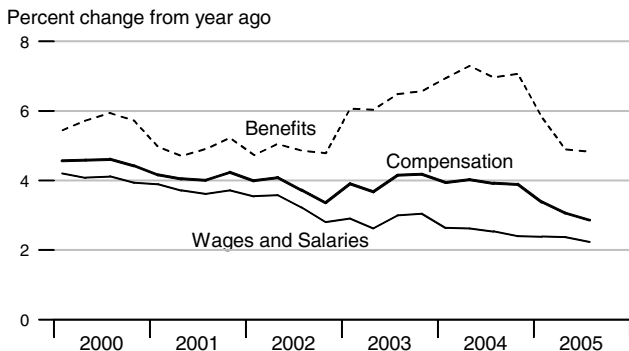
### Producer Price Index, Finished Goods



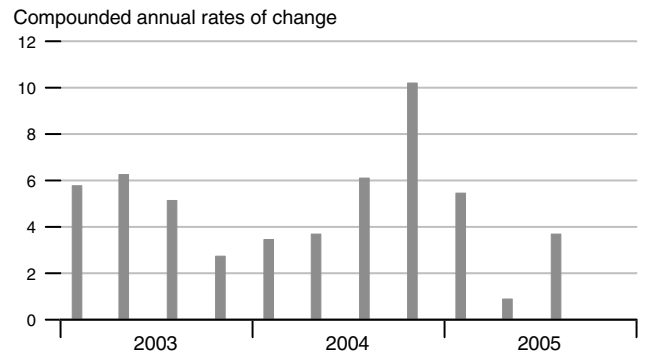
### Unit Labor Cost



### Employment Cost Index

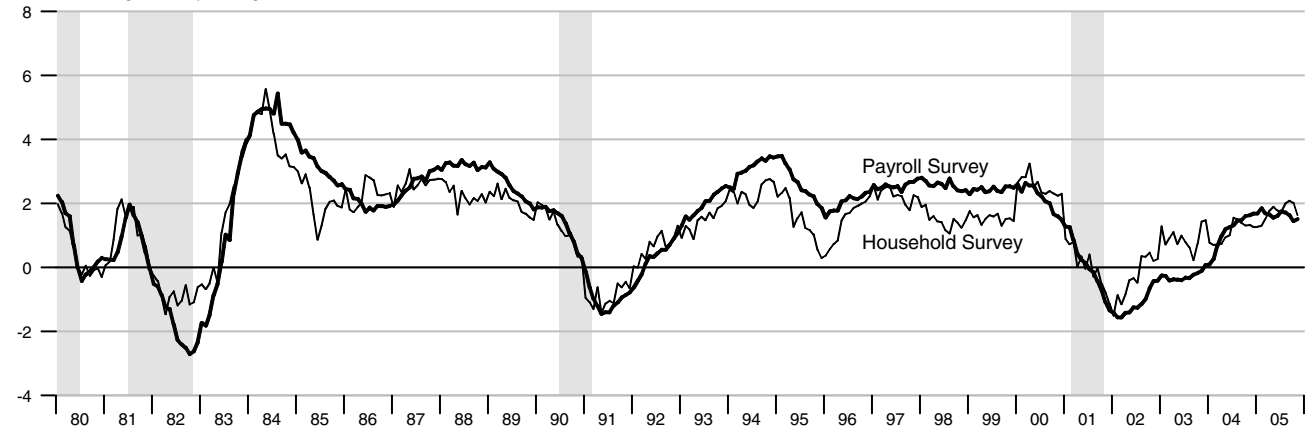


### Compensation per Hour



### Employment

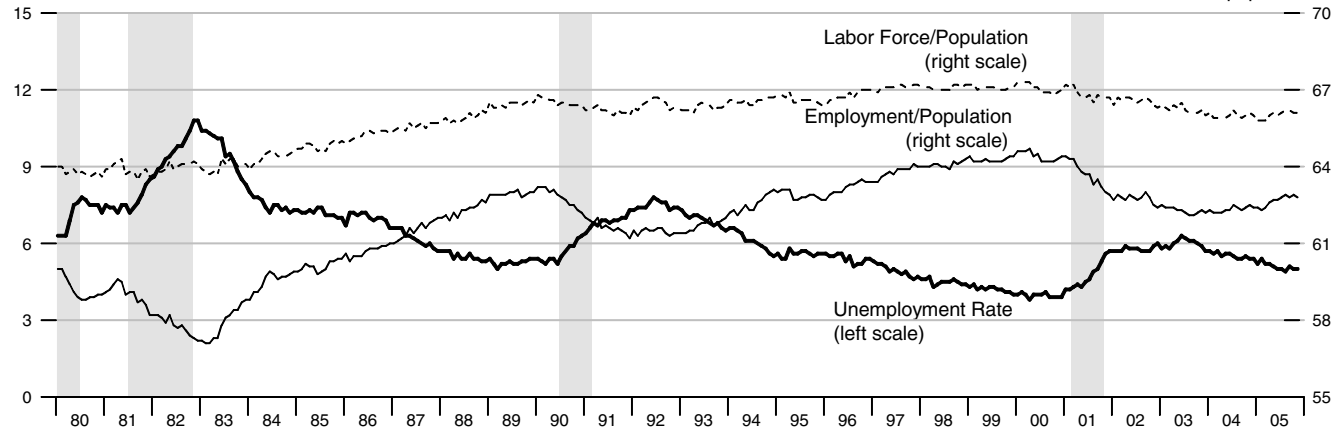
Percent change from year ago



### Unemployment, Labor Force Participation, and Employment Rates

Percent of labor force

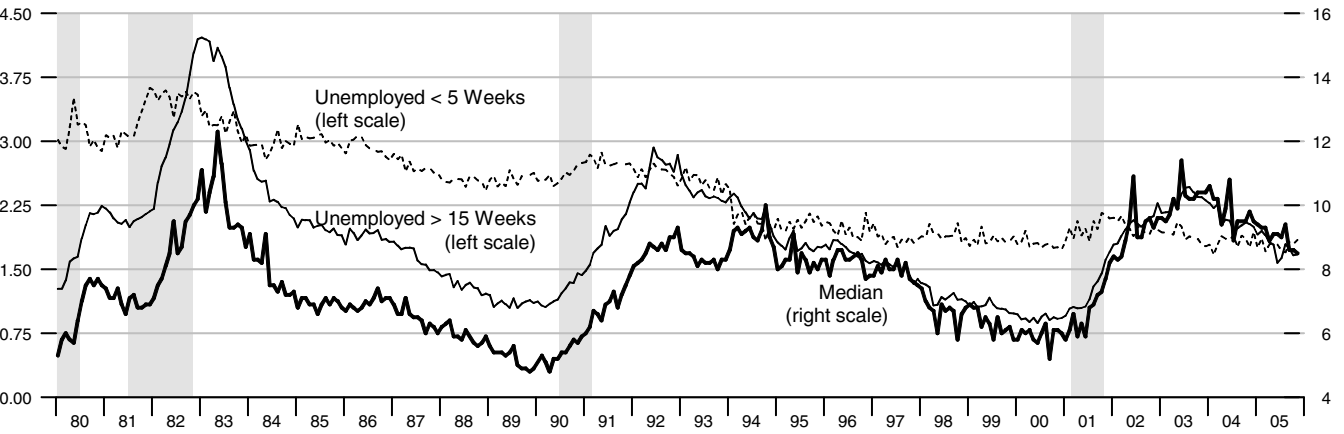
Percent of population



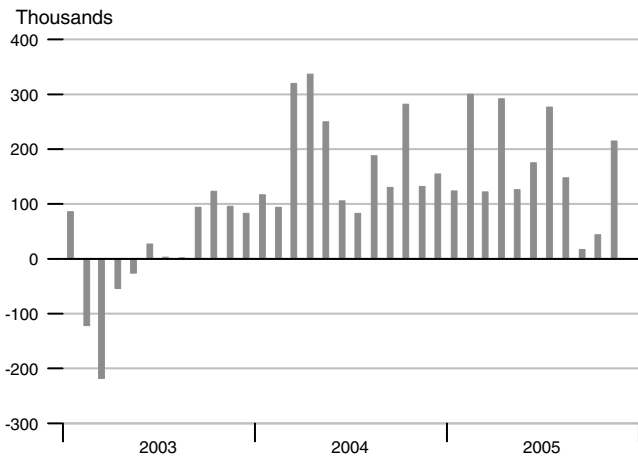
### Duration of Unemployment

Percent of labor force

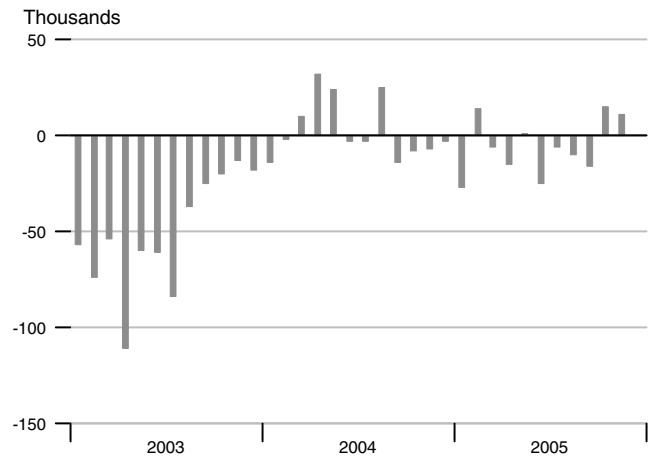
Weeks



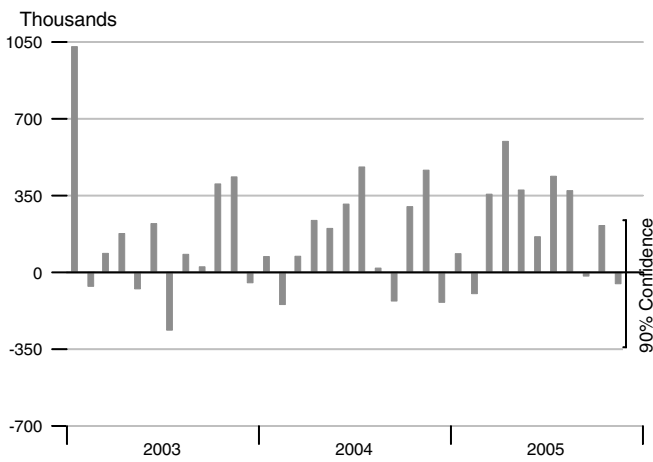
### Change in Nonfarm Payrolls



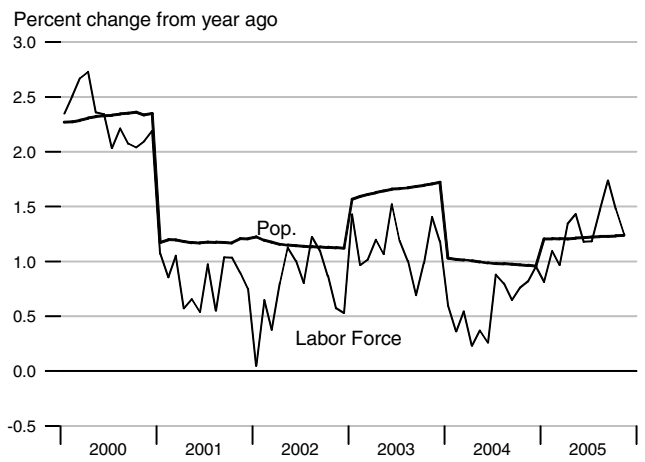
### Change in Manufacturing Payrolls



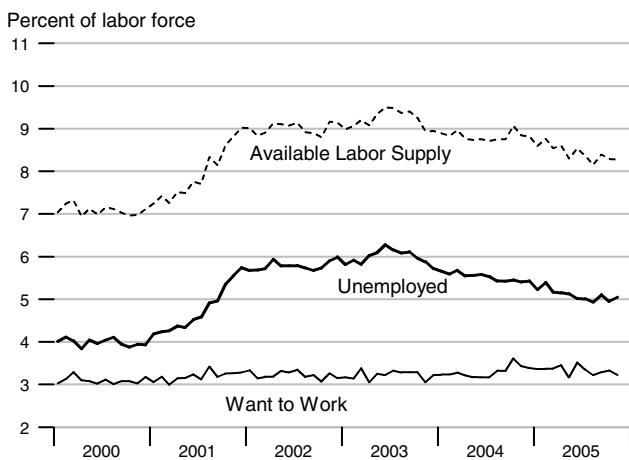
### Change in Household Employment



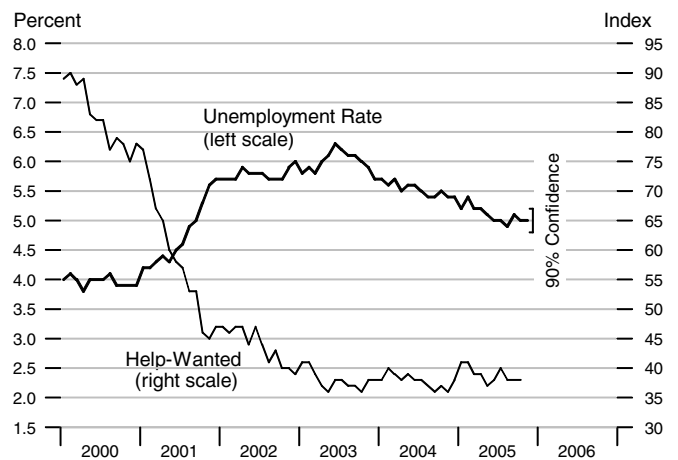
### Labor Force and Population



### Available Labor Supply and Components

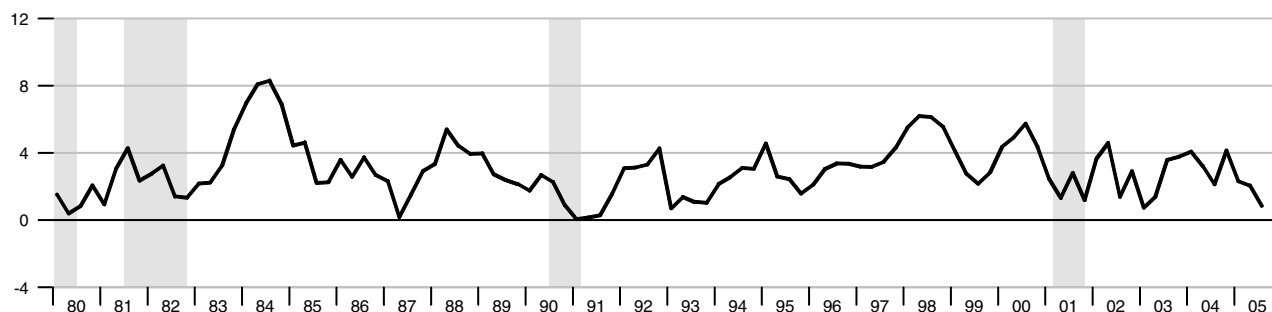


### Unemployment Rate & Help-Wanted Index



### Real Disposable Personal Income

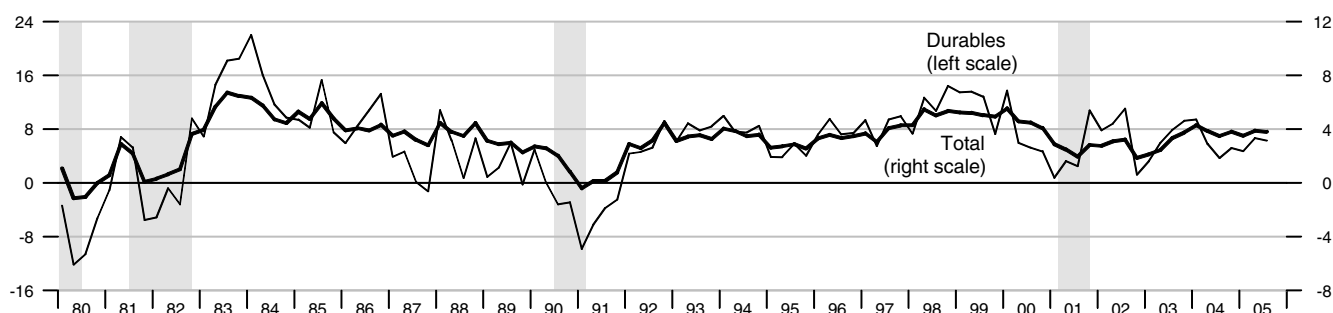
Percent change from year ago, quarterly data



### Real Consumption

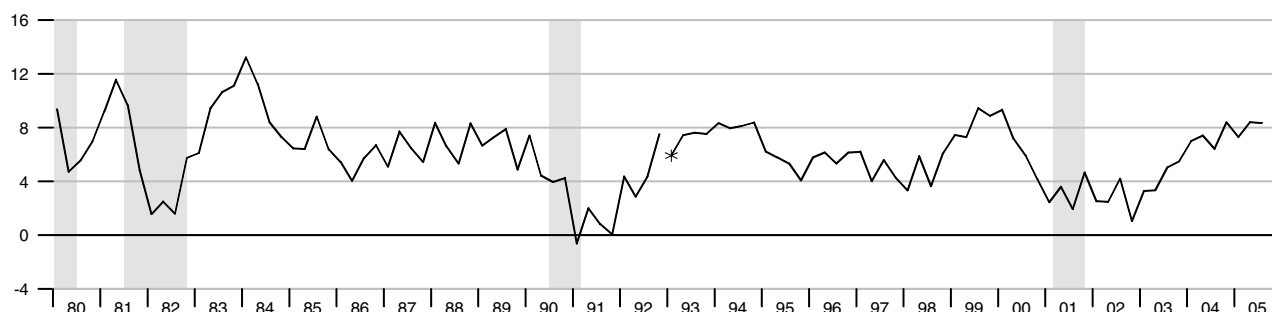
Percent change from year ago, quarterly data

Percent change from year ago, quarterly data



### Retail and Food Services Sales

Percent change from year ago, quarterly average

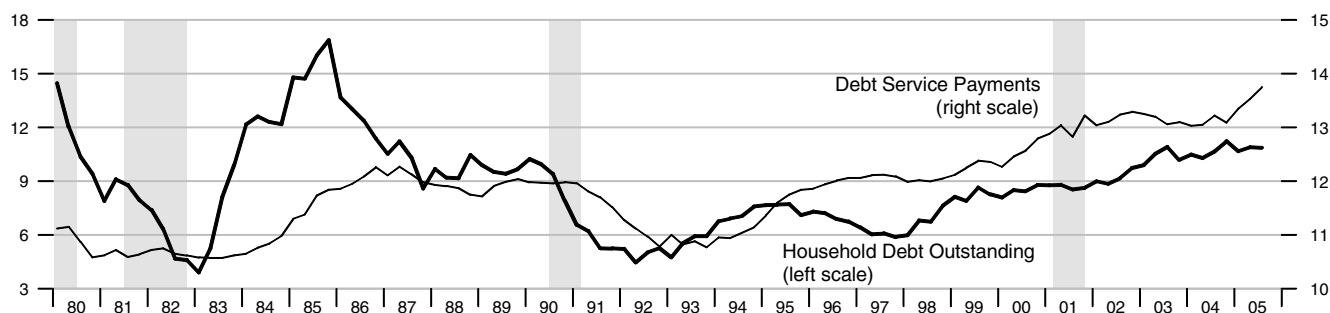


\*Data from Jan. 1992 to the present are on a NAICS basis; data prior to Jan. 1992 are on an SIC basis and are not strictly comparable (see End Note).

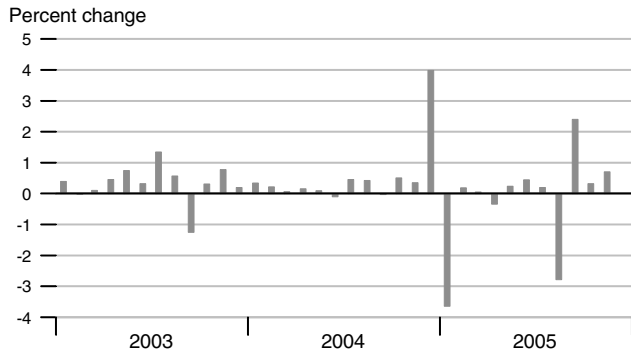
### Debt Service Payments and Household Debt Outstanding

Percent change from year ago, quarterly data

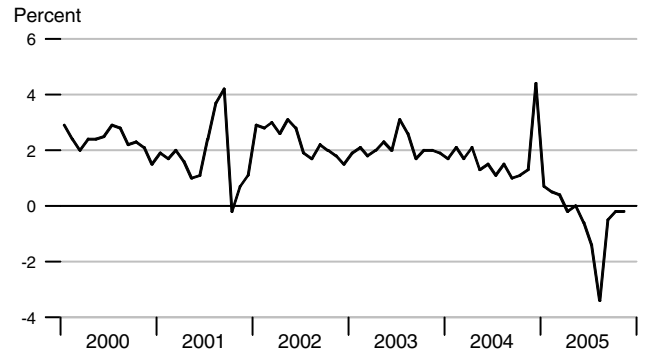
Percent of disposable personal income



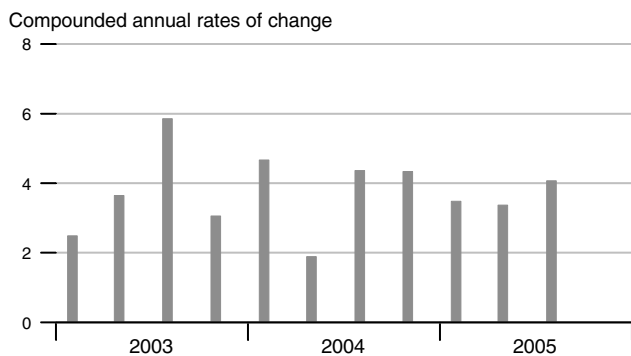
### Real Disposable Personal Income



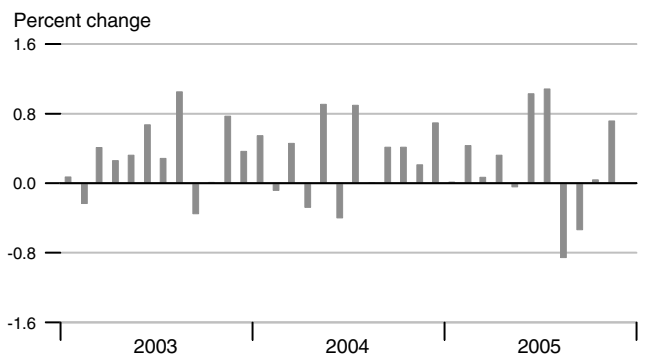
### Personal Saving Rate



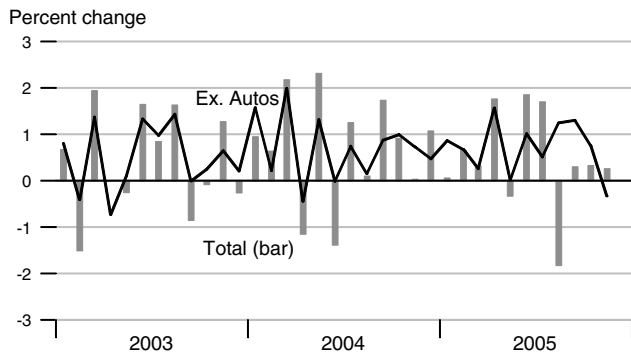
### Real Consumption



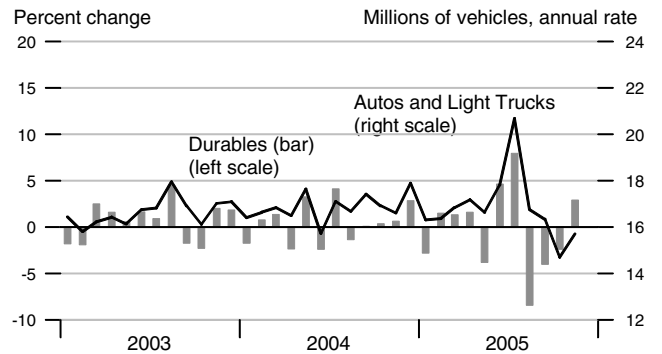
### Real Consumption



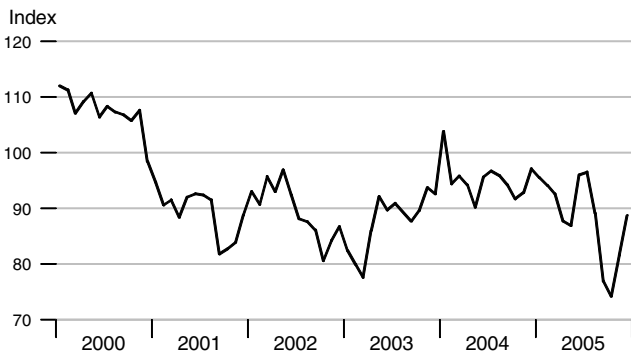
### Retail & Food Services



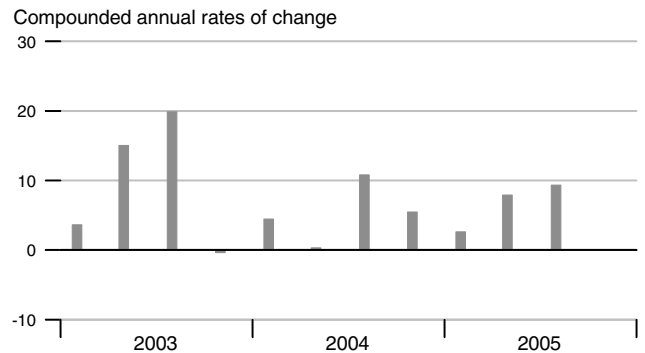
### Real Durables Consumption & Vehicle Sales



### Consumer Sentiment (U. of Michigan)

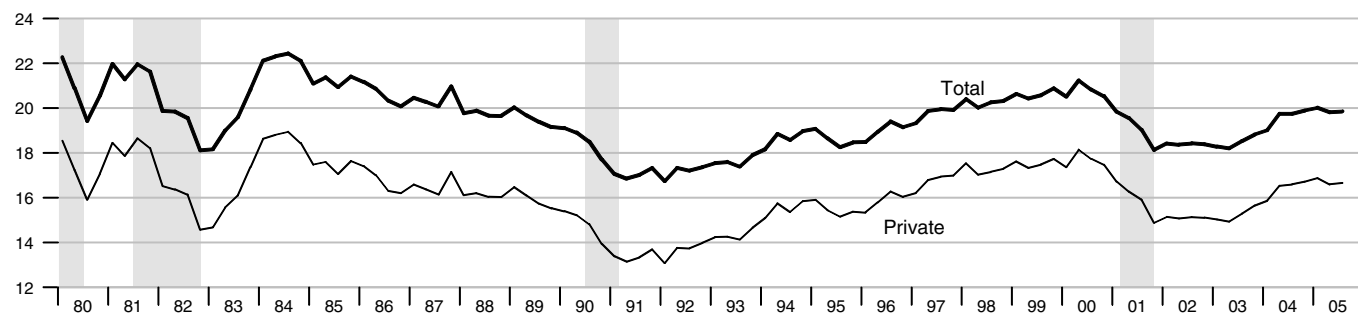


### Real Durables Consumption



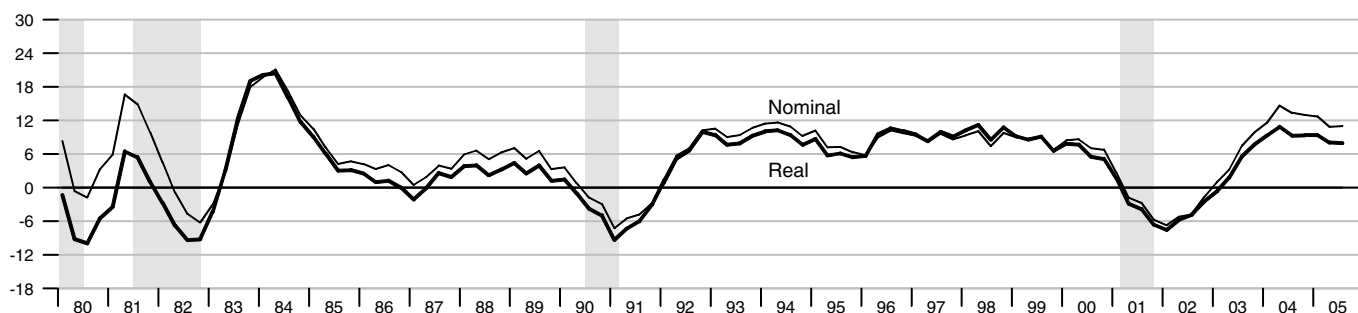
### Investment

Percent of nominal GDP



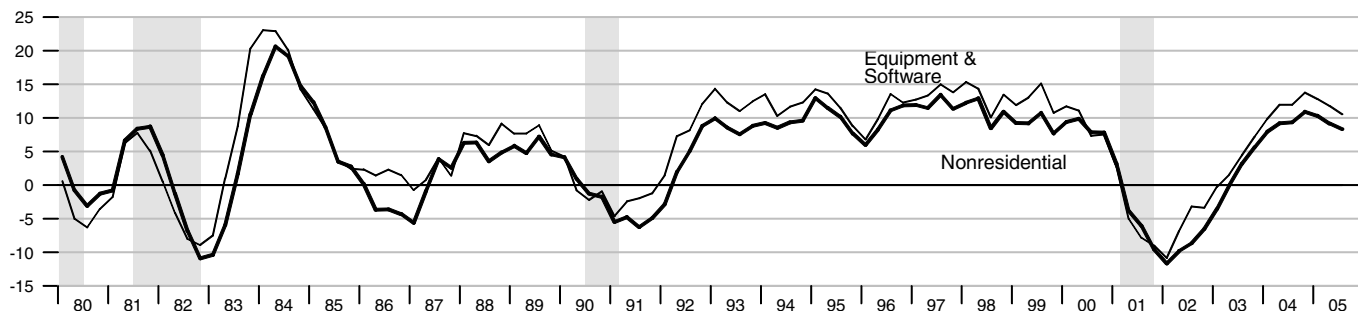
### Private Fixed Investment

Percent change from year ago



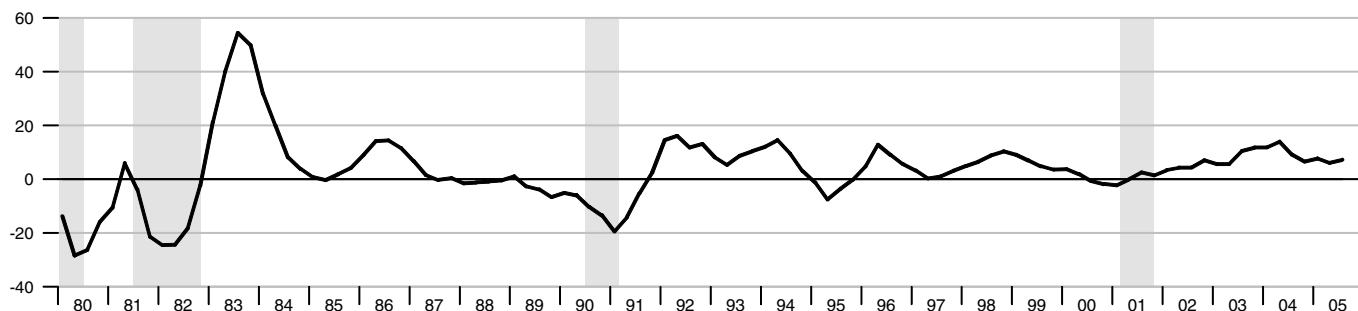
### Real Nonresidential Fixed and Equipment & Software Investment

Percent change from year ago

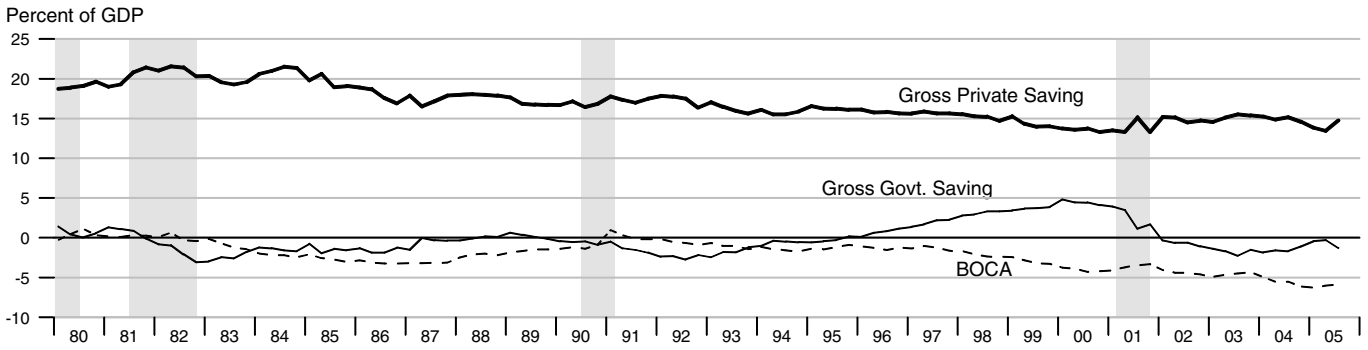


### Real Residential Fixed Investment

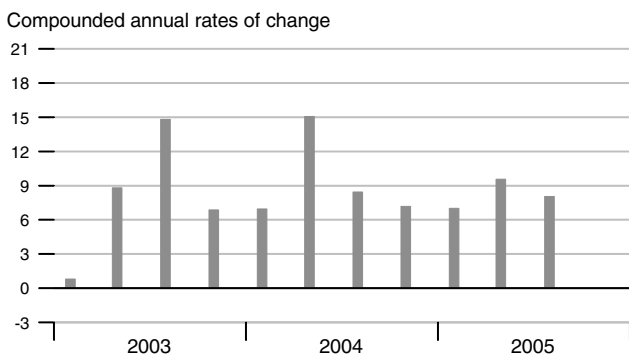
Percent change from year ago



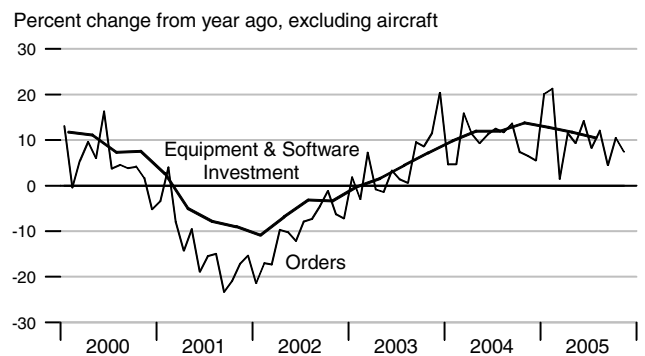
### Gross Saving Rates and Balance on Current Account (NIPA)



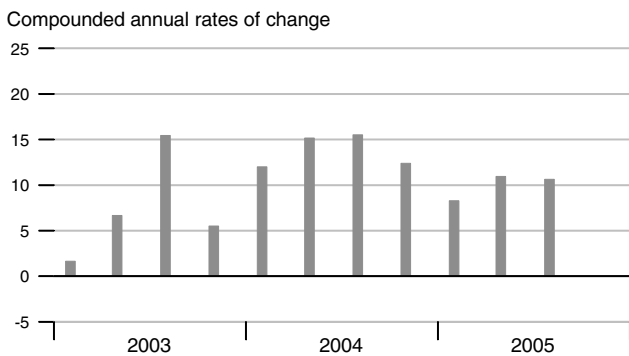
### Real Private Fixed Investment



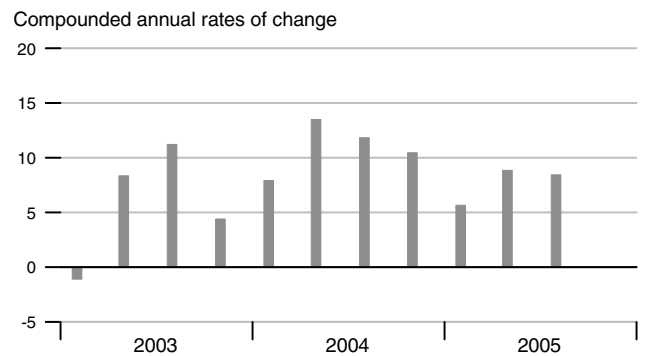
### Nondefense Capital Goods Orders



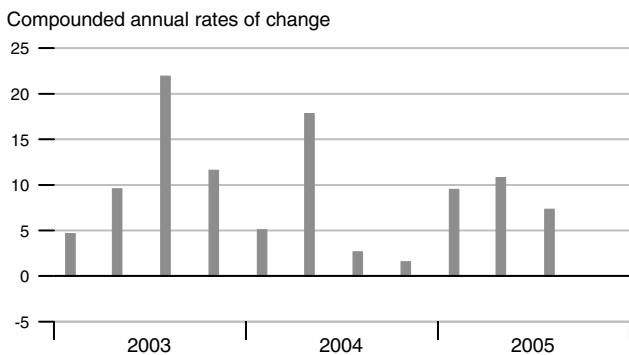
### Real Equipment & Software Investment



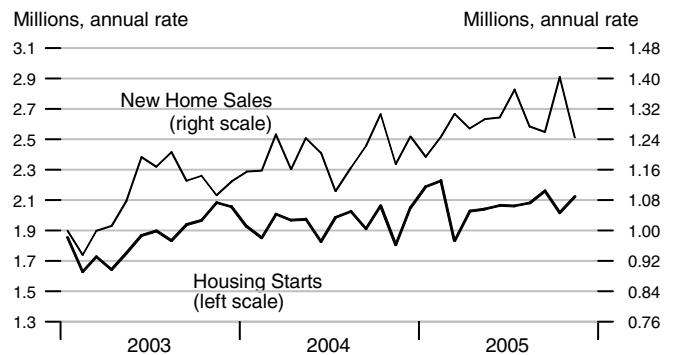
### Real Nonresidential Fixed Investment



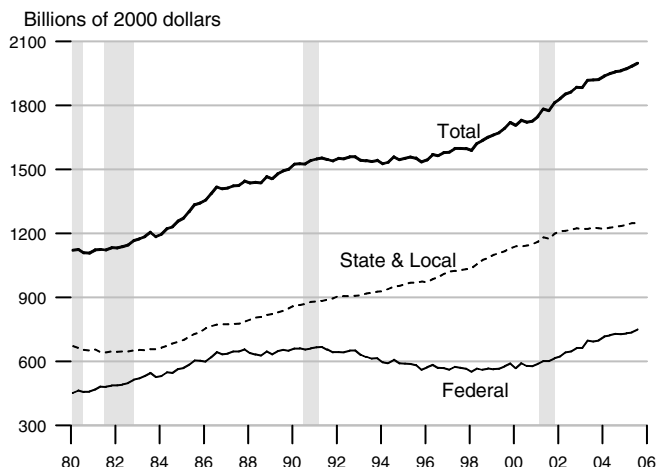
### Real Residential Fixed Investment



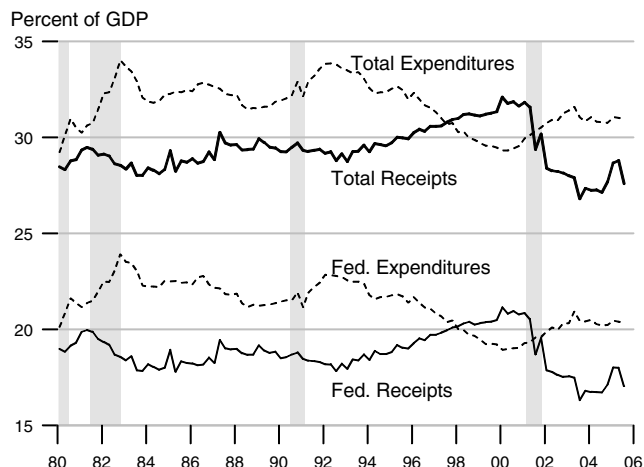
### Housing Starts and New Home Sales



Govt. Consumption and Investment



Govt. Current Receipts and Expenditures



Government Budgets

Billions of dollars

National Income Accounts

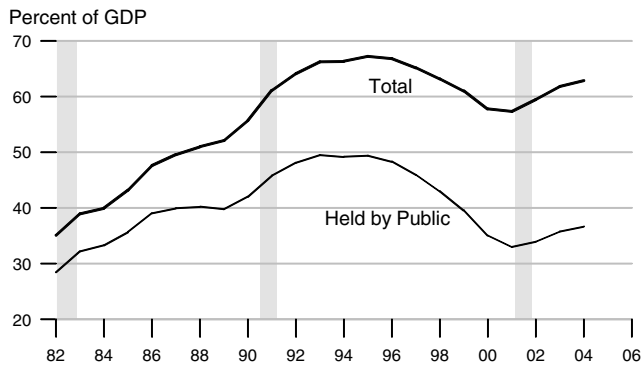
Calendar Years

Unified Budget

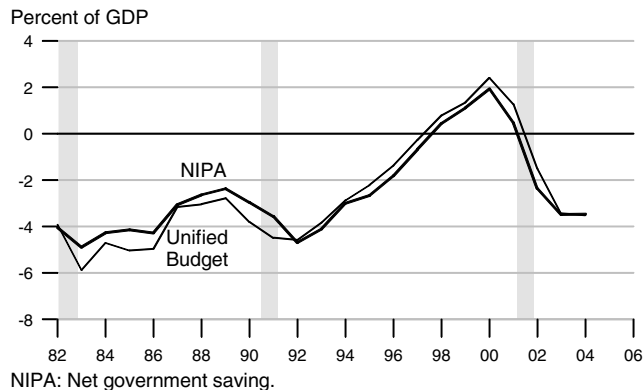
Fiscal Years

	State and Local			Federal			Federal		
	Receipts	Expenditures	Surplus or Deficit (-)	Receipts	Expenditures	Surplus or Deficit (-)	Receipts	Outlays	Surplus or Deficit (-)
1991	789.2	793.3	-4.1	1101.3	1315.0	-213.7	1055.0	1324.3	-269.3
1992	845.7	845.0	0.7	1147.2	1444.6	-297.4	1091.3	1381.6	-290.3
1993	886.9	886.0	0.9	1222.5	1496.0	-273.5	1154.4	1409.5	-255.1
1994	942.9	932.4	10.5	1320.8	1533.1	-212.3	1258.6	1461.9	-203.2
1995	990.2	978.2	12.0	1406.5	1603.5	-197.0	1351.8	1515.8	-164.0
1996	1043.3	1017.5	25.8	1524.0	1665.8	-141.8	1453.1	1560.5	-107.5
1997	1097.4	1058.3	39.1	1653.1	1708.9	-55.8	1579.3	1601.2	-21.9
1998	1163.2	1111.2	52.0	1773.8	1734.9	38.9	1721.8	1652.6	69.2
1999	1236.7	1186.3	50.4	1891.2	1787.6	103.6	1827.5	1701.9	125.5
2000	1319.5	1269.5	50.0	2053.8	1864.4	189.4	2025.2	1789.1	236.2
2001	1373.0	1368.2	4.8	2016.2	1969.5	46.7	1991.2	1863.0	128.2
2002	1410.1	1444.3	-34.2	1853.2	2101.1	-247.9	1853.2	2011.0	-157.8
2003	1488.6	1512.4	-23.8	1868.6	2251.4	-382.8	1782.3	2159.9	-377.6
2004	1581.7	1587.5	-5.8	1974.8	2381.3	-406.5	1880.1	2292.2	-412.1
2003Q3	1507.6	1521.4	-13.8	1808.9	2265.1	-456.2	429.5	533.8	-104.3
2003Q4	1539.0	1526.5	12.5	1887.9	2292.9	-405.0	440.8	570.9	-130.2
2004Q1	1546.8	1553.2	-6.4	1917.8	2347.2	-429.4	409.6	580.8	-171.2
2004Q2	1579.7	1581.3	-1.6	1951.4	2364.9	-413.5	549.9	575.7	-25.8
2004Q3	1574.5	1593.8	-19.3	1975.4	2387.0	-411.6	479.5	565.2	-85.7
2004Q4	1625.7	1621.7	4.0	2054.6	2426.2	-371.6	487.2	605.2	-118.1
2005Q1	1656.7	1649.4	7.3	2196.6	2494.9	-298.3	451.8	628.4	-176.6
2005Q2	1694.9	1673.7	21.2	2227.9	2525.2	-297.3	665.2	619.9	45.2
2005Q3	1684.3	1690.8	-6.5	2148.5	2563.7	-415.2	549.2	618.2	-69.0

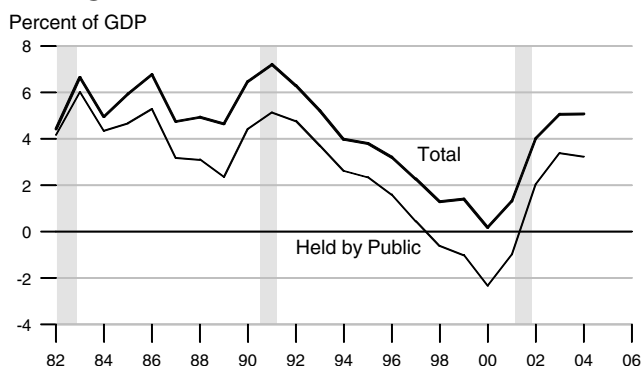
### Federal Debt



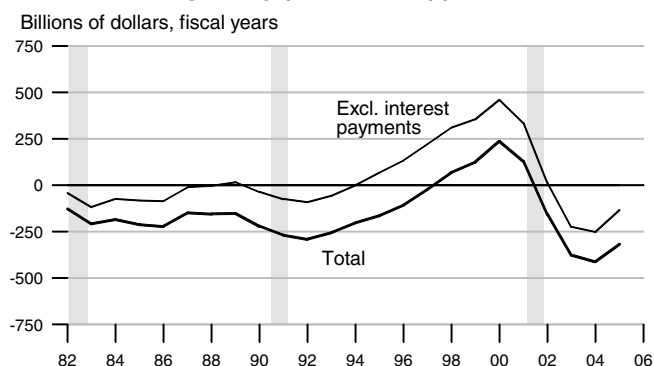
### Federal Surplus (+) / Deficit (-)



### Change in Federal Debt



### Federal Surplus (+) / Deficit (-), Unified Basis

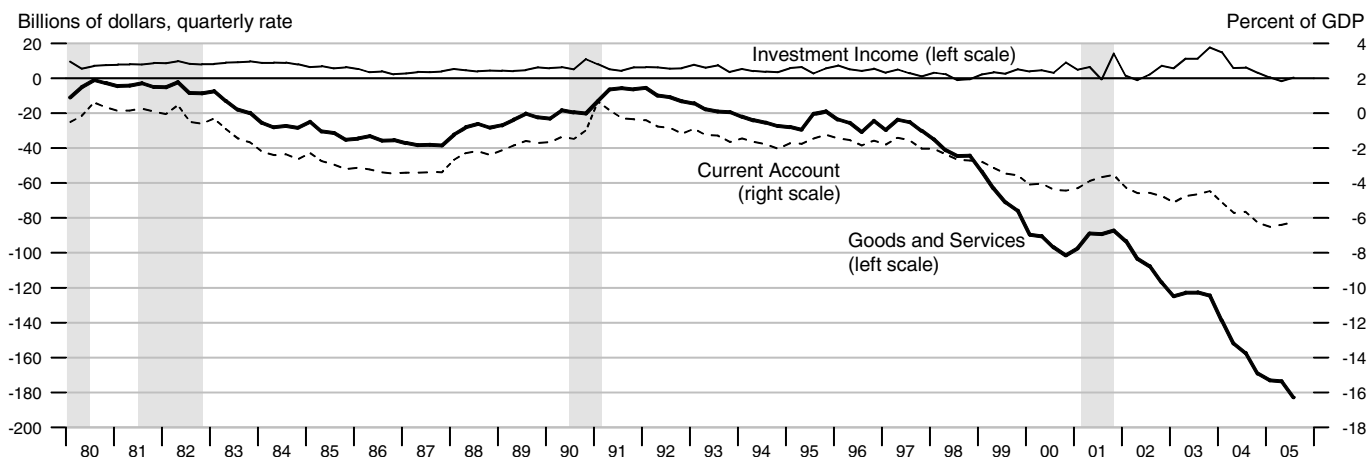


### Federal Government Debt

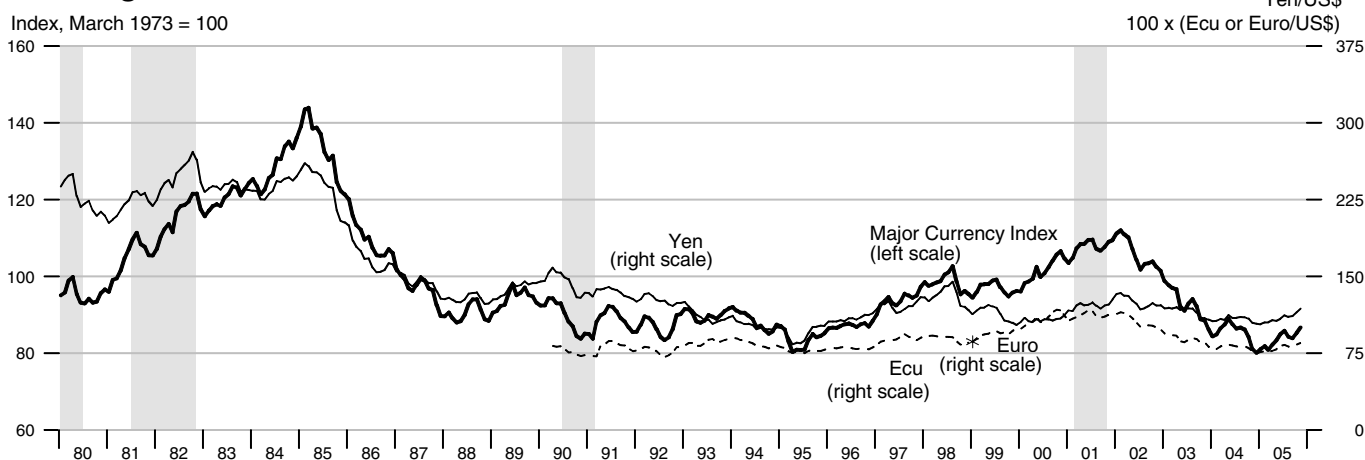
Billions of dollars, end of month or fiscal year  
Excludes Agency-issued debt

	Total Public Debt	Held by Agencies and Trusts	Held by Public		Held by Private Investors	
			Total	Federal Reserve Banks	Total	Foreign and International
2003	6783.2	2859.3	3923.9	656.1	3268.0	1454.2
2004	7379.1	3075.7	4303.4	700.3	3607.0	1836.6
2005	7932.7	3331.1	4601.6	736.4	3864.9	2069.0
2002 March	6006.0	2562.4	3443.7	575.4	2849.2	1067.1
June	6126.5	2662.9	3463.5	590.7	2849.8	1135.4
September	6228.2	2675.7	3552.6	604.2	2924.8	1200.8
December	6405.7	2758.3	3647.4	629.4	3018.5	1246.8
2003 March	6460.8	2750.0	3710.8	641.5	3069.9	1286.3
June	6670.1	2853.8	3816.3	652.1	3164.7	1382.8
September	6783.2	2859.3	3923.9	656.1	3268.0	1454.2
December	6998.0	2954.5	4044.1	666.7	3377.9	1533.0
2004 March	7131.1	2954.4	4176.7	674.1	3502.8	1677.1
June	7274.3	3055.6	4218.7	687.4	3531.5	1777.5
September	7379.1	3075.7	4303.4	700.3	3607.0	1836.6
December	7596.1	3189.8	4406.4	717.8	3667.1	1890.7
2005 March	7776.9	3204.5	4572.4	717.3	3855.4	1983.5
June	7836.5	3308.9	4527.6	724.7	3803.0	2016.2
September	7932.7	3331.1	4601.6	736.4	3864.9	2069.0

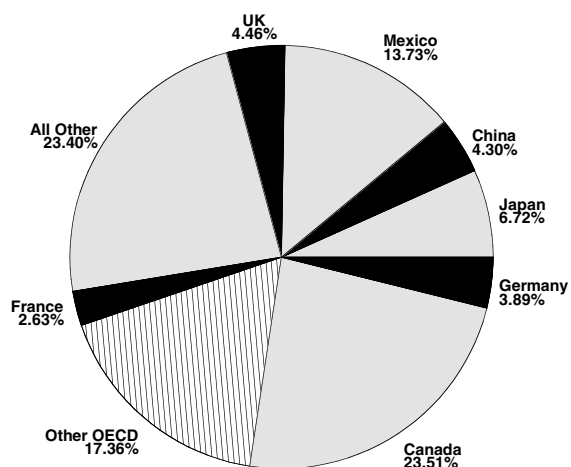
### Current Account, Trade and Investment Income Balances



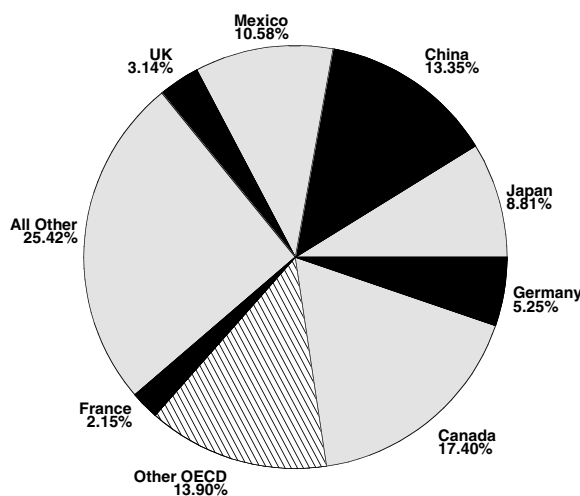
### Exchange Rates



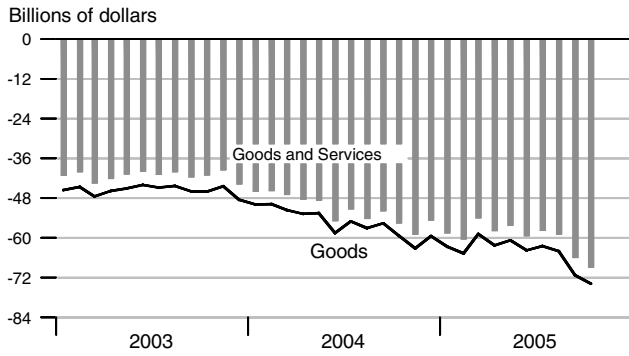
### Goods Export Shares, 2004



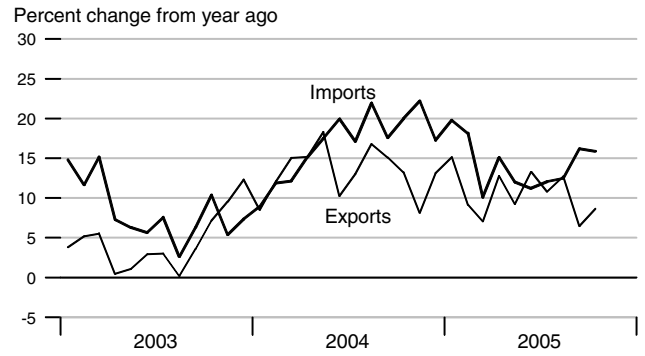
### Goods Import Shares, 2004



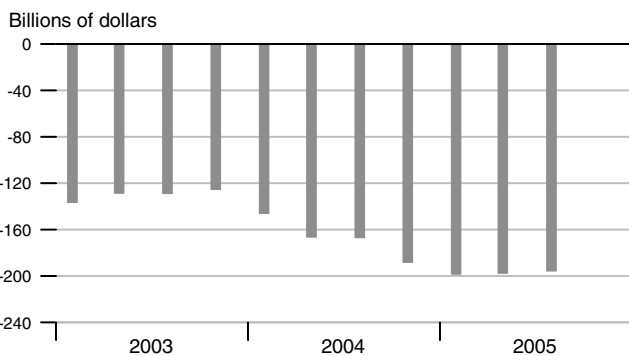
### Trade Balance



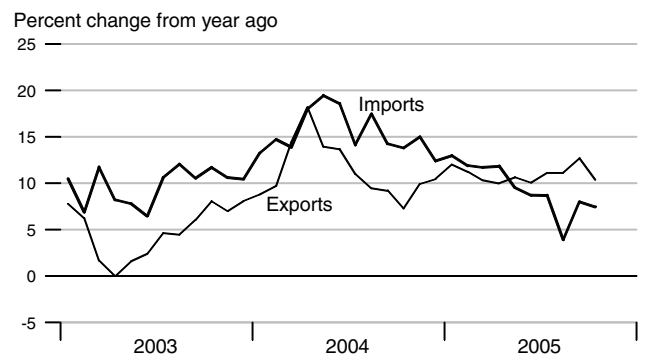
### Goods Trade



### Current Account Balance



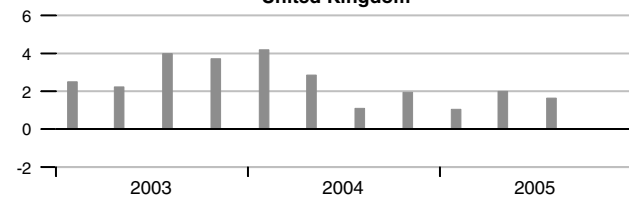
### Services Trade



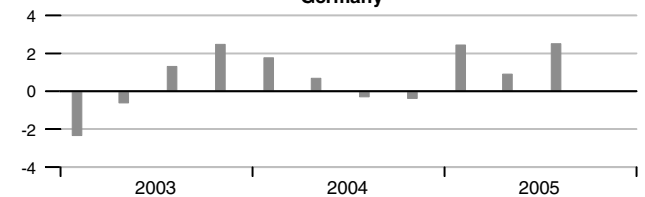
### Real GDP Growth of Major Trading Partners

Compounded annual rates of change

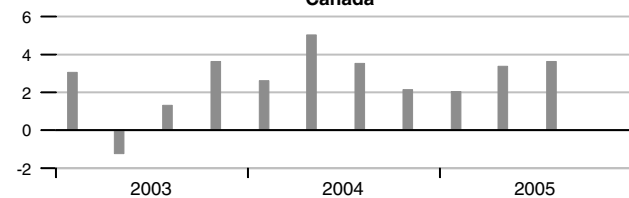
#### United Kingdom



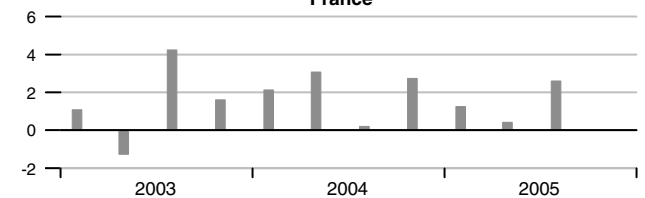
#### Germany



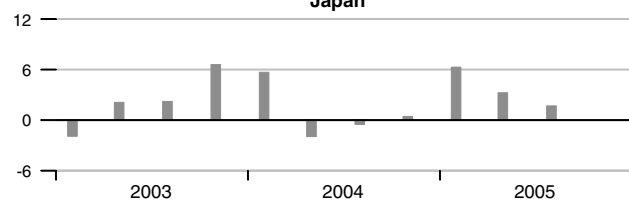
#### Canada



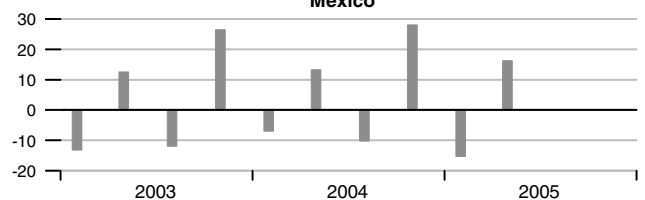
#### France



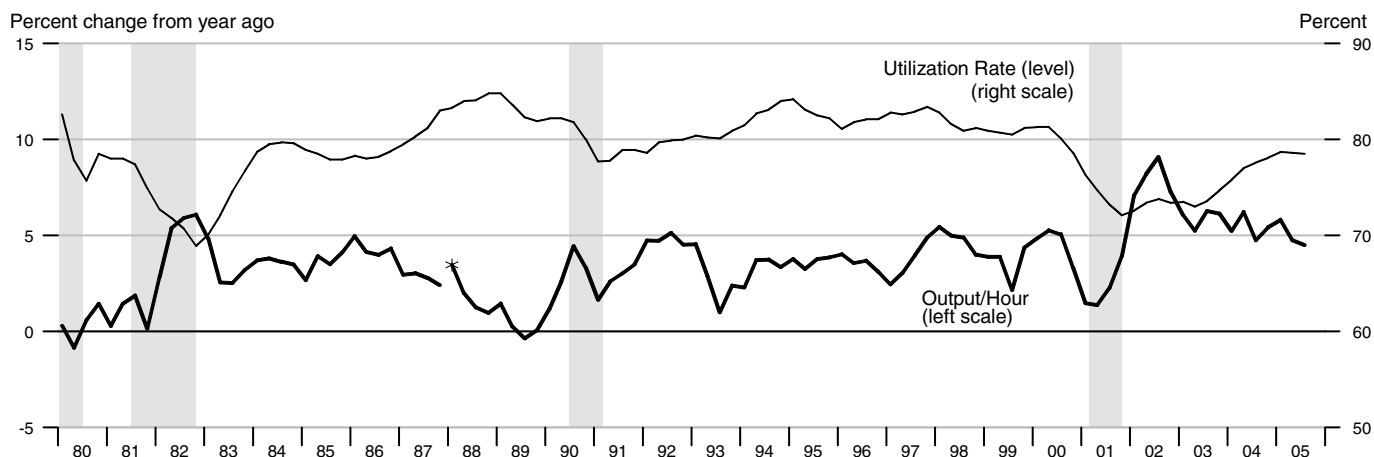
#### Japan



#### Mexico

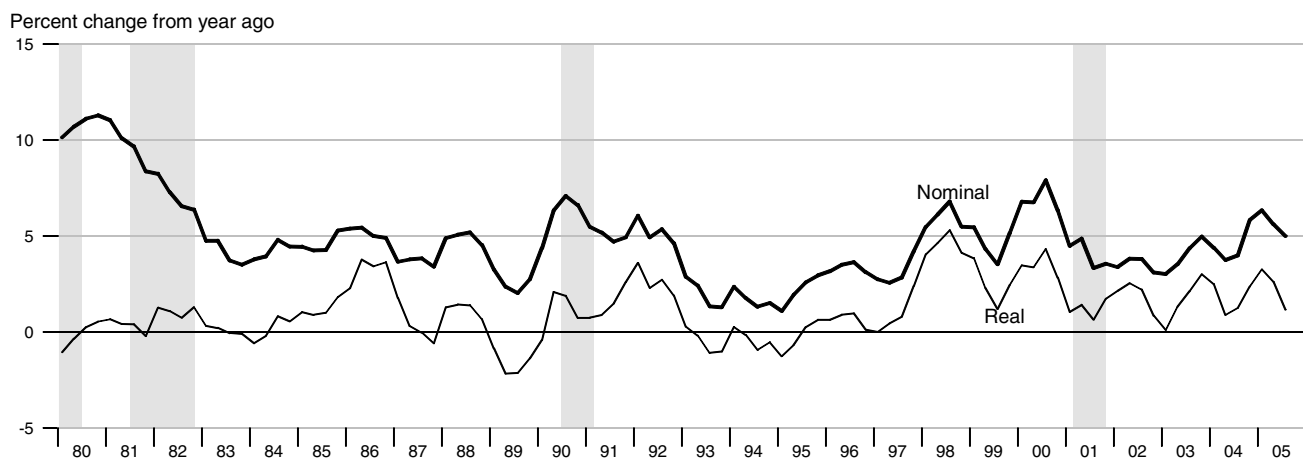


### Output per Hour and Capacity Utilization, Manufacturing

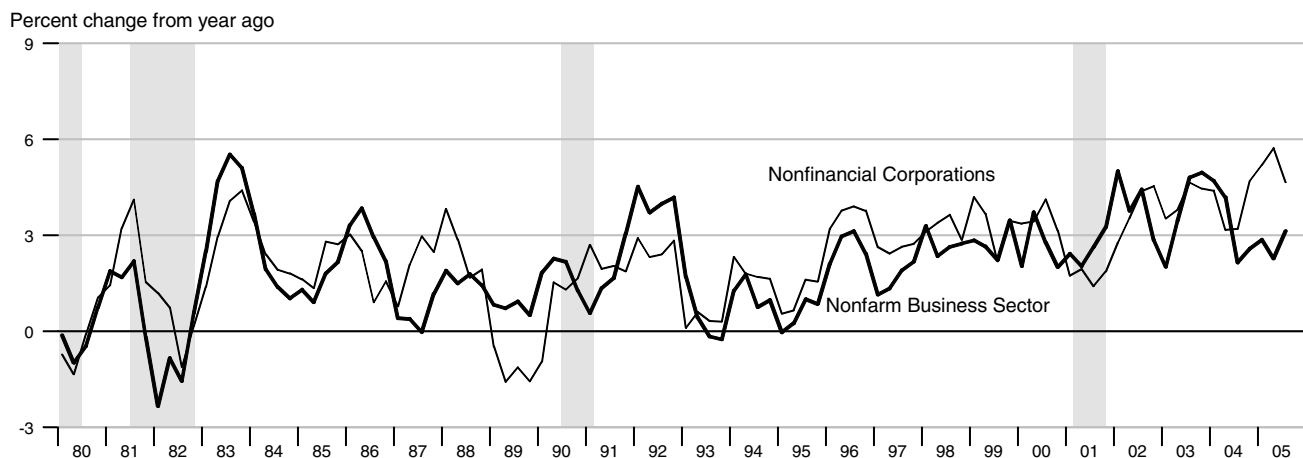


\*Data from 1987 to the present are on a NAICS basis; data prior to 1987 are on an SIC basis and are not strictly comparable (see End Note).

### Nonfarm Compensation per Hour

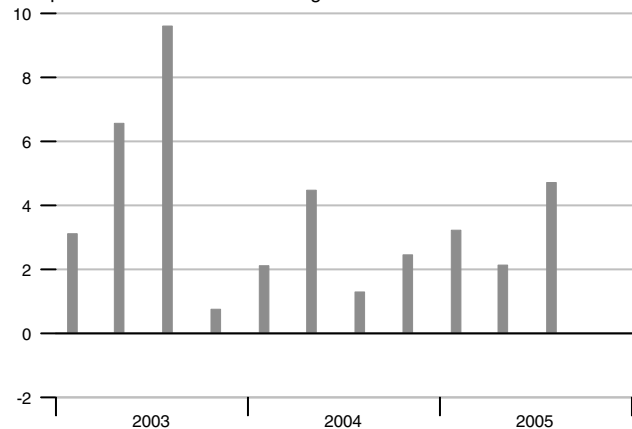


### Output per Hour, Nonfarm Business and Nonfinancial Corporations



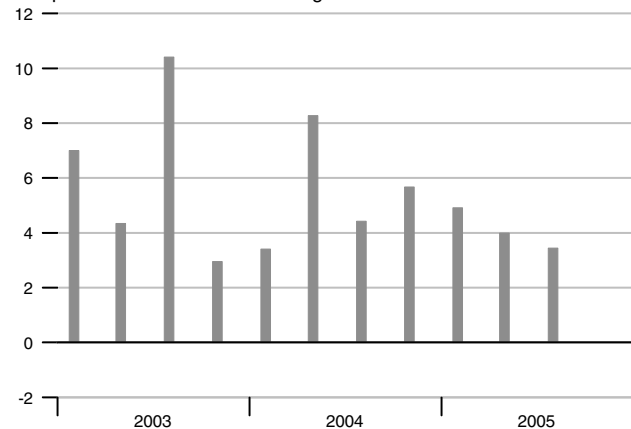
### Nonfarm Output per Hour

Compounded annual rates of change



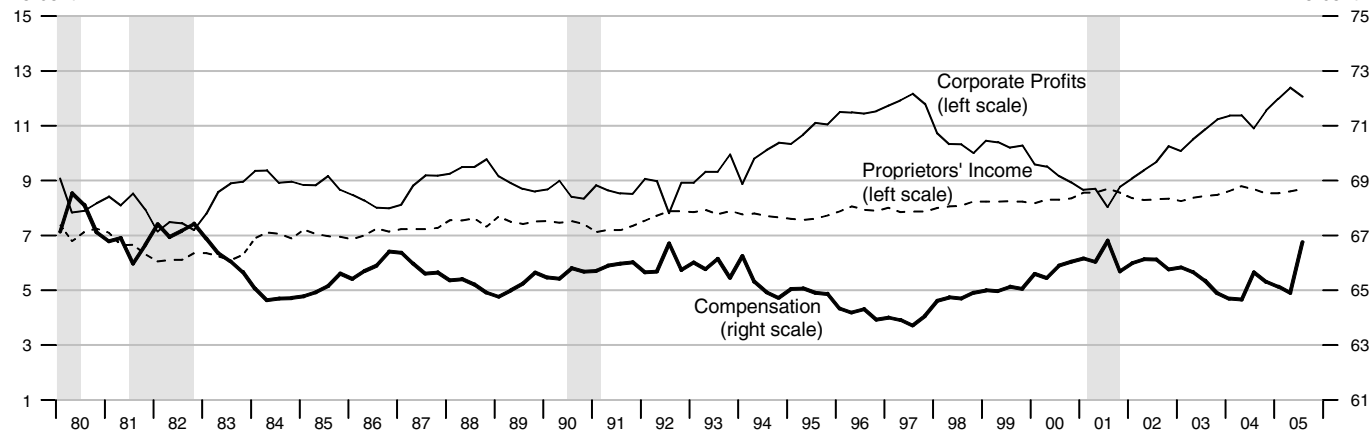
### Manufacturing Output per Hour

Compounded annual rates of change



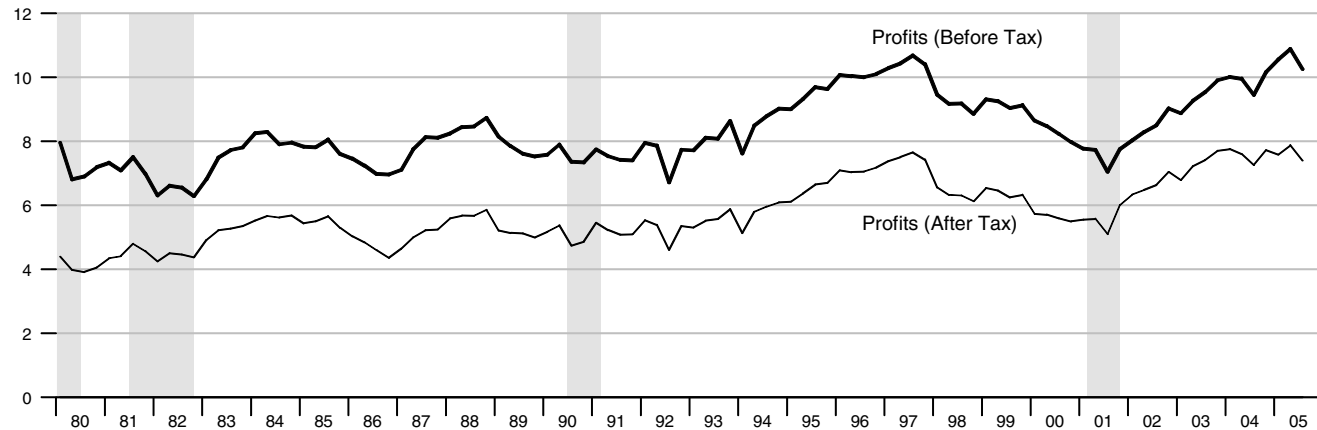
### Selected Component Shares of National Income

Percent



### Corporate Profits

Percent of GDP





	GDP Chain Price Index			Employment Cost Index			ECI: Wages			ECI: Benefits		
	Index	Percent change		Index	Percent change		Index	Percent change		Index	Percent change	
		Annual rate	Year ago		Annual rate	Year ago		Annual rate	Year ago		Annual rate	Year ago
2001	102.402		2.4	155.0		4.1	151.4		3.7	163.8		5.0
2002	104.193		1.7	160.9		3.8	156.4		3.3	171.7		4.9
2003	106.310		2.0	167.3		4.0	160.9		2.9	182.5		6.3
2004	109.102		2.6	173.9		3.9	165.0		2.5	195.4		7.1
2002 1	103.553	1.7	2.0	158.8	3.3	4.0	154.8	3.7	3.5	168.3	2.7	4.7
2	103.944	1.5	1.6	160.5	4.4	4.1	156.2	3.7	3.6	170.6	5.6	5.0
3	104.347	1.6	1.6	161.5	2.5	3.7	156.9	1.8	3.2	172.7	5.0	4.9
4	104.926	2.2	1.7	162.8	3.3	3.4	157.7	2.1	2.8	175.2	5.9	4.8
2003 1	105.724	3.1	2.1	165.0	5.5	3.9	159.3	4.1	2.9	178.5	7.7	6.1
2	106.019	1.1	2.0	166.4	3.4	3.7	160.3	2.5	2.6	180.9	5.5	6.0
3	106.500	1.8	2.1	168.2	4.4	4.1	161.6	3.3	3.0	183.9	6.8	6.5
4	106.996	1.9	2.0	169.6	3.4	4.2	162.5	2.2	3.0	186.7	6.2	6.6
2004 1	107.951	3.6	2.1	171.5	4.6	3.9	163.5	2.5	2.6	190.9	9.3	6.9
2	108.976	3.9	2.8	173.1	3.8	4.0	164.5	2.5	2.6	194.1	6.9	7.3
3	109.371	1.5	2.7	174.8	4.0	3.9	165.7	3.0	2.5	196.7	5.5	7.0
4	110.111	2.7	2.9	176.2	3.2	3.9	166.4	1.7	2.4	199.9	6.7	7.1
2005 1	110.950	3.1	2.8	177.3	2.5	3.4	167.4	2.4	2.4	202.0	4.3	5.8
2	111.655	2.6	2.5	178.4	2.5	3.1	168.4	2.4	2.4	203.6	3.2	4.9
3	112.567	3.3	2.9	179.8	3.2	2.9	169.4	2.4	2.2	206.2	5.2	4.8
	Exports			Imports			Nonfarm Output per Hour			Nonfarm Compensation per Hour		
	Billions of 2000 \$	Percent change		Billions of 2000 \$	Percent change		Index	Percent change		Index	Percent change	
		Annual rate	Year ago		Annual rate	Year ago		Annual rate	Year ago		Annual rate	Year ago
2001	1036.699		-5.4	1435.782		-2.7	118.499		2.5	139.259		4.0
2002	1013.293		-2.3	1484.629		3.4	123.262		4.0	144.177		3.5
2003	1031.207		1.8	1552.573		4.6	127.967		3.8	149.908		4.0
2004	1117.879		8.4	1719.187		10.7	132.306		3.4	156.655		4.5
2002 1	992.760	5.2	-9.5	1434.026	11.7	-4.1	122.460	6.5	5.0	142.712	6.1	3.4
2	1017.986	10.6	-4.0	1476.911	12.5	2.1	122.690	0.8	3.8	144.190	4.2	3.8
3	1025.243	2.9	1.6	1497.409	5.7	6.4	123.921	4.1	4.4	144.836	1.8	3.8
4	1017.174	-3.1	3.8	1530.186	9.0	9.7	123.977	0.2	2.9	144.978	0.4	3.1
2003 1	1009.709	-2.9	1.7	1520.372	-2.5	6.0	124.932	3.1	2.0	147.028	5.8	3.0
2	1004.457	-2.1	-1.3	1532.901	3.3	3.8	126.933	6.6	3.5	149.273	6.2	3.5
3	1032.248	11.5	0.7	1548.412	4.1	3.4	129.879	9.6	4.8	151.153	5.1	4.4
4	1078.445	19.1	6.0	1608.623	16.5	5.1	130.124	0.8	5.0	152.178	2.7	5.0
2004 1	1091.798	5.0	8.1	1654.829	12.0	8.8	130.806	2.1	4.7	153.475	3.5	4.4
2	1110.194	6.9	10.5	1711.867	14.5	11.7	132.246	4.5	4.2	154.869	3.7	3.7
3	1125.027	5.5	9.0	1731.480	4.7	11.8	132.673	1.3	2.2	157.181	6.1	4.0
4	1144.496	7.1	6.1	1778.556	11.3	10.6	133.480	2.5	2.6	161.046	10.2	5.8
2005 1	1165.293	7.5	6.7	1810.728	7.4	9.4	134.543	3.2	2.9	163.199	5.5	6.3
2	1195.353	10.7	7.7	1809.577	-0.3	5.7	135.256	2.1	2.3	163.557	0.9	5.6
3	1202.731	2.5	6.9	1820.202	2.4	5.1	136.824	4.7	3.1	165.042	3.7	5.0

		Household Survey Employment				Nonfarm Payroll Employment				Nonfarm Aggregate Hours			
		Thousands	Change	Percent change		Thousands	Change	Percent change		Index	Percent change		
				Annual rate	Year ago			Annual rate	Year ago		Monthly rate	Annual rate	Year ago
2000		136901	3400		2.5	131792	2800		2.2	103.5			1.8
2001		136940	40		0.0	131833	41		0.0	102.1			-1.4
2002		136483	-458		-0.3	130345	-1487		-1.1	100.0			-2.0
2003		137734	1252		0.9	129999	-347		-0.3	98.6			-1.4
2004		139248	1513		1.1	131475	1476		1.1	100.3			1.7
2003	1	137415	773	2.3	1.0	130093	-169	-0.5	-0.3	99.0	-0.4	-1.7	-1.3
	2	137652	237	0.7	0.9	129845	-248	-0.8	-0.4	98.3	-0.8	-3.1	-2.0
	3	137574	-77	-0.2	0.5	129890	45	0.1	-0.3	98.3	0.1	0.3	-1.5
	4	138296	722	2.1	1.2	130168	278	0.9	-0.1	98.8	0.5	2.0	-0.6
2004	1	138408	112	0.3	0.7	130541	374	1.2	0.3	99.3	0.5	2.0	0.3
	2	138883	475	1.4	0.9	131325	784	2.4	1.1	100.0	0.6	2.6	1.7
	3	139608	725	2.1	1.5	131731	406	1.2	1.4	100.6	0.6	2.4	2.3
	4	140092	484	1.4	1.3	132302	571	1.7	1.6	101.2	0.6	2.4	2.4
2005	1	140295	203	0.6	1.4	132814	512	1.6	1.7	101.7	0.6	2.3	2.4
	2	141404	1109	3.2	1.8	133429	616	1.9	1.6	102.4	0.7	2.8	2.5
	3	142319	915	2.6	1.9	133969	540	1.6	1.7	103.0	0.5	2.1	2.4
2003	Nov	138457	435	3.8	1.4	130172	96	0.9	-0.1	99.1	0.3	3.7	-0.4
	Dec	138409	-48	-0.4	1.5	130255	83	0.8	0.1	98.6	-0.5	-5.9	-0.7
2004	Jan	138481	72	0.6	0.8	130372	117	1.1	0.1	99.3	0.7	8.9	0.0
	Feb	138334	-147	-1.3	0.7	130466	94	0.9	0.3	99.4	0.1	1.2	0.5
	Mar	138408	74	0.6	0.7	130786	320	3.0	0.7	99.3	-0.1	-1.2	0.4
	Apr	138645	237	2.1	0.7	131123	337	3.1	1.0	99.7	0.4	4.9	1.4
	May	138846	201	1.8	0.9	131373	250	2.3	1.2	100.3	0.6	7.5	2.1
	Jun	139158	312	2.7	1.0	131479	106	1.0	1.3	99.9	-0.4	-4.7	1.6
	Jul	139639	481	4.2	1.5	131562	83	0.8	1.3	100.3	0.4	4.9	2.0
	Aug	139658	19	0.2	1.5	131750	188	1.7	1.5	100.5	0.2	2.4	2.2
	Sep	139527	-131	-1.1	1.4	131880	130	1.2	1.5	100.9	0.4	4.9	2.5
	Oct	139827	300	2.6	1.3	132162	282	2.6	1.6	101.2	0.3	3.6	2.4
	Nov	140293	466	4.1	1.3	132294	132	1.2	1.6	101.1	-0.1	-1.2	2.0
	Dec	140156	-137	-1.2	1.3	132449	155	1.4	1.7	101.2	0.1	1.2	2.6
2005	Jan	140241	85	0.7	1.3	132573	124	1.1	1.7	101.5	0.3	3.6	2.2
	Feb	140144	-97	-0.8	1.3	132873	300	2.7	1.8	101.8	0.3	3.6	2.4
	Mar	140501	357	3.1	1.5	132995	122	1.1	1.7	101.9	0.1	1.2	2.6
	Apr	141099	598	5.2	1.8	133287	292	2.7	1.7	102.5	0.6	7.3	2.8
	May	141475	376	3.2	1.9	133413	126	1.1	1.6	102.3	-0.2	-2.3	2.0
	Jun	141638	163	1.4	1.8	133588	175	1.6	1.6	102.5	0.2	2.4	2.6
	Jul	142076	438	3.8	1.7	133865	277	2.5	1.8	102.8	0.3	3.6	2.5
	Aug	142449	373	3.2	2.0	134013	148	1.3	1.7	102.9	0.1	1.2	2.4
	Sep	142432	-17	-0.1	2.1	134030	17	0.2	1.6	103.2	0.3	3.6	2.3
	Oct	142646	214	1.8	2.0	134074	44	0.4	1.4	103.3	0.1	1.2	2.1
	Nov	142594	-52	-0.4	1.6	134289	215	1.9	1.5	103.2	-0.1	-1.2	2.1

		Unempl. Rate	Retail and Food Services Sales				Industrial Production				Treasury Yields	
			Billions of dollars	Percent change			Index	Percent change			(Percent)	
				Monthly/ quarterly	Annual rate	Year ago			Monthly/ quarterly	Annual rate	Year ago	3-mo
2000		4.0	3284.226			6.6	103.550			4.3	5.82	6.03
2001		4.8	3388.094			3.2	99.878			-3.5	3.39	5.02
2002		5.8	3474.391			2.5	100.000			0.1	1.60	4.61
2003		6.0	3623.849			4.3	100.624			0.6	1.01	4.02
2004		5.5	3888.780			7.3	104.725			4.1	1.37	4.27
2003	1	5.8	884.854	0.9	3.8	3.3	100.493	0.2	0.8	1.7	1.16	3.92
	2	6.1	895.092	1.2	4.7	3.3	99.653	-0.8	-3.3	-0.6	1.04	3.62
	3	6.1	919.020	2.7	11.1	5.0	100.548	0.9	3.6	-0.1	0.93	4.23
	4	5.9	924.883	0.6	2.6	5.5	101.804	1.2	5.1	1.5	0.92	4.29
2004	1	5.7	946.761	2.4	9.8	7.0	103.129	1.3	5.3	2.6	0.92	4.02
	2	5.6	961.468	1.6	6.4	7.4	104.446	1.3	5.2	4.8	1.08	4.60
	3	5.4	978.062	1.7	7.1	6.4	105.125	0.7	2.6	4.6	1.49	4.30
	4	5.4	1002.489	2.5	10.4	8.4	106.200	1.0	4.2	4.3	2.01	4.17
2005	1	5.3	1015.851	1.3	5.4	7.3	107.207	0.9	3.8	4.0	2.54	4.30
	2	5.1	1042.334	2.6	10.8	8.4	107.636	0.4	1.6	3.1	2.86	4.16
	3	5.0	1059.829	1.7	6.9	8.4	107.907	0.3	1.0	2.6	3.36	4.21
2003	Nov	5.9	309.864	1.3	16.4	6.2	102.038	0.9	11.5	1.5	0.93	4.30
	Dec	5.7	309.050	-0.3	-3.1	5.1	102.257	0.2	2.6	2.2	0.90	4.27
2004	Jan	5.7	311.973	0.9	12.0	5.4	102.679	0.4	5.1	2.1	0.88	4.15
	Feb	5.6	313.973	0.6	8.0	7.7	103.498	0.8	10.0	2.9	0.93	4.08
	Mar	5.7	320.815	2.2	29.5	7.9	103.211	-0.3	-3.3	2.8	0.94	3.83
	Apr	5.5	317.103	-1.2	-13.0	6.7	104.004	0.8	9.6	4.4	0.94	4.35
	May	5.6	324.439	2.3	31.6	9.4	104.956	0.9	11.6	5.4	1.02	4.72
	Jun	5.6	319.926	-1.4	-15.5	6.2	104.377	-0.6	-6.4	4.6	1.27	4.73
	Jul	5.5	323.929	1.3	16.1	6.6	104.995	0.6	7.3	4.7	1.33	4.50
	Aug	5.4	324.257	0.1	1.2	5.0	105.317	0.3	3.7	4.9	1.48	4.28
	Sep	5.4	329.876	1.7	22.9	7.7	105.062	-0.2	-2.9	4.0	1.65	4.13
	Oct	5.5	332.904	0.9	11.6	8.8	105.823	0.7	9.0	4.7	1.76	4.10
	Nov	5.4	333.002	0.0	0.4	7.5	106.035	0.2	2.4	3.9	2.07	4.19
	Dec	5.4	336.583	1.1	13.7	8.9	106.743	0.7	8.3	4.4	2.19	4.23
2005	Jan	5.2	336.785	0.1	0.7	8.0	106.948	0.2	2.3	4.2	2.33	4.22
	Feb	5.4	338.991	0.7	8.1	8.0	107.361	0.4	4.7	3.7	2.54	4.17
	Mar	5.2	340.075	0.3	3.9	6.0	107.312	-0.0	-0.5	4.0	2.74	4.50
	Apr	5.2	346.081	1.8	23.4	9.1	107.184	-0.1	-1.4	3.1	2.78	4.34
	May	5.1	344.933	-0.3	-3.9	6.3	107.434	0.2	2.8	2.4	2.84	4.14
	Jun	5.0	351.320	1.9	24.6	9.8	108.290	0.8	10.0	3.7	2.97	4.00
	Jul	5.0	357.285	1.7	22.4	10.3	108.273	-0.0	-0.2	3.1	3.22	4.18
	Aug	4.9	350.742	-1.8	-19.9	8.2	108.587	0.3	3.5	3.1	3.44	4.26
	Sep	5.1	351.802	0.3	3.7	6.6	106.860	-1.6	-17.5	1.7	3.42	4.20
	Oct	5.0	352.960	0.3	4.0	6.0	108.210	1.3	16.3	2.3	3.71	4.46
	Nov	5.0	353.866	0.3	3.1	6.3	108.960	0.7	8.6	2.8	3.88	4.54

		Consumer Price Index					Consumer Price Index less Food and Energy					Producer Price Index Finished Goods			
		Percent change					Percent change					Percent change			
		Index	Monthly/ quarterly	Annual rate	Year ago	Year to date	Index	Monthly/ quarterly	Annual rate	Year ago	Year to date	Index	Monthly/ quarterly	Annual rate	Year ago
2000		172.2			3.4		181.3			2.4		138.0			3.8
2001		177.1			2.8		186.1			2.7		140.7			1.9
2002		179.8			1.6		190.4			2.3		138.9			-1.3
2003		184.0			2.3		193.2			1.5		143.3			3.2
2004		188.9			2.7		196.6			1.8		148.5			3.6
2003	1	183.2	1.0	4.2	2.9	4.2	192.4	0.3	1.4	1.8	1.4	142.7	2.0	8.4	3.3
	2	183.4	0.1	0.4	2.2	2.3	192.8	0.2	0.8	1.5	1.1	142.2	-0.4	-1.5	2.5
	3	184.4	0.5	2.2	2.2	2.2	193.6	0.4	1.6	1.3	1.3	143.5	0.9	3.8	3.4
	4	184.8	0.2	0.9	1.9	1.9	194.1	0.3	1.0	1.2	1.2	144.9	1.0	4.0	3.6
2004	1	186.6	1.0	3.9	1.8	3.9	195.0	0.5	1.9	1.3	1.9	145.9	0.7	2.8	2.2
	2	188.6	1.1	4.4	2.8	4.2	196.2	0.6	2.6	1.8	2.2	148.0	1.4	5.8	4.1
	3	189.4	0.4	1.6	2.7	3.3	197.1	0.4	1.7	1.8	2.1	148.6	0.4	1.6	3.5
	4	191.0	0.9	3.6	3.4	3.4	198.2	0.6	2.3	2.1	2.1	151.6	2.1	8.5	4.6
2005	1	192.2	0.6	2.4	3.0	2.4	199.5	0.6	2.6	2.3	2.6	152.7	0.7	2.8	4.7
	2	194.1	1.0	4.2	2.9	3.3	200.5	0.5	2.0	2.2	2.3	153.9	0.8	3.3	4.0
	3	196.6	1.3	5.1	3.8	3.9	201.2	0.4	1.5	2.1	2.0	156.7	1.8	7.4	5.5
2003	Nov	184.6	-0.1	-1.3	1.8	1.8	194.0	0.0	0.0	1.1	1.1	144.6	-0.1	-1.6	3.4
	Dec	185.0	0.2	2.6	1.9	1.9	194.2	0.1	1.2	1.1	1.1	145.3	0.5	6.0	4.0
2004	Jan	185.9	0.5	6.0	2.0	6.0	194.6	0.2	2.5	1.2	2.5	145.7	0.3	3.4	3.2
	Feb	186.5	0.3	3.9	1.7	5.0	194.9	0.2	1.9	1.2	2.2	145.6	-0.1	-0.8	2.1
	Mar	187.3	0.4	5.3	1.7	5.1	195.5	0.3	3.8	1.6	2.7	146.4	0.5	6.8	1.5
	Apr	187.7	0.2	2.6	2.3	4.4	195.9	0.2	2.5	1.8	2.6	147.4	0.7	8.5	3.7
	May	188.8	0.6	7.3	3.0	5.0	196.2	0.2	1.9	1.7	2.5	148.3	0.6	7.6	4.7
	Jun	189.3	0.3	3.2	3.2	4.7	196.6	0.2	2.5	1.9	2.5	148.2	-0.1	-0.8	3.9
	Jul	189.2	-0.1	-0.6	2.9	3.9	196.8	0.1	1.2	1.8	2.3	148.3	0.1	0.8	3.9
	Aug	189.3	0.1	0.6	2.7	3.5	196.9	0.1	0.6	1.7	2.1	148.5	0.1	1.6	3.4
	Sep	189.6	0.2	1.9	2.5	3.3	197.5	0.3	3.7	2.0	2.3	148.9	0.3	3.3	3.3
	Oct	190.7	0.6	7.2	3.2	3.7	197.9	0.2	2.5	2.0	2.3	151.1	1.5	19.2	4.4
	Nov	191.2	0.3	3.2	3.6	3.7	198.2	0.2	1.8	2.2	2.2	152.1	0.7	8.2	5.2
	Dec	191.2	0.0	0.0	3.4	3.4	198.5	0.2	1.8	2.2	2.2	151.7	-0.3	-3.1	4.4
2005	Jan	191.3	0.1	0.6	2.9	0.6	198.9	0.2	2.4	2.2	2.4	151.9	0.1	1.6	4.3
	Feb	192.0	0.4	4.5	2.9	2.5	199.4	0.3	3.1	2.3	2.8	152.5	0.4	4.8	4.7
	Mar	193.2	0.6	7.8	3.2	4.3	200.1	0.4	4.3	2.4	3.3	153.7	0.8	9.9	5.0
	Apr	194.2	0.5	6.4	3.5	4.8	200.2	0.0	0.6	2.2	2.6	154.4	0.5	5.6	4.7
	May	194.1	-0.1	-0.6	2.8	3.7	200.5	0.1	1.8	2.2	2.4	153.7	-0.5	-5.3	3.6
	Jun	194.1	0.0	0.0	2.5	3.1	200.7	0.1	1.2	2.1	2.2	153.7	0.0	0.0	3.7
	Jul	195.1	0.5	6.4	3.1	3.5	201.0	0.1	1.8	2.1	2.2	155.2	1.0	12.4	4.7
	Aug	196.1	0.5	6.3	3.6	3.9	201.2	0.1	1.2	2.2	2.0	156.0	0.5	6.4	5.1
	Sep	198.5	1.2	15.7	4.7	5.1	201.4	0.1	1.2	2.0	2.0	158.9	1.9	24.7	6.7
	Oct	198.9	0.2	2.4	4.3	4.9	201.9	0.2	3.0	2.0	2.1	160.0	0.7	8.6	5.9
	Nov	197.8	-0.6	-6.4	3.5	3.8	202.4	0.2	3.0	2.1	2.1	158.9	-0.7	-7.9	4.5

## Notes

*Pages 4, 5:* **Final Sales** is gross domestic product (GDP) minus change in private inventories. **Advance, Preliminary, and Final GDP Growth Rates** are released during the first, second, and third months of the following quarter. Changes result from incorporation of more complete information. Real GDP is measured in 2000 dollars. The **ISM** (formerly Purchasing Managers') **Index** is a weighted average of diffusion indexes for new orders, production, supplier deliveries, inventories, and employment. **Aggregate and Average Weekly Hours** are paid hours of production and nonsupervisory employees. The **Inventory-Sales Ratio** uses nominal (current-dollar) inventory and sales data.

*Page 6:* For information on how to calculate the **Contribution** of a component to the overall GDP growth rate, see the October 1999 issue of the Survey of Current Business, p. 16. The sign is changed for **Imports**.

*Page 7:* Ten-year **Treasury Yields** are adjusted to constant maturity; three-month yields are secondary market averages. All rates used in the yield curves are adjusted to constant maturity. The 30-year constant maturity series was discontinued by the Treasury Department as of Feb. 18, 2002. **Standard and Poor's 500 Index with Reinvested Dividends** shows the total return: capital gains plus dividends.

*Pages 8, 9:* **Oil** (West Texas intermediate) and **Natural Gas** (Henry Hub) spot and futures **prices** are listed in the *Wall Street Journal*. Spot prices are monthly averages of daily prices; futures prices are usually taken from the last trading day of the month. **Consumer Price Index** is for all urban consumers. The **Consumption Chain Price Index** is the index associated with the personal consumption expenditures component of GDP. The **Employment Cost Index (ECI)** covers private nonfarm employers. **ECI Compensation** refers to a fixed sample of jobs, while **Compensation per Hour** covers all workers in the nonfarm business sector in a given quarter. In both cases, compensation is wages and salaries plus benefits.

*Pages 10, 11:* Effective with the May 2003 **Employment Situation**, the establishment survey data for employment, hours, and earnings have been converted from the 1987 SIC system to the 2002 NAICS system. All published NAICS-based labor series have been revised back to at least 1990. For more information see <http://www.bls.gov/ces/>. **Nonfarm Payroll Employment** is counted in a survey of about 400,000 establishments (Current Employment Survey). It excludes self-employed individuals and workers in private households, but double-counts individuals with more than one job. The **Household Survey** (Current Population Survey) of about 60,000 households provides estimates of civilian employment, unemployment rate, labor force participation rate, and employment-population ratio. **Population** is civilian, noninstitutional, 16 years and over. The 90 percent confidence intervals for the unemployment rate ( $\pm 0.2$  percentage points) and change in household survey employment ( $\pm 290,000$ ) measure uncertainty due to sample size. Because the household survey was changed in January 1994, data prior to this date are not strictly comparable. The Bureau of Labor Statistics announced several revisions to the Household Survey on Feb. 7, 2003, with the release of the January 2003 data. For more information, see [www.bls.gov/cps/](http://www.bls.gov/cps/).

*Page 13:* The **Michigan Consumer Sentiment Index** shows changes in a summary measure of consumers' answers to five questions about their current and expected financial situation, expectations about future economic conditions, and attitudes about making large purchases. The survey is based on a representative sample of U.S. households.

*Page 15:* **Gross Private Saving** is the sum of personal saving, undistributed corporate profits with IVA and CCAAdj (see notes for pp. 18-19), and private wage accruals less disbursements. **Gross Government Saving** is net government saving (surplus/deficit) plus consumption of fixed capital. **Balance on Current Account (NIPA)** is net capital transfer payments to the rest of the world plus net lending or net borrowing (international trade and income flows).

*Pages 16, 17:* **Government Consumption and Investment** is current expenditures on goods and services, including capital consumption (depreciation) and gross investment, as reported in the NIPAs. The **Unified Federal Budget Surplus/Deficit** differs from **NIPA Basis** in four main ways: (1) NIPA excludes

transactions involving existing assets; (2) NIPA outlays exclude government investment and include consumption of government capital, while unified budget outlays do the reverse; (3) NIPA accounts exclude Puerto Rico and U.S. territories; and (4) various timing issues are handled differently. **Outlays and Receipts** are from the NIPAs, except as noted. Since 1977, the federal **Fiscal Year** starts on October 1. Excluded agency debt was 0.6 percent of federal debt at the end of fiscal 1997. **Federal Debt Held by the Public** includes holdings of the Federal Reserve System and excludes holdings of the social security and other federal trust funds. Federal grants in aid to state and local governments appear in both state and local receipts and federal outlays.

*Pages 18, 19:* The **Trade Balance** (shown on a balance of payments basis) is the difference between exports and imports of goods (merchandise) and services. It is nearly identical in concept to the **Net Exports** component of GDP, but differs slightly in accounting details. The **Investment Income Balance** equals income received from U.S.-owned assets in other countries minus income paid on foreign-owned assets in the U.S. The investment income balance is nearly identical in concept to the difference between gross national product and gross domestic product, but differs in accounting details. The **Current Account Balance** is the trade balance plus the balance on investment income plus net unilateral transfers to the U.S. from other countries.

*Pages 20, 21:* **Output per Hour (Y/H)**, **Unit Labor Cost (C/Y)**, and **Compensation per Hour (C/H)** are indexes which approximately obey the following relationship:  $\%(Y/H) + \%(C/Y) = \%(C/H)$  with  $\%( )$  meaning percent changes. Unit labor cost is shown on page 9. **Real Compensation per Hour** uses the CPI to adjust for the effects of inflation. Nonfarm business accounted for about 76 percent of the value of GDP in 1996, while nonfinancial corporations accounted for about 54 percent. **Inventory Valuation Adjustments (IVA)** remove the effect of changes in the value of existing inventories from corporate profits and proprietors' income. (This change in value does not correspond to current production and therefore is not part of GDP). **Capital Consumption Adjustments (CCAdj)** increase profits and proprietors' income by the difference between estimates of economic depreciation and depreciation allowed by the tax code. Components of national income not shown are rental income of persons and net interest.

**NOTE:** Most measures of economic activity are now based on the 2002 North American Industry Classification System (NAICS), which replaces the 1987 Standard Industry Classification (SIC) system.

## Sources

*Bureau of Economic Analysis (BEA), U.S. Dept. of Commerce*

National income and product accounts, international trade and investment data (except by country), auto and light truck sales.

*Census Bureau, U.S. Dept. of Commerce*

Inventory-sales ratios, retail sales, capital goods orders, housing starts, exports and imports by country.

*Bureau of Labor Statistics (BLS), U.S. Dept. of Labor*

All employment-related data, employment cost index, consumer and producer price indexes, unit labor cost, output per hour, compensation per hour, multifactor productivity.

*United States Department of Treasury*

Unified budget receipts, outlays, deficit, debt.

*Federal Reserve Board*

Index of industrial production, treasury yields, exchange rates, capacity utilization, household debt.

*The Survey Research Center, The University of Michigan*

Consumer sentiment index.

*The Conference Board*

Help-wanted advertising index.

*Organization for Economic Cooperation and Development (OECD)*

GDP for major trading partners (not available on FRED).