



## Business Cycle Measures

At the time this cover page was written, the National Bureau of Economic Research (NBER) had not yet announced the official end of the recession. Many economists, however, believe that it ended in mid-2009. We discuss two business cycle measures that provide some statistical evidence of a trough long before an NBER announcement, which could help policymakers decide when to exit quantitative easing.

The Philadelphia Fed publishes the Aruoba-Diebold-Scotti business conditions index (ADS index), which is constructed using data measured at mixed frequencies: gross domestic product (measured quarterly); employment, industrial production, personal income less transfer payments, and manufacturing and trade sales (measured monthly); and initial jobless claims (measured weekly). Ironically, the ADS index is a daily time series that contains no daily data—the authors of the index note in their published paper that including a daily interest rate spread (term spread, or the difference between the 10-year T-bond and 3-month T-bill yields) did not improve the index’s performance. The index is revised whenever any series is updated.<sup>1</sup>

Economist Michael Dueker at Russell Investments introduced a business cycle index (Russell BCI) that is updated around the 15th of each month. Dueker uses both macroeconomic and financial data to assess the current state of the economy and make predictions for the upcoming three years. His estimation uses employment, inflation excluding food and energy, the term spread, the difference between Aaa and Baa corporate bond yields, and the difference between commercial paper and T-bill yields.<sup>2</sup>

The chart shows the ADS index vintage from June 17, 2010 (which includes values through June 12) and the Russell BCI vintage from June 2010 (which includes values through May). With the ADS index, values above zero indicate the degree to which business conditions are better than average, whereas the opposite holds true for values below zero. Russell BCI values are expressed as the number of standard deviations from zero; larger positive (negative) values indicate that conditions are farther from a business cycle peak (trough).

Both measures show August 2009 as the first full month with positive values since the recession began, which indicates that the recession ended last July. Even

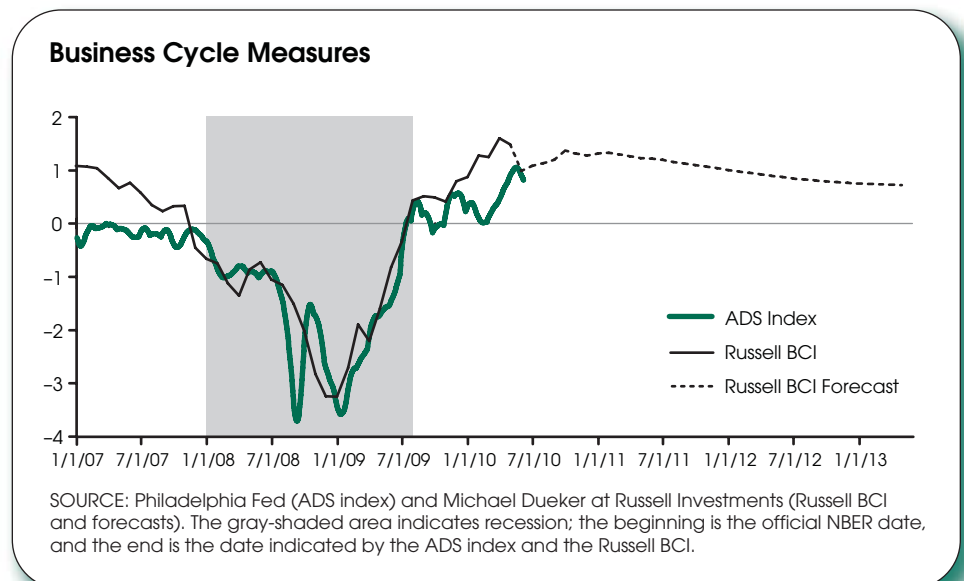
though the ADS index has dipped below zero briefly since then, the authors of the index still classify July 2009 as the trough. Since early February 2010, the ADS index has generally shown steady improvement in business conditions. Additionally, the Russell BCI forecasts show a slight decline in conditions with the release of June data but then fairly steady conditions through mid-2013.

Both the ADS index and Russell BCI had already pinpointed July 2009 as the end of the recession in vintages released in mid-September of 2009. Although the recession’s end date is not official, these measures provide some idea about the overall state of the economy.

—Kristie M. Engemann and Michael T. Owyang

<sup>1</sup> For an introduction to the model, see Aruoba, S. Borağan; Diebold, Francis X. and Scotti, Chiara. “Real-Time Measurement of Business Conditions.” *Journal of Business and Economic Statistics*, October 2009, 27(4), pp. 417-27. Additional details on the ADS index were obtained from the Philadelphia Fed ([www.philadelphiafed.org/research-and-data/real-time-center/business-conditions-index/](http://www.philadelphiafed.org/research-and-data/real-time-center/business-conditions-index/)).

<sup>2</sup> For an introduction to the model, see Dueker, Michael. “Dynamic Forecasts of Qualitative Variables: A Qual VAR Model of U.S. Recessions.” *Journal of Business and Economic Statistics*, January 2005, 23(1), pp. 96-104. Additional details on the Russell BCI were obtained from Russell Investments ([www.russell.com/Helping-Advisors/Markets/BusinessCycleIndex.asp](http://www.russell.com/Helping-Advisors/Markets/BusinessCycleIndex.asp)).



Views expressed do not necessarily reflect official positions of the Federal Reserve System.

# Contents

---

---

## Page

3	Monetary and Financial Indicators at a Glance
4	Monetary Aggregates and Their Components
6	Reserves Markets and Short-Term Credit Flows
7	Senior Loan Officer Opinion Survey on Bank Lending Practices
8	Measures of Expected Inflation
9	Interest Rates
10	Policy-Based Inflation Indicators
11	Implied Forward Rates, Futures Contracts, and Inflation-Indexed Securities
12	Velocity, Gross Domestic Product, and M2
14	Bank Credit
15	Stock Market Index and Foreign Inflation and Interest Rates
16	Reference Tables
18	Definitions, Notes, and Sources

## Conventions used in this publication:

1. Unless otherwise indicated, data are monthly.
2. Except where otherwise noted, solid shading indicates recessions, as determined by the National Bureau of Economic Research. The NBER has not yet determined the end of the recession that began in December 2007; however, the hatched shading shows that the recession ended in July 2009. We made this determination based on a statistical model for dating business cycle turning points developed by Marcelle Chauvet and Jeremy Piger (“A Comparison of the Real-Time Performance of Business Cycle Dating Methods,” *Journal of Business and Economic Statistics*, 2008, 26, 42-49). For more information, see [http://www.uoregon.edu/~jpiger/us\\_recession\\_probs.htm](http://www.uoregon.edu/~jpiger/us_recession_probs.htm).
3. *Percent change at an annual rate* is the simple, not compounded, monthly percent change multiplied by 12. For example, using consecutive months, the percent change at an annual rate in  $x$  between month  $t-1$  and the current month  $t$  is:  $[(x_t/x_{t-1})-1] \times 1200$ . Note that this differs from *National Economic Trends*. In that publication, monthly percent changes are compounded and expressed as annual growth rates.
4. The *percent change from year ago* refers to the percent change from the same period in the previous year. For example, the percent change from year ago in  $x$  between month  $t-12$  and the current month  $t$  is:  $[(x_t/x_{t-12})-1] \times 100$ .

We welcome your comments addressed to:

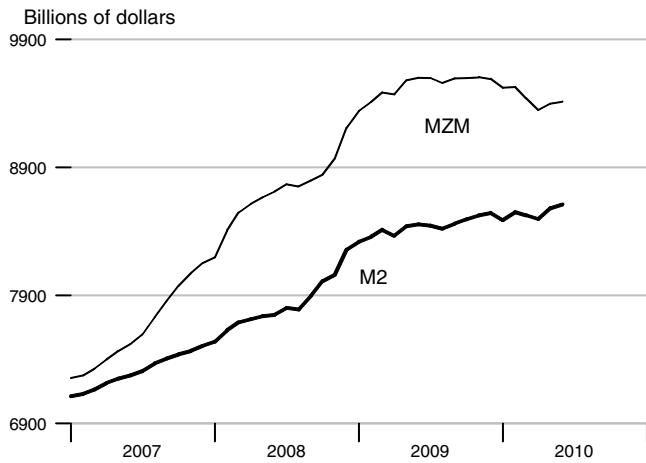
Editor, *Monetary Trends*  
Research Division  
Federal Reserve Bank of St. Louis  
P.O. Box 442  
St. Louis, MO 63166-0442

On March 23, 2006, the Board of Governors of the Federal Reserve System ceased the publication of the M3 monetary aggregate. It also ceased publishing the following components: large-denomination time deposits, RPs, and eurodollars.

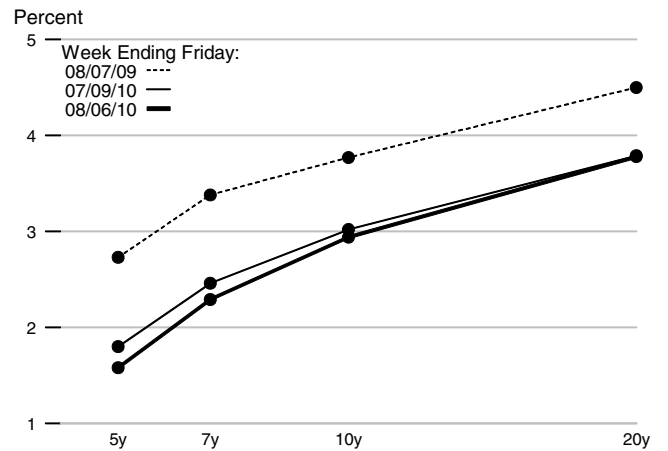
or to:

stlsFRED@stls.frb.org

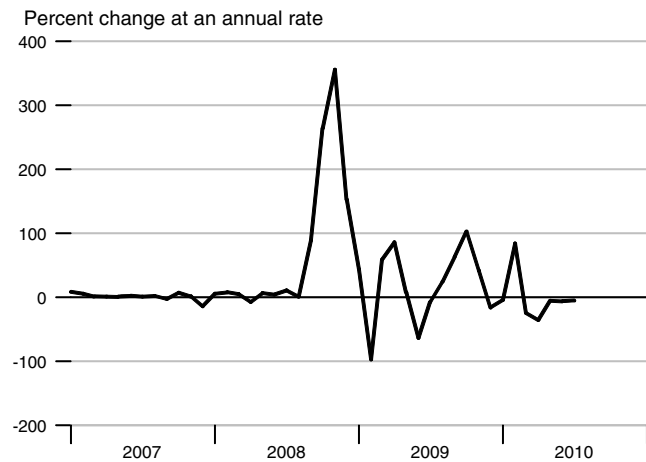
### M2 and MZM



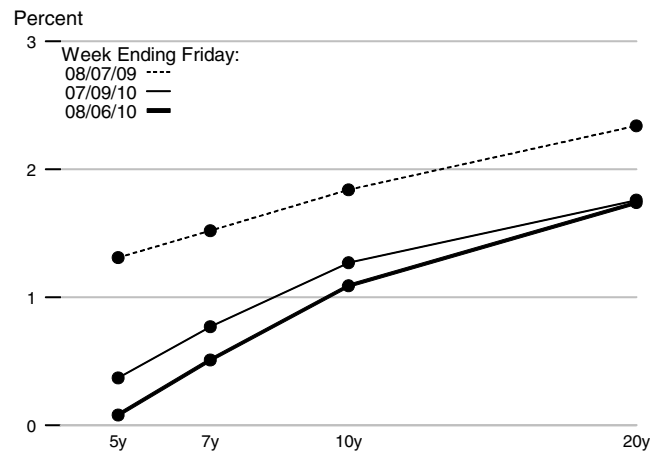
### Treasury Yield Curve



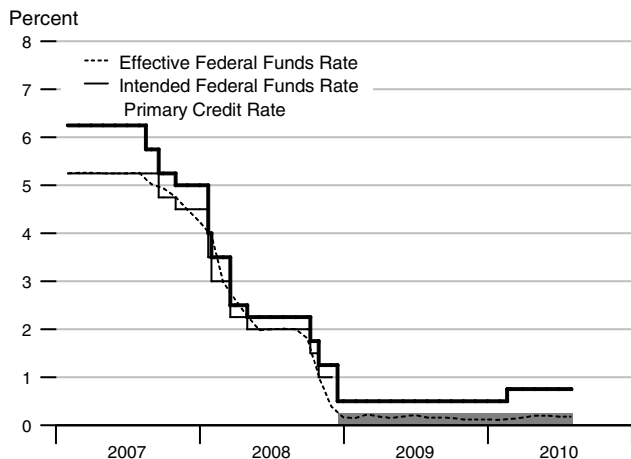
### Adjusted Monetary Base



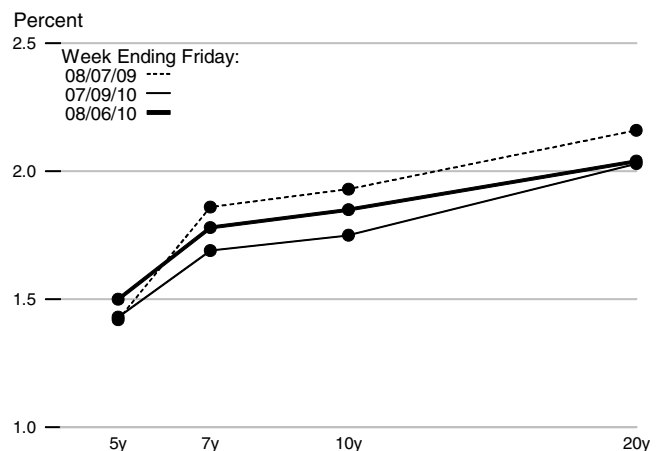
### Real Treasury Yield Curve



### Reserve Market Rates



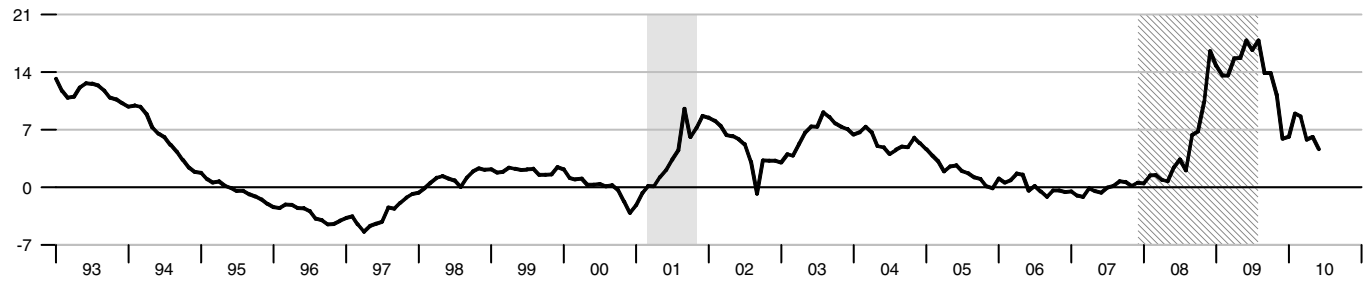
### Inflation-Indexed Treasury Yield Spreads



Note: Effective December 16, 2008, FOMC reports the intended Federal Funds Rate as a range.

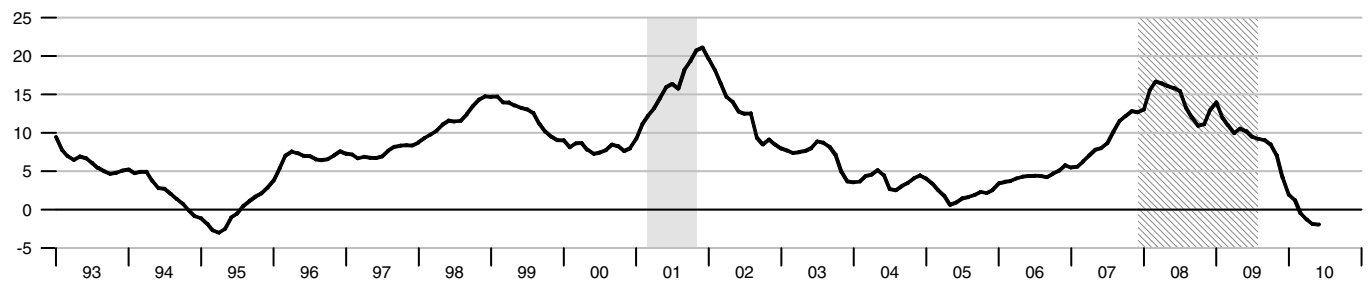
**M1**

Percent change from year ago



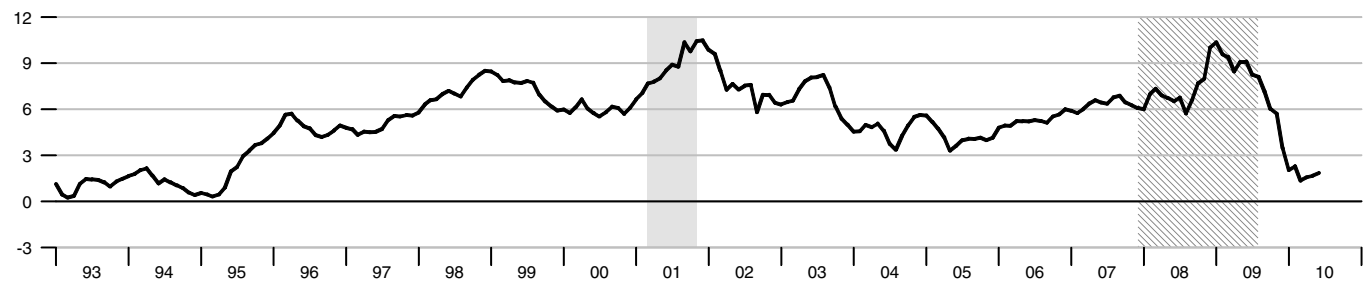
**M2M**

Percent change from year ago



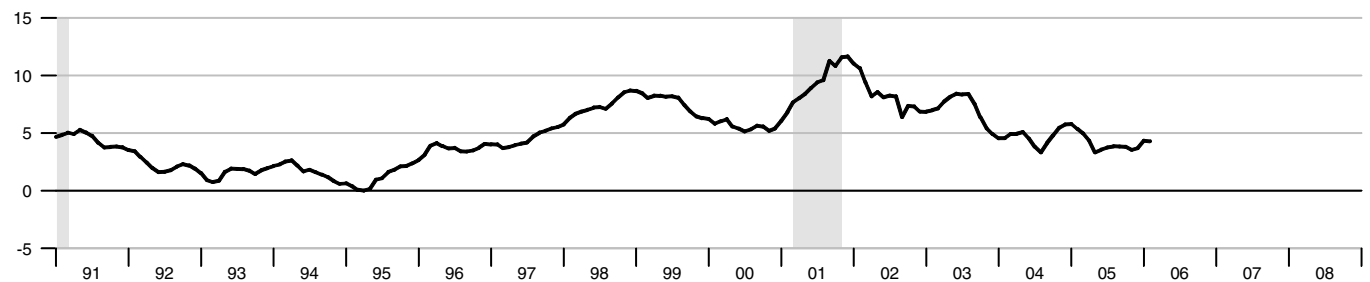
**M2**

Percent change from year ago



**Monetary Services Index - M2\*\***

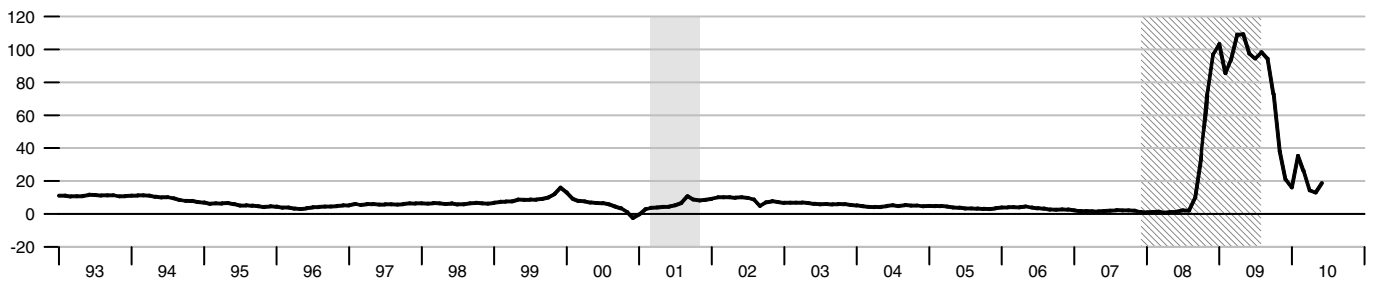
Percent change from year ago



\*\*We will not update the MSI series until we revise the code to accommodate the discontinuation of M3.

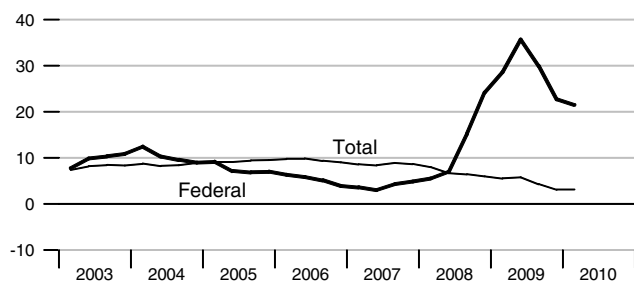
### Adjusted Monetary Base

Percent change from year ago



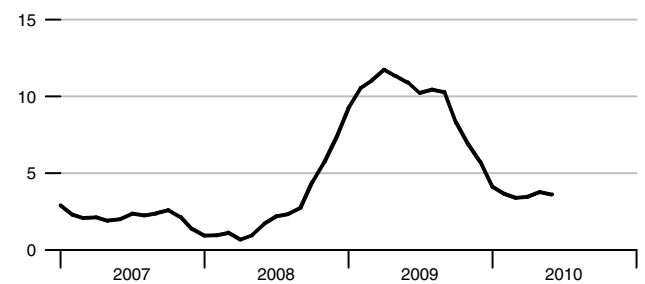
### Domestic Nonfinancial Debt

Percent change from year ago



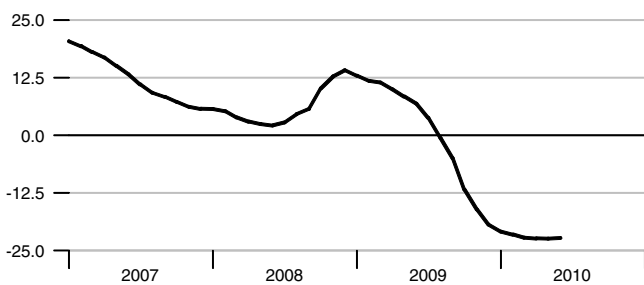
### Currency Held by the Nonbank Public

Percent change from year ago



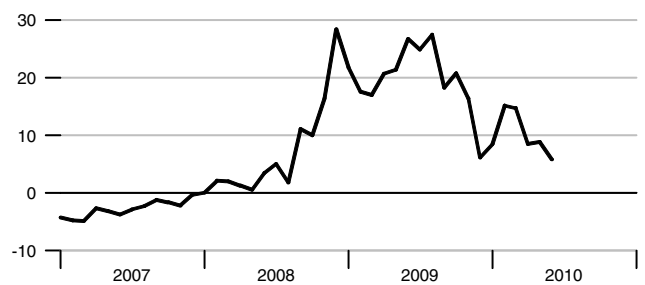
### Small Denomination Time Deposits\*

Percent change from year ago



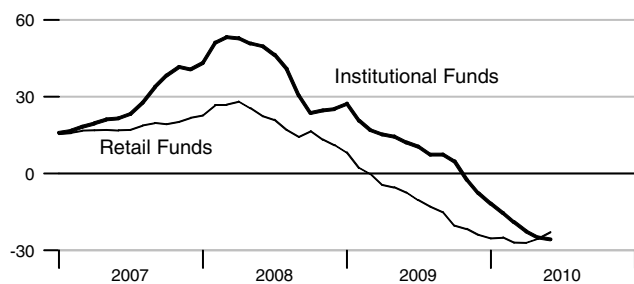
### Checkable Deposits

Percent change from year ago



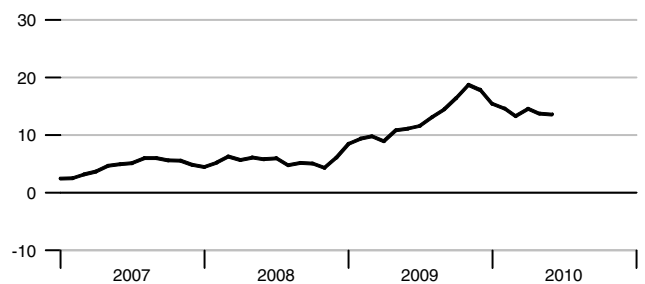
### Money Market Mutual Fund Shares

Percent change from year ago



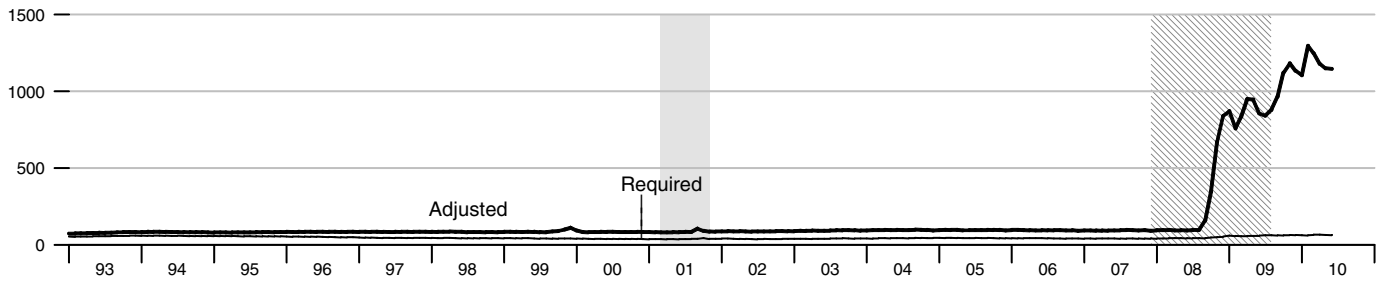
### Savings Deposits

Percent change from year ago



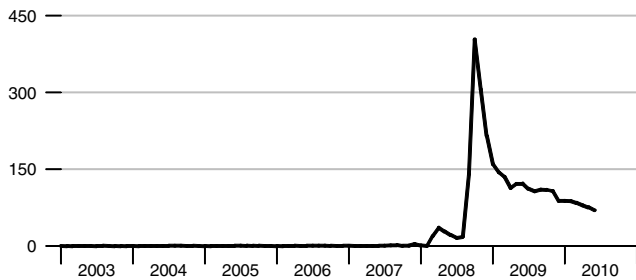
### Adjusted and Required Reserves

Billions of dollars



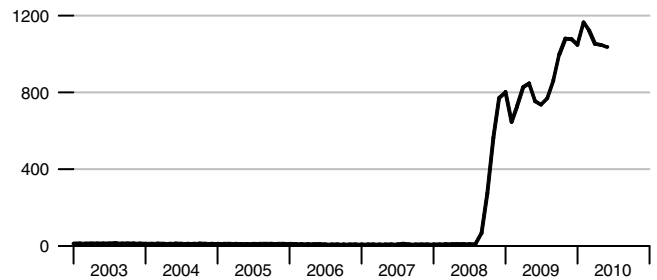
### Total Borrowings, nsa

Billions of dollars



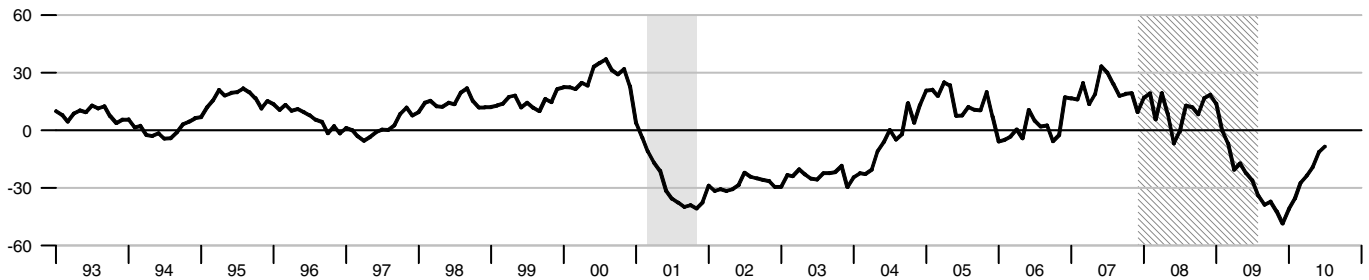
### Excess Reserves plus RCB Contracts

Billions of dollars



### Nonfinancial Commercial Paper

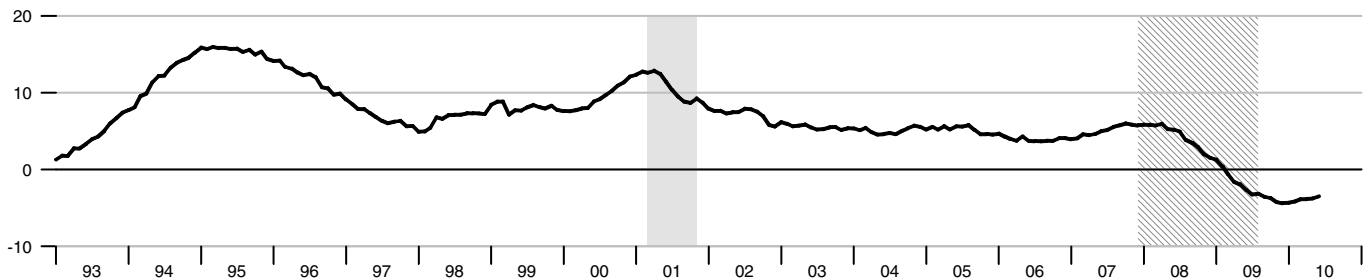
Percent change from year ago



As of April 10, 2006, the Federal Reserve Board made major changes to its commercial paper calculations. For more information, please refer to <http://www.federalreserve.gov/releases/cp/about.htm>.

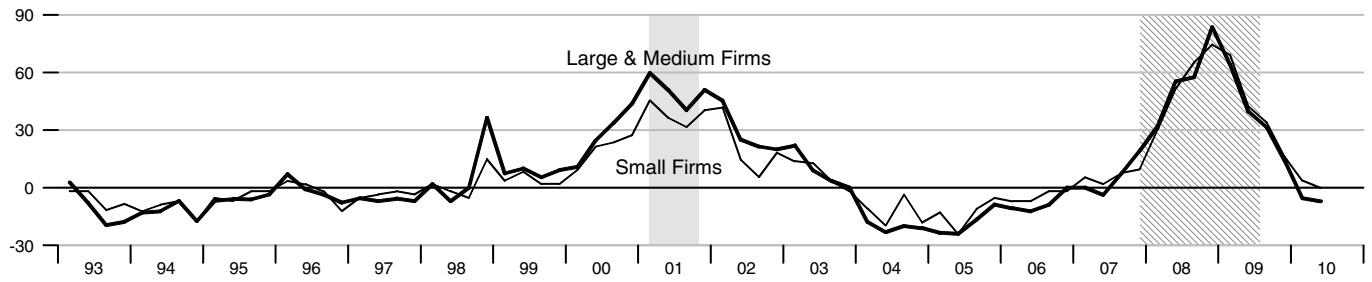
### Consumer Credit

Percent change from year ago



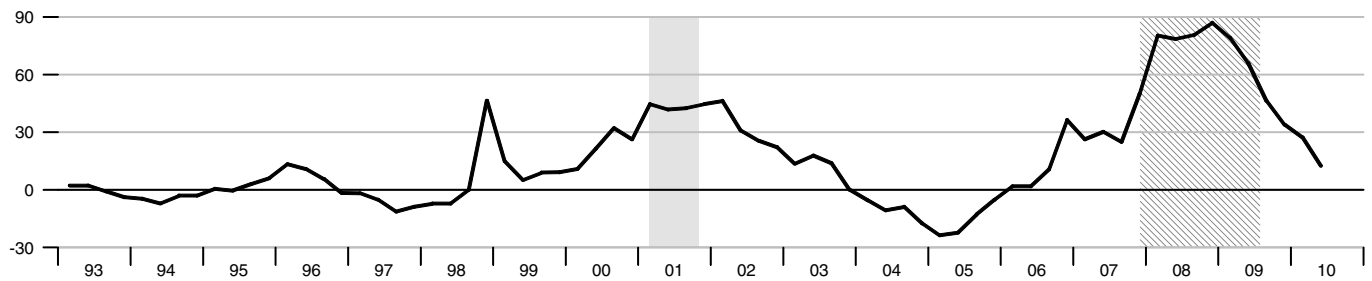
**Net Percentage of Domestic Banks Tightening Standards for Commercial and Industrial Loans**

Percentage



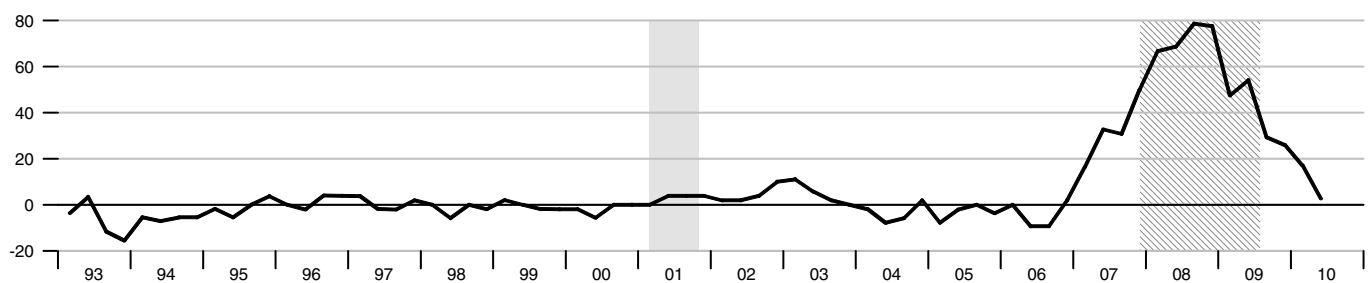
**Net Percentage of Domestic Banks Tightening Standards for Commercial Real Estate Loans**

Percentage



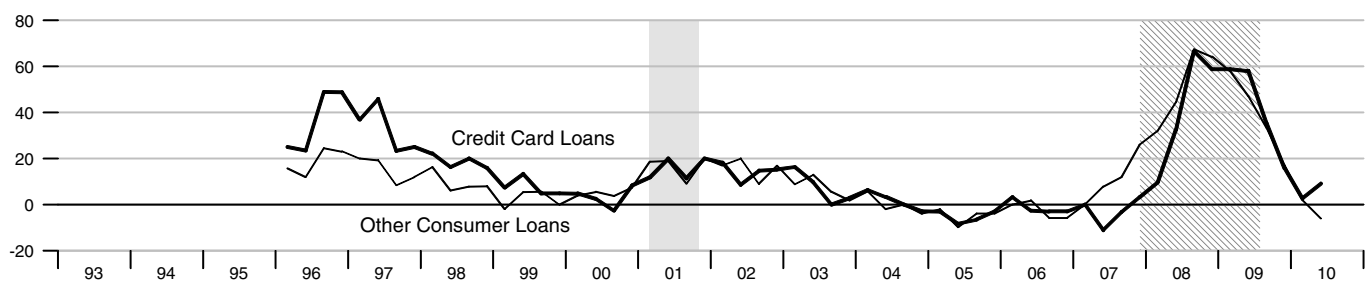
**Net Percentage of Domestic Banks Tightening Standards for Residential Mortgage Loans**

Percentage

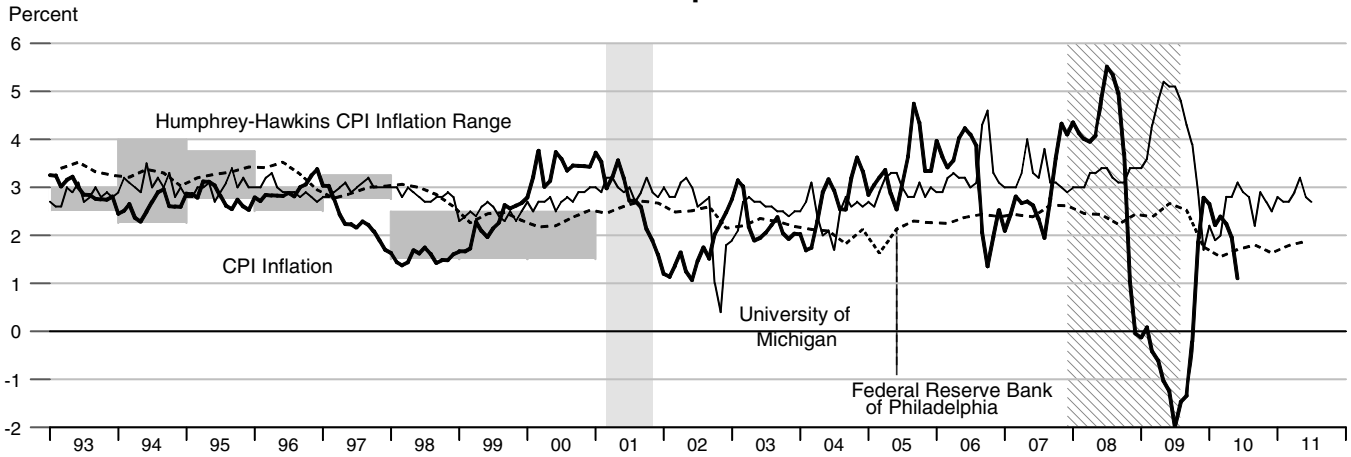


**Net Percentage of Domestic Banks Tightening Standards for Consumer Loans**

Percentage

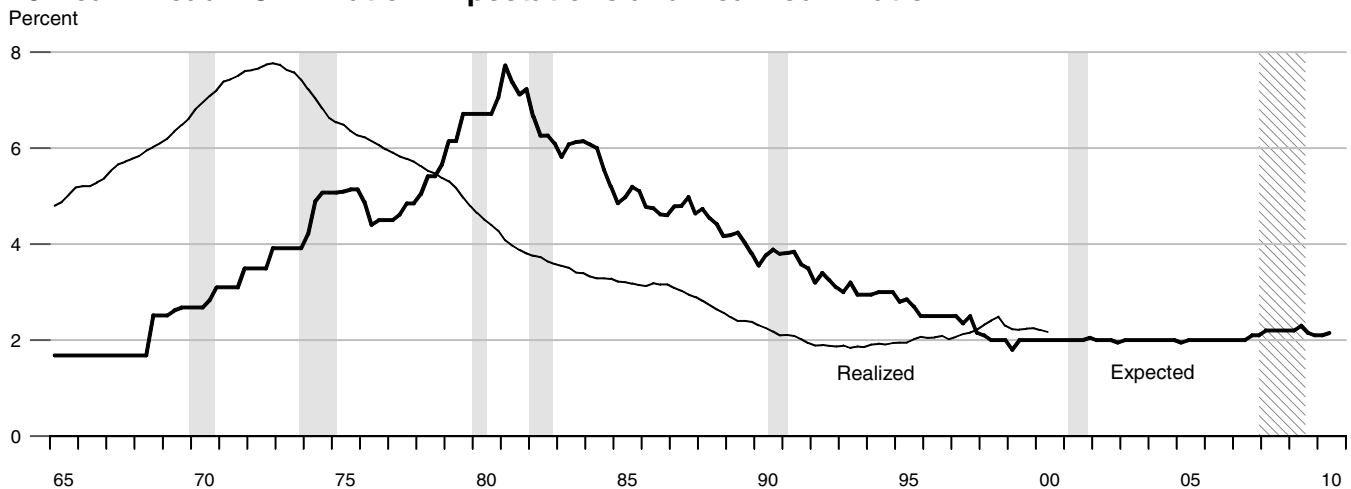


**CPI Inflation and 1-Year-Ahead CPI Inflation Expectations**



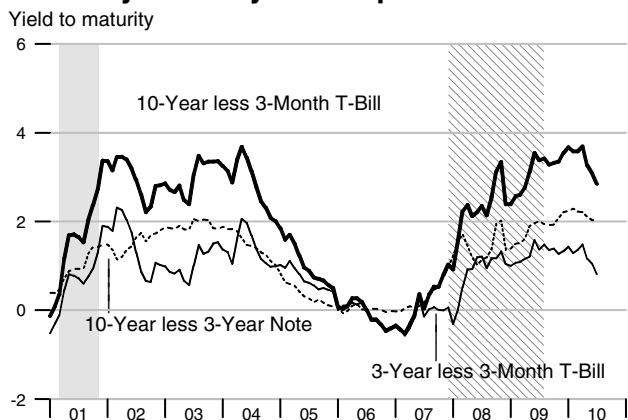
The shaded region shows the Humphrey-Hawkins inflation range. Beginning in January 2000, the Humphrey-Hawkins inflation range was reported using the PCE price index and therefore is not shown on this graph.

**10-Year Ahead PCE Inflation Expectations and Realized Inflation**

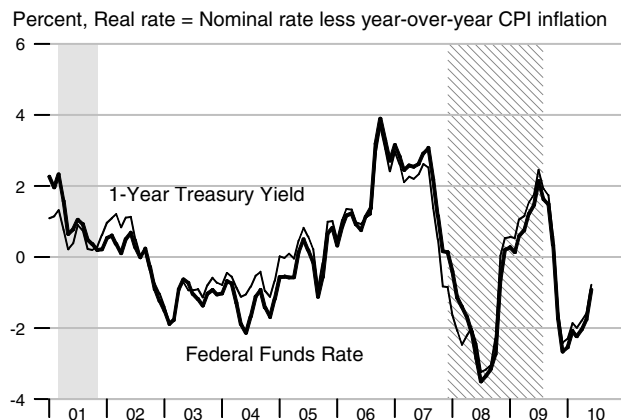


See the notes section for an explanation of the chart.

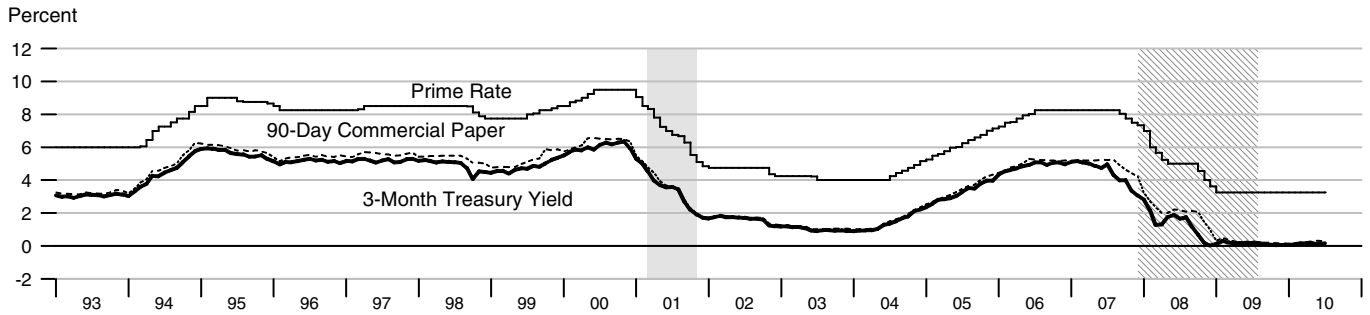
**Treasury Security Yield Spreads**



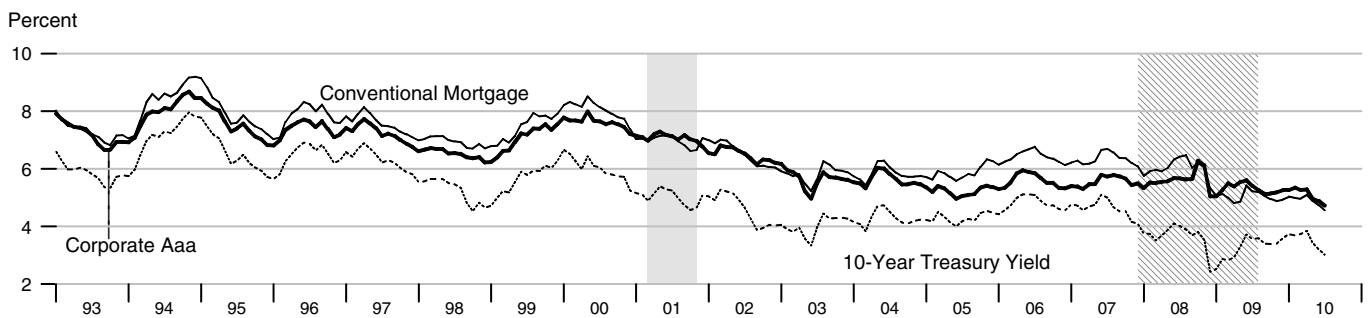
**Real Interest Rates**



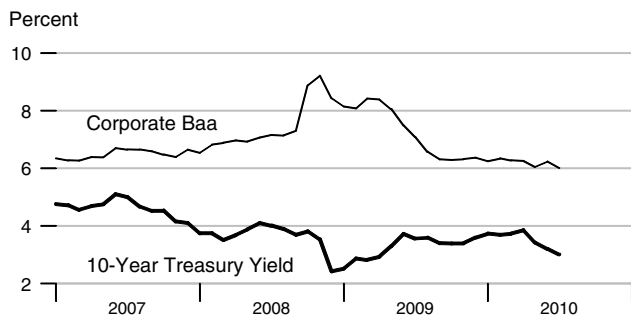
### Short-Term Interest Rates



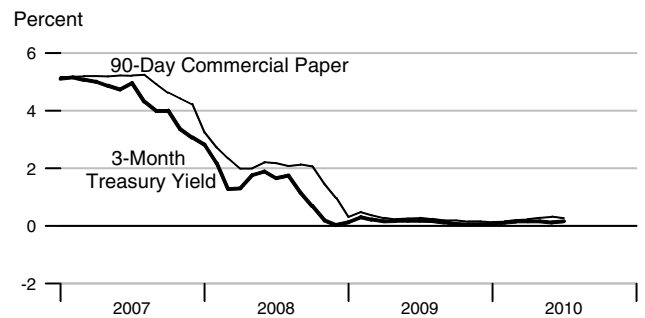
### Long-Term Interest Rates



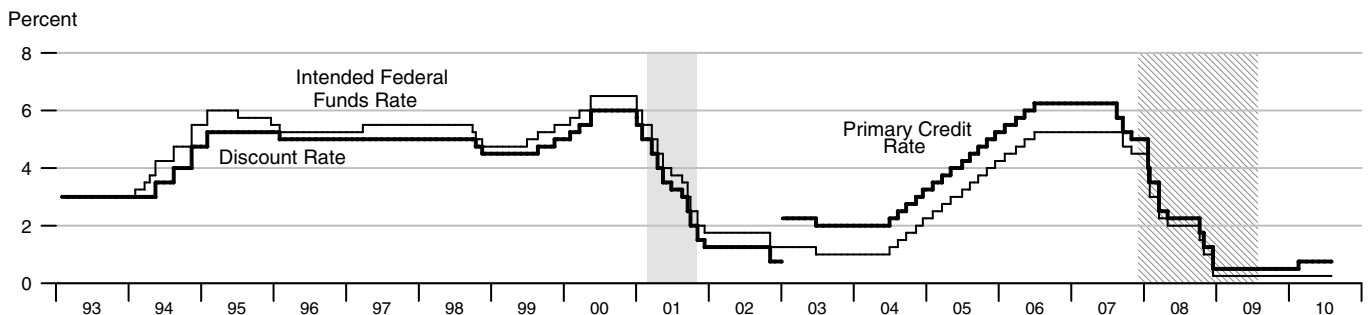
### Long-Term Interest Rates



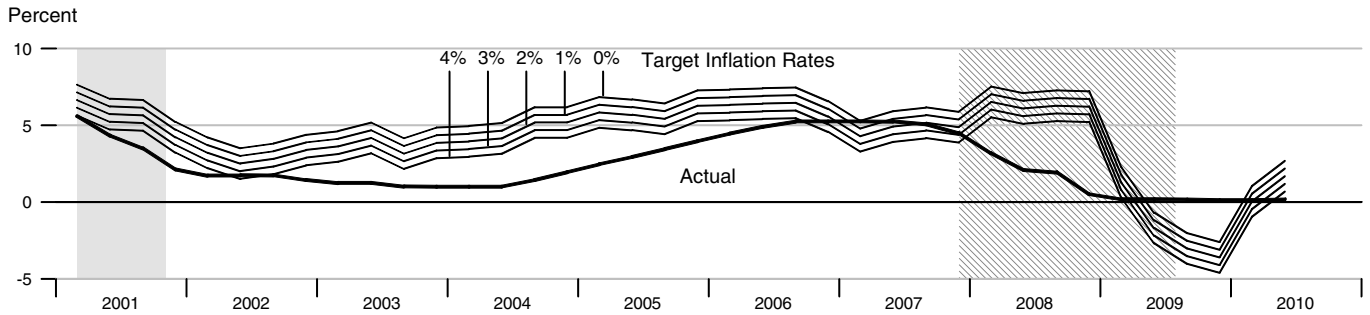
### Short-Term Interest Rates



### FOMC Intended Federal Funds Rate, Discount Rate, and Primary Credit Rate



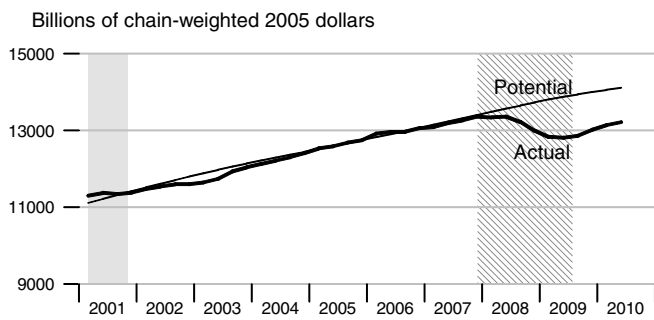
### Federal Funds Rate and Inflation Targets



Calculated federal funds rate is based on Taylor's rule.

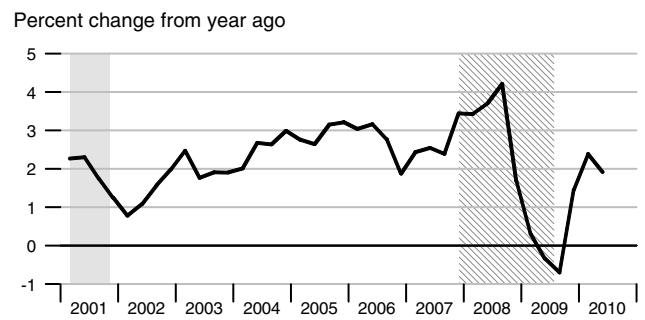
### Components of Taylor's Rule

#### Actual and Potential Real GDP

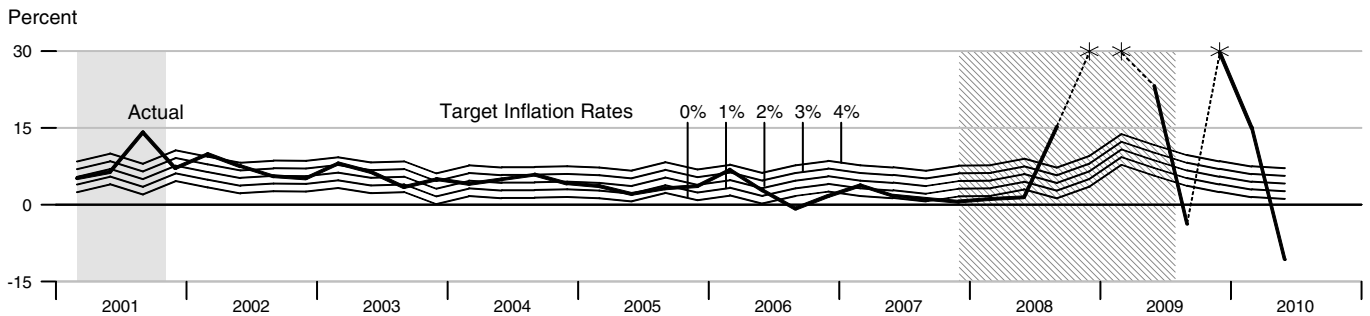


See notes section for further explanation.

#### PCE Inflation



### Monetary Base Growth and Inflation Targets

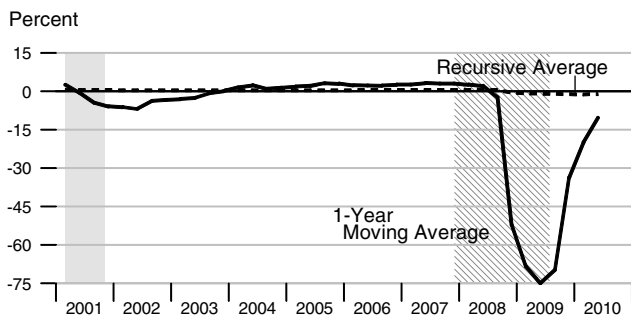


Calculated base growth is based on McCallum's rule. Actual base growth is percent change from the previous quarter.

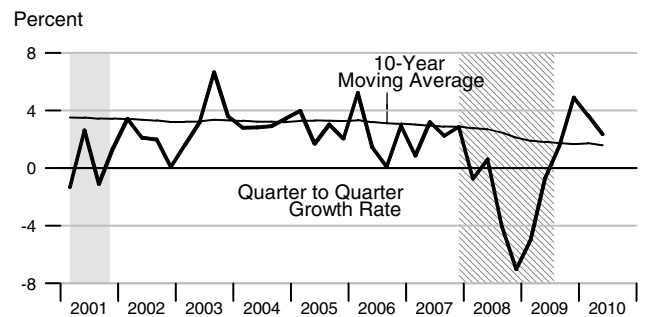
\*Actual values for 2008:Q4, 2009:Q1, and 2009:Q4 are 188.38 percent, 60.77 percent, and 56.51, respectively.

### Components of McCallum's Rule

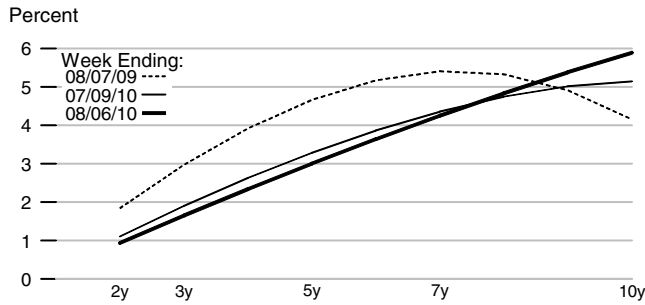
#### Monetary Base Velocity Growth



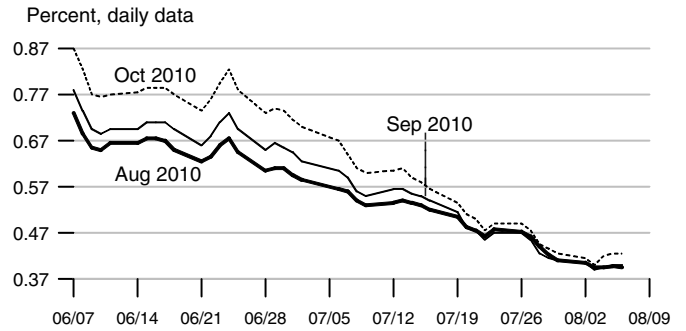
#### Real Output Growth



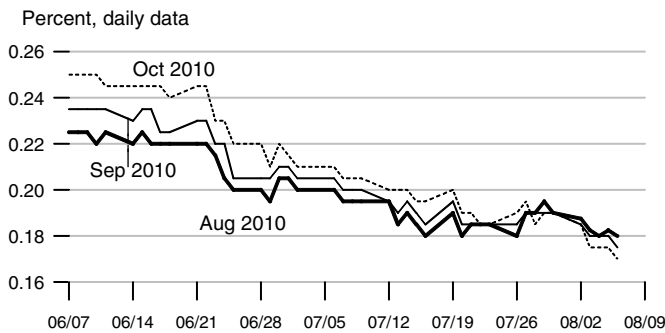
### Implied One-Year Forward Rates



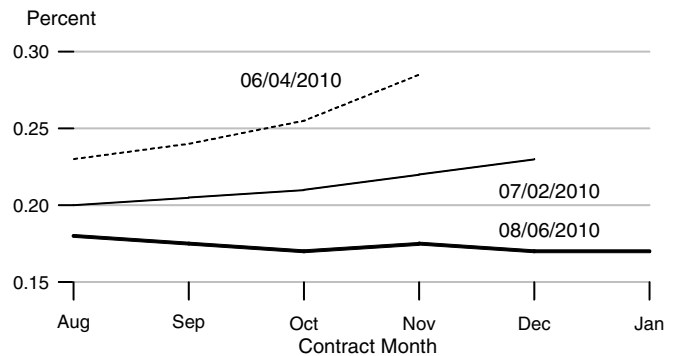
### Rates on 3-Month Eurodollar Futures



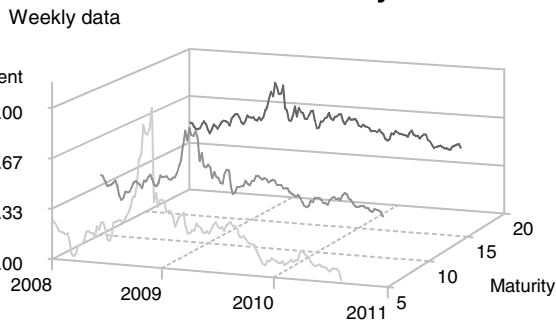
### Rates on Selected Federal Funds Futures Contracts



### Rates on Federal Funds Futures on Selected Dates

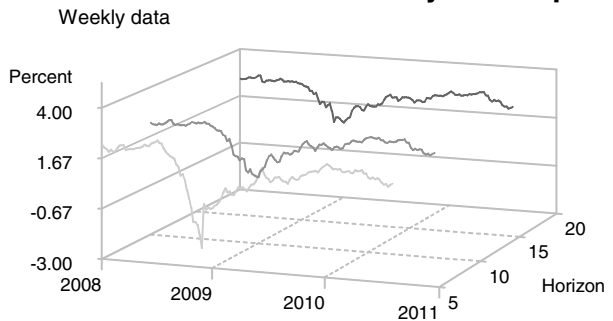


### Inflation-Indexed Treasury Securities



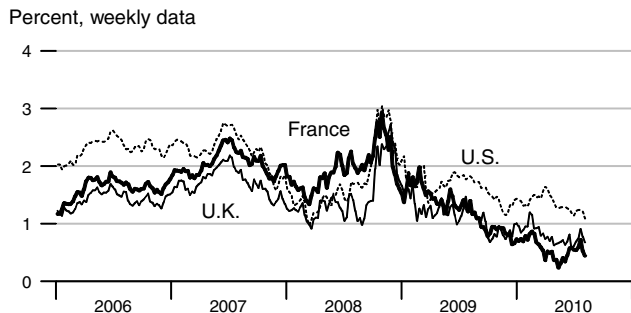
Note: Yields are inflation-indexed constant maturity U.S. Treasury securities

### Inflation-Indexed Treasury Yield Spreads

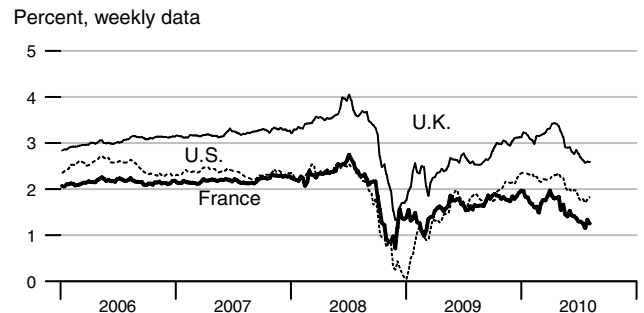


Note: Yield spread is between nominal and inflation-indexed constant maturity U.S. Treasury securities.

### Inflation-Indexed 10-Year Government Notes

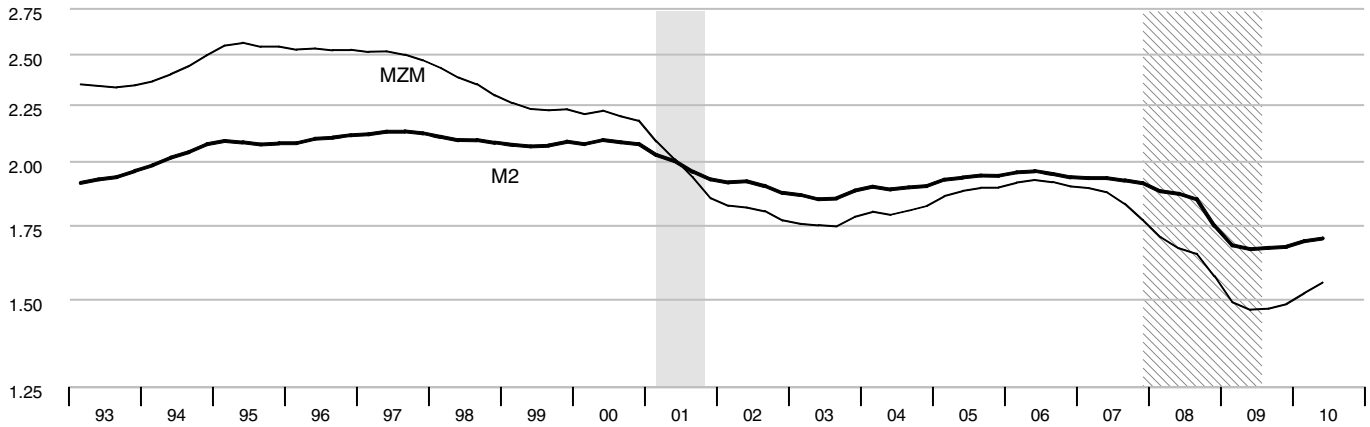


### Inflation-Indexed 10-Year Government Yield Spreads



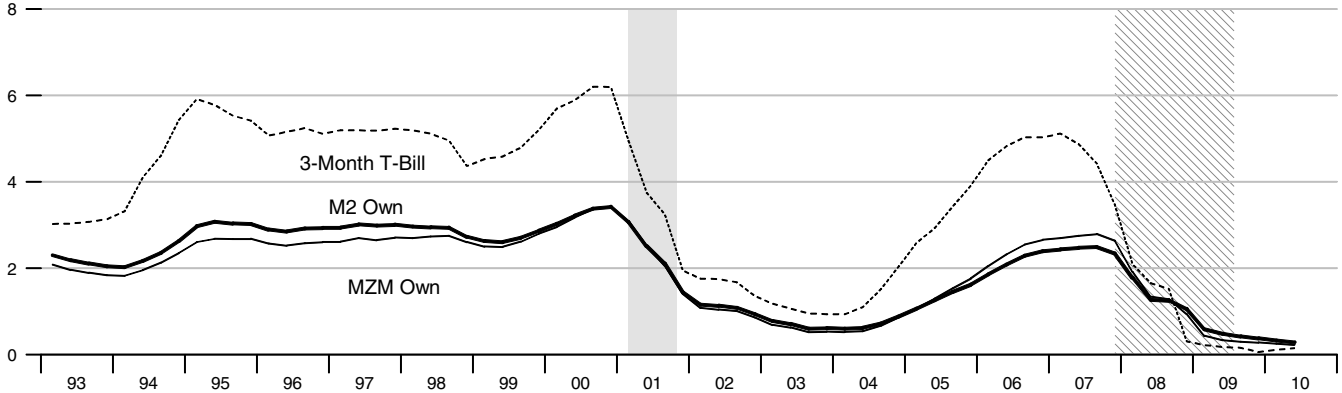
Velocity

Nominal GDP/MZM, Nominal GDP/M2 (Ratio Scale)



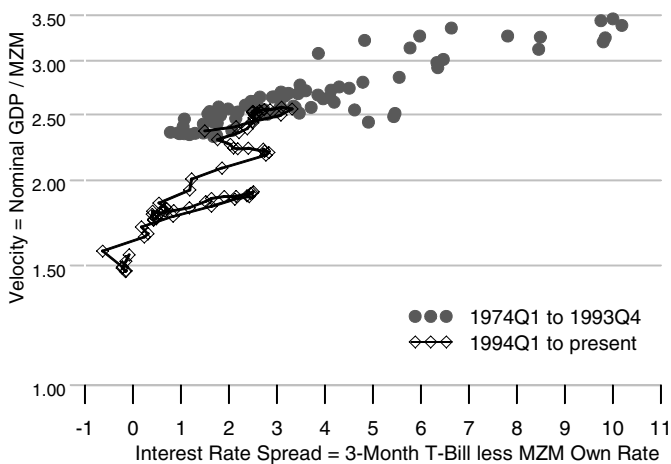
Interest Rates

Percent



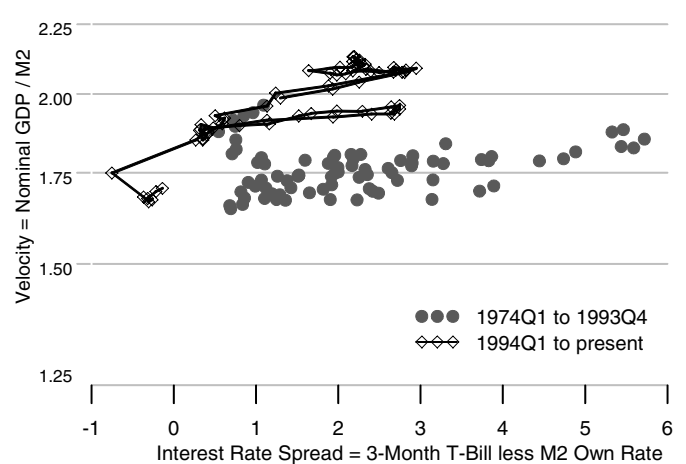
MZM Velocity and Interest Rate Spread

Ratio Scale



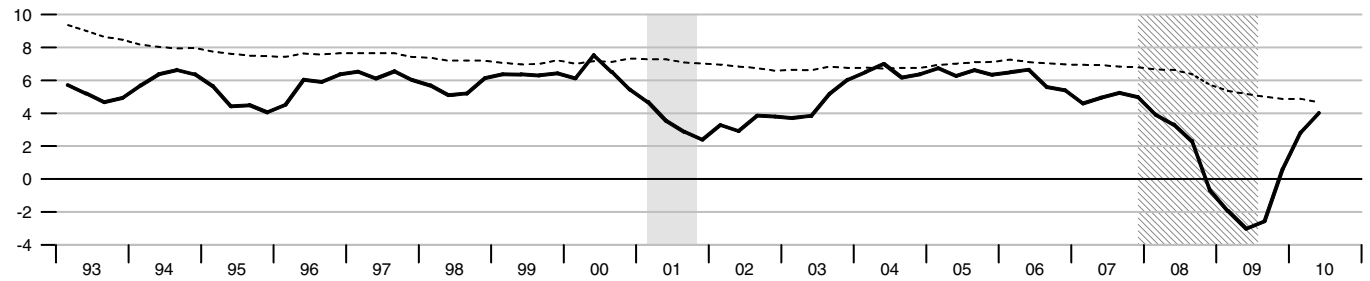
M2 Velocity and Interest Rate Spread

Ratio Scale



### Gross Domestic Product

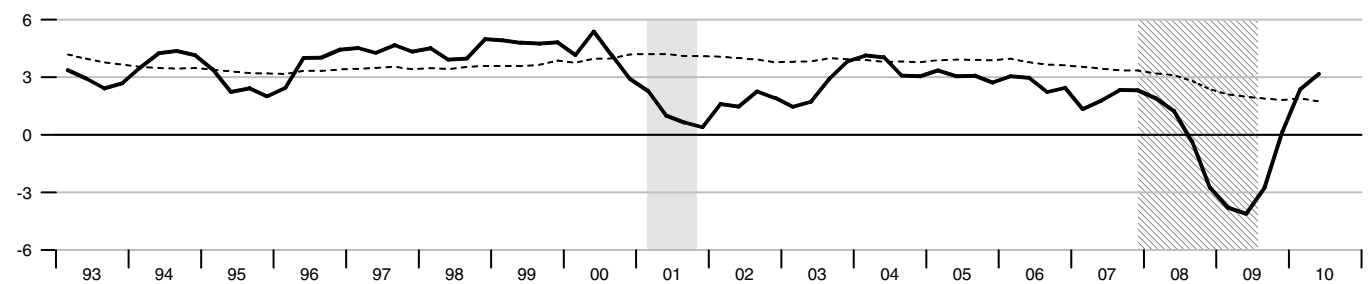
Percent change from year ago



Dashed lines indicate 10-year moving averages.

### Real Gross Domestic Product

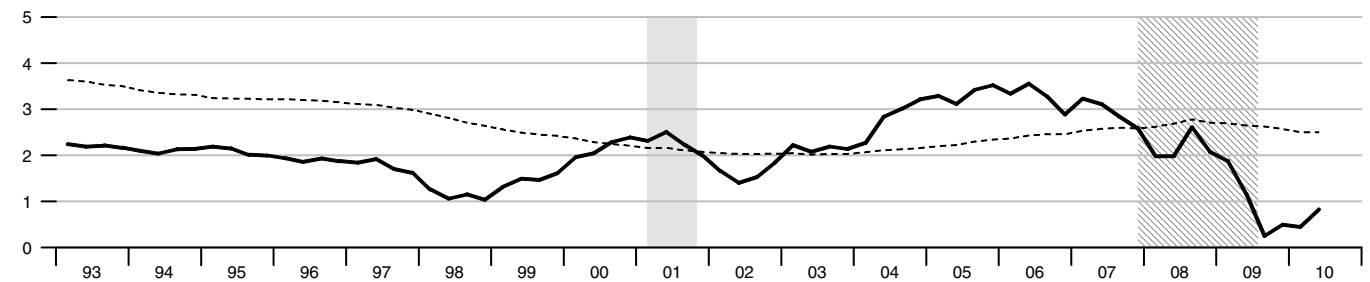
Percent change from year ago



Dashed lines indicate 10-year moving averages.

### Gross Domestic Product Price Index

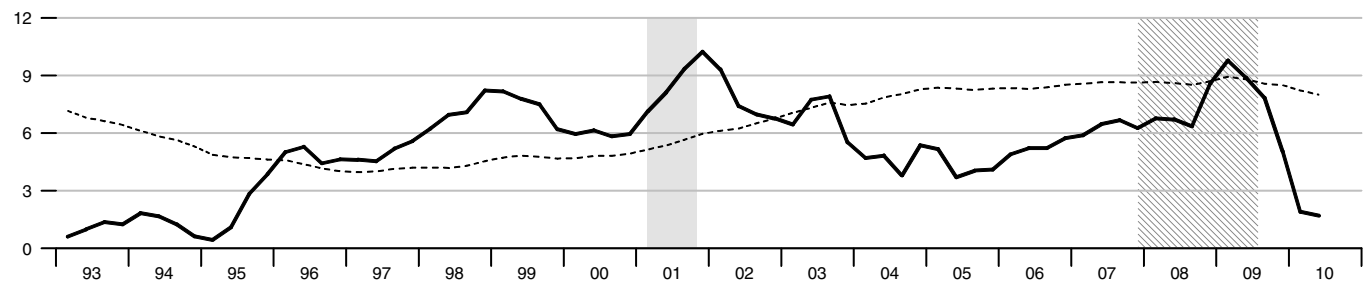
Percent change from year ago



Dashed lines indicate 10-year moving averages.

### M2

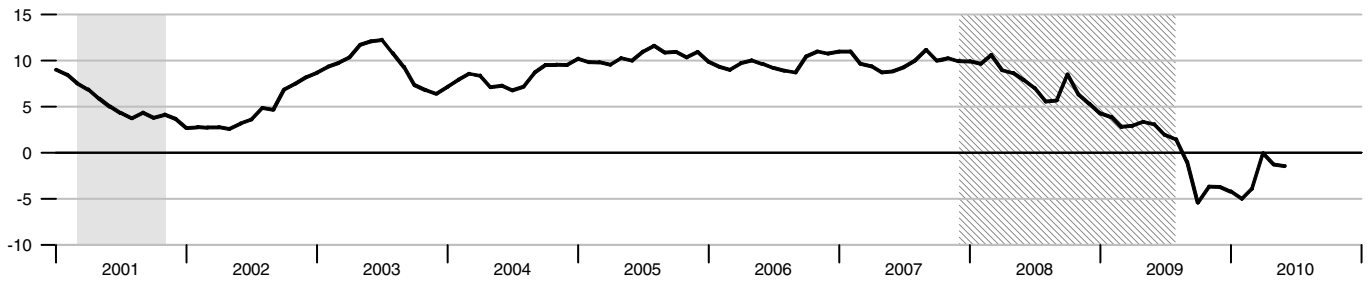
Percent change from year ago



Dashed lines indicate 10-year moving averages.

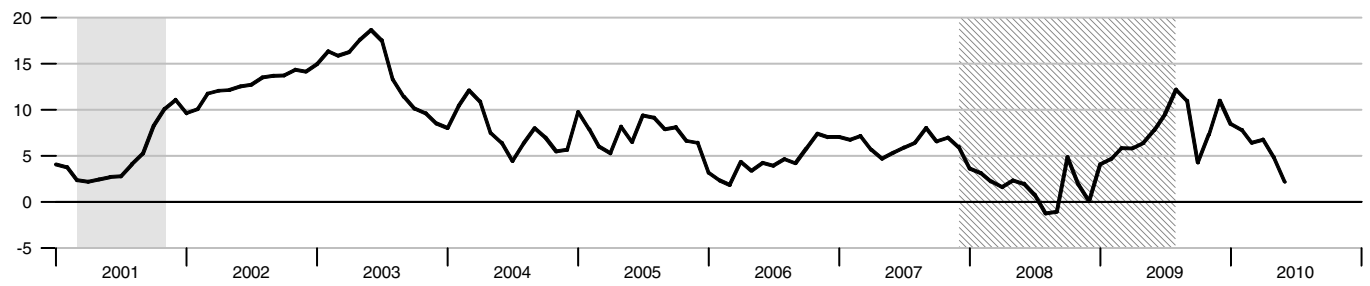
**Bank Credit**

Percent change from year ago



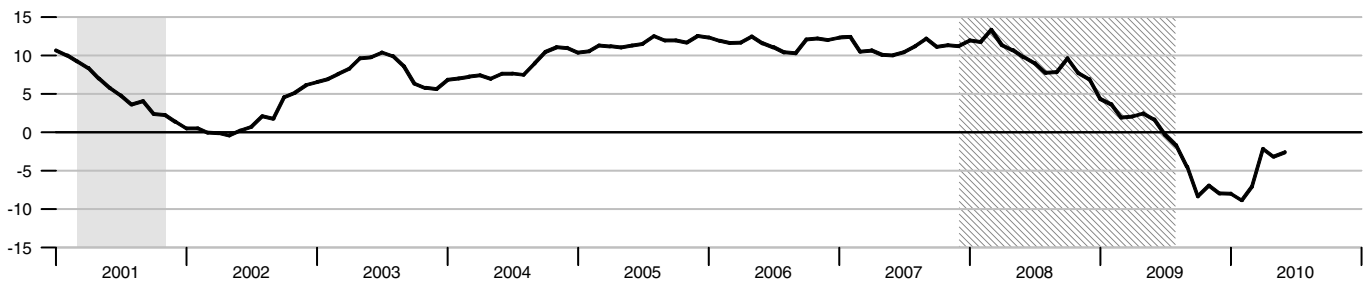
**Investment Securities in Bank Credit at Commercial Banks**

Percent change from year ago



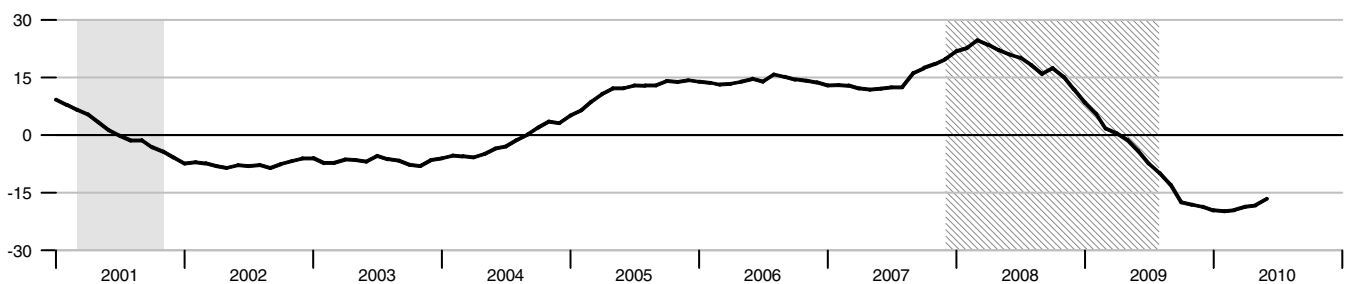
**Total Loans and Leases in Bank Credit at Commercial Banks**

Percent change from year ago

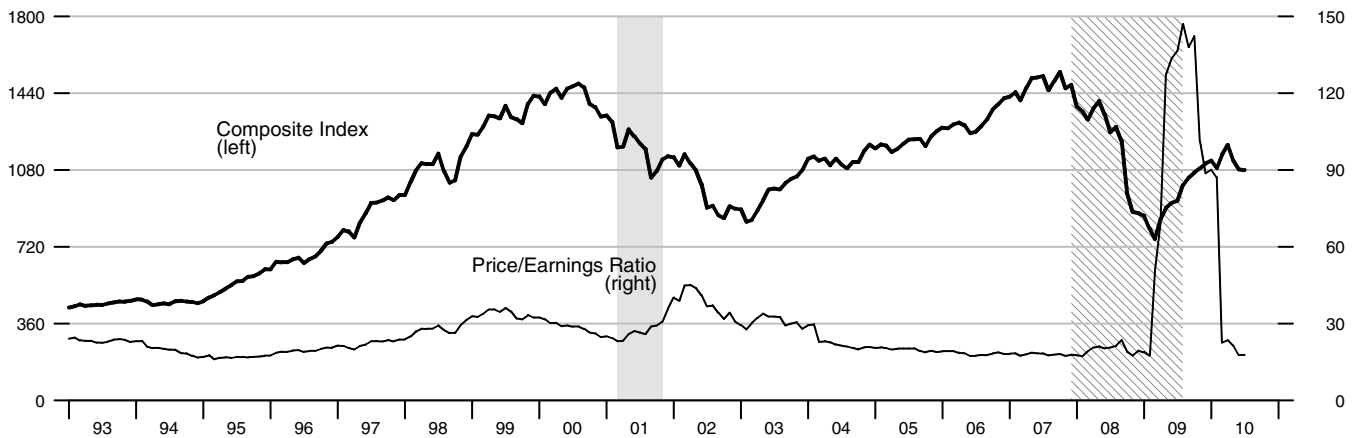


**Commercial and Industrial Loans at Commercial Banks**

Percent change from year ago



### Standard & Poor's 500

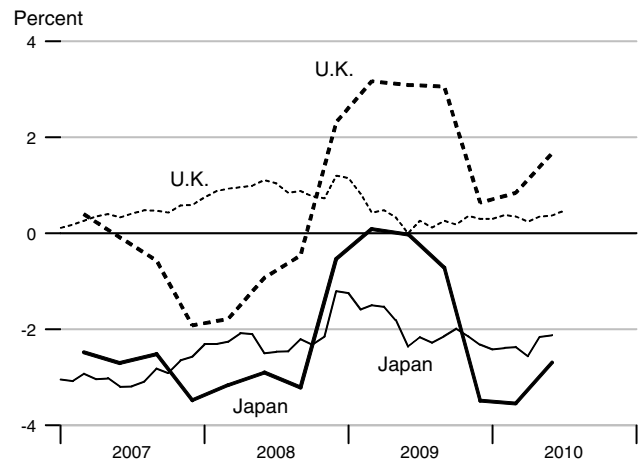
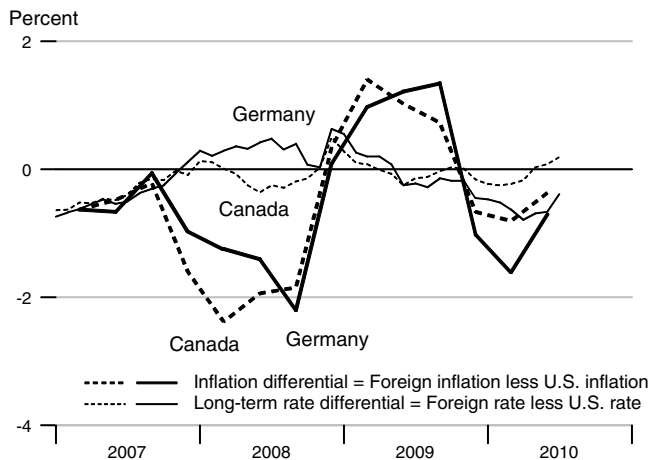


### Recent Inflation and Long-Term Interest Rates

	Consumer Price Inflation Rates				Long-Term Government Bond Rates			
	Percent change from year ago				Percent			
	2009Q3	2009Q4	2010Q1	2010Q2	Apr10	May10	Jun10	Jul10
United States	-1.60	1.46	2.42	1.77	3.85	3.42	3.20	3.01
Canada	-0.87	0.79	1.61	1.40	3.68	3.45	3.28	3.20
France	-0.42	0.36	1.32	1.61	3.40	3.08	3.07	.
Germany	-0.25	0.44	0.81	1.06	3.06	2.73	2.54	2.62
Italy	0.12	0.65	1.29	1.41	4.00	3.99	4.10	4.03
Japan	-2.31	-2.03	-1.12	-0.93	1.29	1.26	1.08	.
United Kingdom	1.46	2.09	3.26	3.44	4.09	3.77	3.57	3.48

\* Copyright ©, 2010, Organisation for Economic Cooperation and Development, OECD Main Economic Indicators (www.oecd.org).

### Inflation and Long-Term Interest Rate Differentials



		Money Stock				Bank	Adjusted		MSI M2**
		M1	MZM	M2	M3*	Credit	Monetary Base	Reserves	
2005		1371.536	6709.684	6524.832	9786.477	7012.652	806.623	96.555	343.539
2006		1374.163	7000.882	6868.752	10270.74	7694.938	835.036	94.909	
2007		1372.079	7635.008	7303.199		8460.781	850.544	94.159	
2008		1432.775	8707.694	7823.088		9123.269	1009.767	232.170	
2009		1634.805	9537.119	8436.943		9191.323	1796.572	944.793	
2008	1	1384.590	8384.246	7618.254		9000.092	856.263	96.115	
	2	1392.557	8664.175	7733.424		9003.683	859.333	94.378	
	3	1423.718	8773.061	7829.293		9075.594	892.762	117.838	
	4	1530.237	9009.295	8111.382		9413.706	1430.712	620.349	
2009	1	1578.272	9413.546	8363.350		9331.745	1663.022	820.691	
	2	1621.078	9550.893	8420.406		9284.243	1763.719	917.109	
	3	1653.103	9585.002	8442.804		9137.324	1747.153	895.408	
	4	1686.768	9599.034	8521.213		9011.981	2012.393	1145.965	
2010	1	1702.927	9497.204	8521.562		8927.923	2089.181	1216.985	
	2	1710.371	9387.966	8563.355		9202.328	2034.267	1158.282	
2008	Jun	1396.836	8711.898	7749.543		9002.435	862.976	93.762	
	Jul	1413.845	8768.068	7801.390		9028.665	870.707	97.012	
	Aug	1398.847	8752.714	7789.624		9032.806	871.469	96.673	
	Sep	1458.462	8798.402	7896.864		9165.311	936.110	159.830	
	Oct	1471.733	8845.564	8012.064		9499.135	1142.155	347.607	
	Nov	1516.921	8971.958	8064.557		9389.305	1480.742	674.073	
	Dec	1602.056	9210.362	8257.526		9352.677	1669.239	839.367	
2009	Jan	1583.474	9342.150	8318.930		9331.390	1730.414	870.183	
	Feb	1573.982	9412.811	8358.887		9352.089	1590.201	758.628	
	Mar	1577.360	9485.677	8412.234		9311.757	1668.452	833.261	
	Apr	1608.534	9472.155	8366.764		9258.241	1787.758	949.349	
	May	1608.536	9579.490	8439.162		9315.180	1799.320	946.195	
	Jun	1646.163	9601.034	8455.293		9279.307	1704.080	855.782	
	Jul	1649.971	9599.330	8445.331		9195.555	1693.690	841.454	
	Aug	1648.483	9560.317	8421.966		9153.588	1728.096	879.570	
	Sep	1660.854	9595.358	8461.114		9062.830	1819.673	965.200	
	Oct	1676.188	9598.647	8493.987		8977.340	1975.377	1122.191	
	Nov	1687.511	9605.793	8525.219		9045.562	2044.519	1182.207	
	Dec	1696.604	9592.662	8544.432		9013.041	2017.284	1133.497	
2010	Jan	1680.771	9522.824	8488.541		8942.124	2010.112	1105.429	
	Feb	1714.843	9528.527	8550.006		8888.816	2150.910	1296.142	
	Mar	1713.166	9440.261	8526.140		8952.828	2106.522	1249.384	
	Apr	1701.706	9349.104	8498.161		9259.936	2044.296	1178.953	
	May	1706.781	9398.970	8580.123		9198.146	2034.542	1149.700	
	Jun	1722.627	9415.824	8611.782		9148.903	2023.962	1146.194	

Note: All values are given in billions of dollars. \*See table of contents for changes to the series.

\*\*We will not update the MSI series until we revise the code to accommodate the discontinuation of M3.

		Federal Funds	Primary Credit Rate	Prime Rate	3-mo CDs	Treasury Yields			Corporate Aaa Bonds	Municipal Aaa Bonds	Conventional Mortgage
						3-mo	3-yr	10-yr			
2005		3.21	4.19	6.19	3.51	3.21	3.93	4.29	5.23	4.28	5.86
2006		4.96	5.96	7.96	5.15	4.85	4.77	4.79	5.59	4.15	6.41
2007		5.02	5.86	8.05	5.27	4.47	4.34	4.63	5.56	4.13	6.34
2008		1.93	2.39	5.09	2.97	1.39	2.24	3.67	5.63	4.58	6.04
2009		0.16	0.50	3.25	0.56	0.15	1.43	3.26	5.31	4.27	5.04
2008	1	3.18	3.67	6.21	3.23	2.09	2.17	3.66	5.46	4.39	5.88
	2	2.09	2.33	5.08	2.76	1.65	2.67	3.89	5.60	4.43	6.09
	3	1.94	2.25	5.00	3.06	1.52	2.63	3.86	5.65	4.50	6.31
	4	0.51	1.31	4.06	2.82	0.30	1.48	3.25	5.82	5.02	5.87
2009	1	0.18	0.50	3.25	1.08	0.22	1.27	2.74	5.27	4.64	5.06
	2	0.18	0.50	3.25	0.62	0.17	1.49	3.31	5.51	4.43	5.03
	3	0.16	0.50	3.25	0.30	0.16	1.56	3.52	5.27	4.11	5.16
	4	0.12	0.50	3.25	0.22	0.06	1.39	3.46	5.20	3.91	4.92
2010	1	0.13	0.61	3.25	0.21	0.11	1.47	3.72	5.29	3.93	5.00
	2	0.19	0.75	3.25	0.42	0.15	1.38	3.49	5.04		4.91
2008	Jul	2.01	2.25	5.00	2.79	1.66	2.87	4.01	5.67	4.44	6.43
	Aug	2.00	2.25	5.00	2.79	1.75	2.70	3.89	5.64	4.44	6.48
	Sep	1.81	2.25	5.00	3.59	1.15	2.32	3.69	5.65	4.61	6.04
	Oct	0.97	1.81	4.56	4.32	0.69	1.86	3.81	6.28	5.05	6.20
	Nov	0.39	1.25	4.00	2.36	0.19	1.51	3.53	6.12	4.83	6.09
	Dec	0.16	0.86	3.61	1.77	0.03	1.07	2.42	5.05	5.17	5.33
2009	Jan	0.15	0.50	3.25	1.02	0.13	1.13	2.52	5.05	4.64	5.06
	Feb	0.22	0.50	3.25	1.16	0.30	1.37	2.87	5.27	4.56	5.13
	Mar	0.18	0.50	3.25	1.07	0.22	1.31	2.82	5.50	4.74	5.00
	Apr	0.15	0.50	3.25	0.89	0.16	1.32	2.93	5.39	4.48	4.81
	May	0.18	0.50	3.25	0.57	0.18	1.39	3.29	5.54	4.26	4.86
	Jun	0.21	0.50	3.25	0.39	0.18	1.76	3.72	5.61	4.56	5.42
	Jul	0.16	0.50	3.25	0.35	0.18	1.55	3.56	5.41	4.36	5.22
	Aug	0.16	0.50	3.25	0.30	0.17	1.65	3.59	5.26	4.17	5.19
	Sep	0.15	0.50	3.25	0.25	0.12	1.48	3.40	5.13	3.81	5.06
	Oct	0.12	0.50	3.25	0.24	0.07	1.46	3.39	5.15	3.85	4.95
	Nov	0.12	0.50	3.25	0.21	0.05	1.32	3.40	5.19	3.99	4.88
	Dec	0.12	0.50	3.25	0.22	0.05	1.38	3.59	5.26	3.89	4.93
2010	Jan	0.11	0.50	3.25	0.20	0.06	1.49	3.73	5.26	3.96	5.03
	Feb	0.13	0.59	3.25	0.19	0.11	1.40	3.69	5.35	3.91	4.99
	Mar	0.16	0.75	3.25	0.23	0.15	1.51	3.73	5.27	3.91	4.97
	Apr	0.20	0.75	3.25	0.30	0.16	1.64	3.85	5.29	3.95	5.10
	May	0.20	0.75	3.25	0.45	0.16	1.32	3.42	4.96	3.75	4.89
	Jun	0.18	0.75	3.25	0.52	0.12	1.17	3.20	4.88		4.74
	Jul	0.18	0.75	3.25	0.41	0.16	0.98	3.01	4.72		4.56

Note: All values are given as a percent at an annual rate.

		M1	MZM	M2	M3*	
<b>Percent change at an annual rate</b>						
2005		2.04	2.11	4.25	5.97	
2006		0.19	4.34	5.27	4.95	
2007		-0.15	9.06	6.32		
2008		4.42	14.05	7.12		
2009		14.10	9.53	7.85		
<hr/>						
2008	1	2.63	15.73	7.90		
	2	2.30	13.35	6.05		
	3	8.95	5.03	4.96		
	4	29.93	10.77	14.41		
2009	1	12.56	17.95	12.43		
	2	10.85	5.84	2.73		
	3	7.90	1.43	1.06		
	4	8.15	0.59	3.71		
2010	1	3.83	-4.24	0.02		
	2	1.75	-4.60	1.96		
<hr/>						
2008	Jun	5.79	6.35	1.93		
	Jul	14.61	7.74	8.03		
	Aug	-12.73	-2.10	-1.81		
	Sep	51.14	6.26	16.52		
	Oct	10.92	6.43	17.51		
	Nov	36.84	17.15	7.86		
	Dec	67.35	31.89	28.71		
	2009	Jan	-13.92	17.17	8.92	
		Feb	-7.19	9.08	5.76	
		Mar	2.58	9.29	7.66	
		Apr	23.72	-1.71	-6.49	
		May	0.00	13.60	10.38	
Jun		28.07	2.70	2.29		
Jul		2.78	-0.21	-1.41		
Aug		-1.08	-4.88	-3.32		
Sep		9.01	4.40	5.58		
Oct		11.08	0.41	4.66		
Nov		8.11	0.89	4.41		
Dec		6.47	-1.64	2.70		
2010	Jan	-11.20	-8.74	-7.85		
	Feb	24.33	0.72	8.69		
	Mar	-1.17	-11.12	-3.35		
	Apr	-8.03	-11.59	-3.94		
	May	3.58	6.40	11.57		
	Jun	11.14	2.15	4.43		

\*See table of contents for changes to the series.

## Definitions

**M1:** The sum of currency held outside the vaults of depository institutions, Federal Reserve Banks, and the U.S. Treasury; travelers checks; and demand and other checkable deposits issued by financial institutions (except demand deposits due to the Treasury and depository institutions), minus cash items in process of collection and Federal Reserve float.

**MZM (money, zero maturity):** M2 minus small-denomination time deposits, plus institutional money market mutual funds (that is, those included in M3 but excluded from M2). The label MZM was coined by William Poole (1991); the aggregate itself was proposed earlier by Motley (1988).

**M2:** M1 plus savings deposits (including money market deposit accounts) and small-denomination (under \$100,000) time deposits issued by financial institutions; and shares in retail money market mutual funds (funds with initial investments under \$50,000), net of retirement accounts.

**M3:** M2 plus large-denomination (\$100,000 or more) time deposits; repurchase agreements issued by depository institutions; Eurodollar deposits, specifically, dollar-denominated deposits due to nonbank U.S. addresses held at foreign offices of U.S. banks worldwide and all banking offices in Canada and the United Kingdom; and institutional money market mutual funds (funds with initial investments of \$50,000 or more).

**Bank Credit:** All loans, leases, and securities held by commercial banks.

**Domestic Nonfinancial Debt:** Total credit market liabilities of the U.S. Treasury, federally sponsored agencies, state and local governments, households, and nonfinancial firms. End-of-period basis.

**Adjusted Monetary Base:** The sum of currency in circulation outside Federal Reserve Banks and the U.S. Treasury, deposits of depository financial institutions at Federal Reserve Banks, and an adjustment for the effects of changes in statutory reserve requirements on the quantity of base money held by depositories. This series is a spliced chain index; see Anderson and Rasche (1996a,b, 2001, 2003).

**Adjusted Reserves:** The sum of vault cash and Federal Reserve Bank deposits held by depository institutions and an adjustment for the effects of changes in statutory reserve requirements on the quantity of base money held by depositories. This spliced chain index is numerically larger than the Board of Governors' measure, which excludes vault cash not used to satisfy statutory reserve requirements and Federal Reserve Bank deposits used to satisfy required clearing balance contracts; see Anderson and Rasche (1996a, 2001, 2003).

**Monetary Services Index:** An index that measures the flow of monetary services received by households and firms from their holdings of liquid assets; see Anderson, Jones, and Nesmith (1997). Indexes are shown for the assets included in M2, with additional data at [research.stlouisfed.org/msi/index.html](http://research.stlouisfed.org/msi/index.html).

**Note:** M1, M2, M3, Bank Credit, and Domestic Nonfinancial Debt are constructed and published by the Board of Governors of the Federal Reserve System. For details, see *Statistical Supplement to the Federal Reserve Bulletin*, tables 1.21 and 1.26. MZM, Adjusted Monetary Base, Adjusted Reserves, and Monetary Services Index are constructed and published by the Research Division of the Federal Reserve Bank of St. Louis.

## Notes

*Page 3:* Readers are cautioned that, since early 1994, the level and growth of M1 have been depressed by retail sweep programs that reclassify transactions deposits (demand deposits and other checkable deposits) as savings deposits overnight, thereby reducing banks' required reserves; see Anderson and Rasche (2001) and [research.stlouisfed.org/aggreg/swdata.html](http://research.stlouisfed.org/aggreg/swdata.html). **Primary Credit Rate**, **Discount Rate**, and **Intended Federal Funds Rate** shown in the chart **Reserve Market Rates** are plotted as of the date of the change, while the **Effective Federal Funds Rate** is plotted as of the end of the month. Interest rates in the table are monthly averages from the Board of Governors H.15 Statistical Release. The **Treasury Yield Curve** and **Real Treasury Yield Curve** show constant maturity yields calculated by the U.S. Treasury for securities 5, 7, 10, and 20 years to maturity. **Inflation-Indexed Treasury Yield Spreads** are a measure of inflation compensation at those horizons, and it is simply the

nominal constant maturity yield less the real constant maturity yield. Daily data and descriptions are available at [research.stlouisfed.org/fred2/](http://research.stlouisfed.org/fred2/). See also *Statistical Supplement to the Federal Reserve Bulletin*, table 1.35. The 30-year constant maturity series was discontinued by the Treasury as of February 18, 2002.

*Page 5:* **Checkable Deposits** is the sum of demand and other checkable deposits. **Savings Deposits** is the sum of money market deposit accounts and passbook and statement savings. **Time Deposits** have a minimum initial maturity of 7 days. **Retail Money Market Mutual Funds** are included in M2. **Institutional** money market funds are not included in M2.

*Page 6:* **Excess Reserves plus RCB (Required Clearing Balance) Contracts** equals the amount of deposits at Federal Reserve Banks held by depository institutions but not applied to satisfy statutory reserve requirements. (This measure excludes the vault cash held by depository institutions that is not applied to satisfy statutory reserve requirements.) **Consumer Credit** includes most short- and intermediate-term credit extended to individuals. See *Statistical Supplement to the Federal Reserve Bulletin*, table 1.55.

*Page 7:* Data are reported in the Senior Loan Officer Opinion Survey on Bank Lending Practices.

*Page 8:* **Inflation Expectations** measures include the quarterly Federal Reserve Bank of Philadelphia *Survey of Professional Forecasters*, the monthly University of Michigan Survey Research Center's *Surveys of Consumers*, and the annual Federal Open Market Committee (FOMC) range as reported to the Congress in the February testimony that accompanies the Monetary Policy Report to the Congress. Beginning February 2000, the FOMC began using the personal consumption expenditures (PCE) price index to report its inflation range; the FOMC then switched to the PCE chain-type price index excluding food and energy prices ("core") beginning July 2004. Accordingly, neither are shown on this graph. **CPI Inflation** is the percentage change from a year ago in the consumer price index for all urban consumers. **Real Interest Rates** are ex post measures, equal to nominal rates minus year-over-year CPI inflation.

From 1991 to the present the source of the long-term PCE inflation expectations data is the Federal Reserve Bank of Philadelphia's *Survey of Professional Forecasters*. Prior to 1991, the data were obtained from the Board of Governors of the Federal Reserve System. Realized (actual) inflation is the annualized rate of change for the 40-quarter period that corresponds to the forecast horizon (the expectations measure). For example, in 1965:Q1, annualized PCE inflation over the next 40 quarters was expected to average 1.7 percent. In actuality, the average annualized rate of change measured 4.8 percent from 1965:Q1 to 1975:Q1. Thus, the vertical distance between the two lines in the chart at any point is the forecast error.

*Page 9:* **FOMC Intended Federal Funds Rate** is the level (or midpoint of the range, if applicable) of the federal funds rate that the staff of the FOMC expected to be consistent with the desired degree of pressure on bank reserve positions. In recent years, the FOMC has set an explicit target for the federal funds rate.

*Page 10:* **Federal Funds Rate and Inflation Targets** shows the observed federal funds rate, quarterly, and the level of the funds rate implied by applying Taylor's (1993) equation

$$f_t^* = 2.5 + \pi_{t-1} + (\pi_{t-1} - \pi^*)/2 + 100 \times (y_{t-1} - y_{t-1}^P)/2$$

to five alternative target inflation rates,  $\pi^* = 0, 1, 2, 3, 4$  percent, where  $f_t^*$  is the implied federal funds rate,  $\pi_{t-1}$  is the previous period's inflation rate (PCE) measured on a year-over-year basis,  $y_{t-1}$  is the log of the previous period's level of real gross domestic product (GDP), and  $y_{t-1}^P$  is the log of an estimate of the previous period's level of potential output. **Potential Real GDP** is estimated by the Congressional Budget Office (CBO).

**Monetary Base Growth and Inflation Targets** shows the quarterly growth of the adjusted monetary base implied by applying McCallum's (2000, p. 52) equation

$$\Delta b_t = \Delta x_t^* - \Delta v_t^a + \lambda (\Delta x_t^* - \Delta x_{t-1}),$$

$$\Delta x_t^* = \pi^* + \Delta y_t^*$$

to five alternative target inflation rates,  $\pi^* = 0, 1, 2, 3, 4$  percent, where  $\Delta b_t$  is the implied growth rate of the adjusted monetary base,  $\Delta y_t^*$  is the 10-year

moving average growth in real GDP,  $\Delta v_t^\alpha$  is the average base velocity growth (calculated recursively),  $\Delta x_{t-1}$  is the lag growth rate of nominal GDP, and  $\lambda = 0.5$ .

**Page 11: Implied One-Year Forward Rates** are calculated by this Bank from Treasury constant maturity yields. Yields to maturity,  $R(m)$ , for securities with  $m = 1, \dots, 10$  years to maturity are obtained by linear interpolation between reported yields. These yields are smoothed by fitting the regression suggested by Nelson and Siegel (1987),

$$R(m) = a_0 + (a_1 + a_2)(1 - e^{-m/50})/(m/50) - a_2 \times e^{-m/50},$$

and forward rates are calculated from these smoothed yields using equation (a) in table 13.1 of Shiller (1990),

$$f(m) = [D(m)R(m) - D(m-1)] / [D(m) - D(m-1)],$$

where duration is approximated as  $D(m) = (1 - e^{-R(m) \times m})/R(m)$ . These rates are linear approximations to the true instantaneous forward rates; see Shiller (1990). For a discussion of the use of forward rates as indicators of inflation expectations, see Sharpe (1997). **Rates on 3-Month Eurodollar Futures and Rates on Selected Federal Funds Futures Contracts** trace through time the yield on three specific contracts. **Rates on Federal Funds Futures on Selected Dates** displays a single day's snapshot of yields for contracts expiring in the months shown on the horizontal axis. **Inflation-Indexed Treasury Securities and Yield Spreads** are those plotted on page 3. **Inflation-Indexed 10-Year Government Notes** shows the yield of an inflation-indexed note that is scheduled to mature in approximately (but not greater than) 10 years. The current French note has a maturity date of 7/25/2015, the current U.K. note has a maturity date of 4/16/2020, and the current U.S. note has a maturity date of 5/15/2020. **Inflation-Indexed Treasury Yield Spreads and Inflation-Indexed 10-Year Government Yield Spreads** equal the difference between the yields on the most recently issued inflation-indexed securities and the unadjusted security yields of similar maturity.

**Page 12: Velocity** (for MZM and M2) equals the ratio of GDP, measured in current dollars, to the level of the monetary aggregate. **MZM and M2 Own Rates** are weighted averages of the rates received by households and firms on the assets included in the aggregates. Prior to 1982, the 3-month T-bill rates are secondary market yields. From 1982 forward, rates are 3-month constant maturity yields.

**Page 13: Real Gross Domestic Product** is GDP as measured in chained 2000 dollars. The **Gross Domestic Product Price Index** is the implicit price deflator for GDP, which is defined by the Bureau of Economic Analysis, U.S. Department of Commerce, as the ratio of GDP measured in current dollars to GDP measured in chained 2005 dollars.

**Page 14: Investment Securities** are all securities held by commercial banks in both investment and trading accounts.

**Page 15: Inflation Rate Differentials** are the differences between the foreign consumer price inflation rates and year-over-year changes in the U.S. all-items Consumer Price Index.

**Page 17: Treasury Yields** are Treasury constant maturities as reported in the Board of Governors of the Federal Reserve System's H.15 release.

## Sources

*Agence France Trésor*: French note yields.

*Bank of Canada*: Canadian note yields.

*Bank of England*: U.K. note yields.

*Board of Governors of the Federal Reserve System*:

Monetary aggregates and components: H.6 release. Bank credit and components: H.8 release. Consumer credit: G.19 release. Required reserves, excess reserves, clearing balance contracts, and discount window borrowing: H.4.1 and H.3 releases. Interest rates: H.15 release. Nonfinancial commercial paper: Board of Governors website. Nonfinancial debt: Z.1 release. M2 own rate. Senior Loan Officer Opinion Survey on Bank Lending Practices.

*Bureau of Economic Analysis*: GDP.

*Bureau of Labor Statistics*: CPI.

*Chicago Board of Trade*: Federal funds futures contract.

*Chicago Mercantile Exchange*: Eurodollar futures.

*Congressional Budget Office*: Potential real GDP.

*Federal Reserve Bank of Philadelphia*: Survey of Professional Forecasters inflation expectations.

*Federal Reserve Bank of St. Louis*: Adjusted monetary base and adjusted reserves, monetary services index, MZM own rate, one-year forward rates.

*Organization for Economic Cooperation and Development*: International interest and inflation rates.

*Standard & Poor's*: Stock price-earnings ratio, stock price composite index.

*University of Michigan Survey Research Center*: Median expected price change.

*U.S. Department of the Treasury*: U.S. security yields.

## References

Anderson, Richard G. and Robert H. Rasche (1996a). "A Revised Measure of the St. Louis Adjusted Monetary Base," *Federal Reserve Bank of St. Louis Review*, March/April, 78(2), pp. 3-13.\*

\_\_\_\_ and \_\_\_\_ (1996b). "Measuring the Adjusted Monetary Base in an Era of Financial Change," *Federal Reserve Bank of St. Louis Review*, November/December, 78(6), pp. 3-37.\*

\_\_\_\_ and \_\_\_\_ (2001). "Retail Sweep Programs and Bank Reserves, 1994-1999," *Federal Reserve Bank of St. Louis Review*, January/February, 83(1), pp. 51-72.\*

\_\_\_\_ and \_\_\_\_ , with Jeffrey Loesel (2003). "A Reconstruction of the Federal Reserve Bank of St. Louis Adjusted Monetary Base and Reserves," *Federal Reserve Bank of St. Louis Review*, September/October, 85(5), pp. 39-70.\*

\_\_\_\_ , Barry E. Jones and Travis D. Nesmith (1997). "Special Report: The Monetary Services Indexes Project of the Federal Reserve Bank of St. Louis," *Federal Reserve Bank of St. Louis Review*, January/February, 79(1), pp. 31-82.\*

McCallum, Bennett T. (2000). "Alternative Monetary Policy Rules: A Comparison with Historical Settings for the United States, the United Kingdom, and Japan," *Federal Reserve Bank of Richmond Economic Quarterly*, vol. 86/1, Winter.

Motley, Brian (1988). "Should M2 Be Redefined?" *Federal Reserve Bank of San Francisco Economic Review*, Winter, pp. 33-51.

Nelson, Charles R. and Andrew F. Siegel (1987). "Parsimonious Modeling of Yield Curves," *Journal of Business*, October, pp. 473-89.

Poole, William (1991). Statement before the Subcommittee on Domestic Monetary Policy of the Committee on Banking, Finance and Urban Affairs, U.S. House of Representatives, November 6, 1991. Government Printing Office, Serial No. 102-82.

Sharpe, William F. (1997). *Macro-Investment Analysis*, on-line textbook available at [www.stanford.edu/~wfsarpe/mia/mia.htm](http://www.stanford.edu/~wfsarpe/mia/mia.htm).

Shiller, Robert (1990). "The Term Structure of Interest Rates," *Handbook of Monetary Economics*, vol. 1, B. Friedman and F. Hahn, eds., pp. 627-722.

Taylor, John B. (1993). "Discretion versus Policy Rules in Practice," *Carnegie-Rochester Conference Series on Public Policy*, vol. 39, pp. 195-214.

**Note:** \*Available on the Internet at [research.stlouisfed.org/publications/review/](http://research.stlouisfed.org/publications/review/).