

The LIBOR-OIS Spread as a Summary Indicator

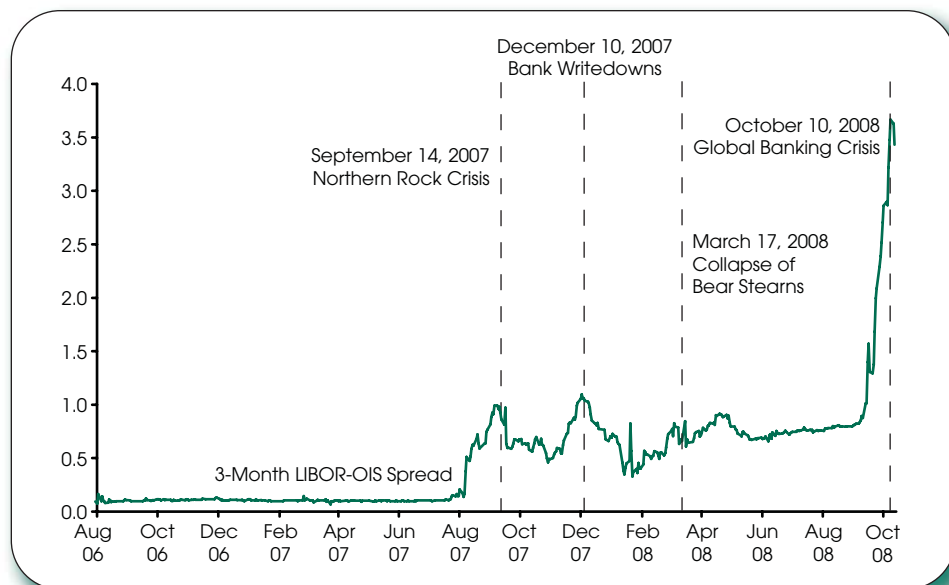
The LIBOR-OIS spread has been a closely watched barometer of distress in money markets for more than a year. The 3-month London Interbank Offered Rate (LIBOR) is the interest rate at which banks borrow unsecured funds from other banks in the London wholesale money market for a period of 3 months. Alternatively, if a bank enters into an overnight indexed swap (OIS), it is entitled to receive a fixed rate of interest on a notional amount called the OIS rate. In exchange, the bank agrees to pay a (compound) interest payment on the notional amount to be determined by a reference floating rate (in the United States, this is the effective federal funds rate) to the counterparty at maturity. For example, suppose the 3-month OIS rate is 2 percent. If the geometric average of the annualized effective federal funds rate for the 3-month period is 1.91 percent, there will be a net cash inflow of \$2,250 on a principal amount of \$10 million $[(2 \text{ percent} - 1.91 \text{ percent}) \times 3/12 \times \$10 \text{ million} = \$2,250]$ to the bank from its counterparty.

A bank borrowing at the 3-month LIBOR rate of 2.10 percent that enters into a swap to receive at the 3-month OIS rate of 2 percent has a borrowing cost equal to the effective federal funds rate plus 10 basis points. Entering into the OIS exposes the bank to future fluctuations in the reference rate. However, the bank can guarantee itself longer-term funding while still paying close to the overnight rate. Because the alternative would be rolling over the funds on a daily basis at changing overnight rates, banks are willing to pay a premium. This is reflected in the LIBOR-OIS spread (defined as the difference between the LIBOR rate and the OIS rate) shown in the chart. In times of stress, the LIBOR, referencing a cash instrument, reflects both credit and liquidity risk,¹ but the OIS has little exposure to default risk because these contracts do not involve any initial cash flows. The OIS rate is therefore an accurate measure of investor expectations of the effective federal funds rate (and hence the Fed's target) over the term of the swap, whereas LIBOR reflects credit risk and the expectation on future overnight rates.

Before the onset of the turmoil in the credit markets in August 2007, the LIBOR-OIS spread was around 10 basis points. However, in just over a month, the spread rose to 85 basis points on September 14, 2007, when the Bank of England announced emergency funding to rescue the troubled Northern Rock, one of the U.K.'s largest mortgage lenders. The spread reached its all-time high at 108 basis points on December 6, 2007. Around the same time, large investment banks such as UBS and Lehman Brothers announced huge write-downs. On March 17, 2008, the collapse of Bear Stearns led to an 83-basis-point spread, a 19-basis-point increase from the previous trading day. In the latest illiquidity wave following the failure of Lehman Brothers, the spread was 365 basis points (as of October 10, 2008). In short, the LIBOR-OIS spread has been the summary indicator showing the "illiquidity waves" that severely impaired money markets in 2007 and 2008.

—Rajdeep Sengupta and Yu Man Tam

¹ *Liquidity risk* is the risk that a bank could not convert its assets into cash, whereas *credit risk* is the risk that it could fail to meet its contractual obligations. Some have claimed that this distinction is unclear and that, particularly in the case of financial institutions, "the definition of liquidity is elusive." See von Thadden, Ernst-Ludwig. "Liquidity Creation Through Banks and Markets: Multiple Insurance and Limited Market Access." *European Economic Review*, April 1999, 43(4-6), pp. 991-1006.



Views expressed do not necessarily reflect official positions of the Federal Reserve System.

Contents

Page

3	Monetary and Financial Indicators at a Glance
4	Monetary Aggregates and Their Components
6	Monetary Aggregates: Monthly Growth
7	Reserves Markets and Short-Term Credit Flows
8	Measures of Expected Inflation
9	Interest Rates
10	Policy-Based Inflation Indicators
11	Implied Forward Rates, Futures Contracts, and Inflation-Indexed Securities
12	Velocity, Gross Domestic Product, and M2
14	Bank Credit
15	Stock Market Index and Foreign Inflation and Interest Rates
16	Reference Tables
18	Definitions, Notes, and Sources

Conventions used in this publication:

1. Unless otherwise indicated, data are monthly.
2. Shaded areas indicate recessions, as determined by the National Bureau of Economic Research.
3. *Percent change at an annual rate* is the simple, not compounded, monthly percent change multiplied by 12. For example, using consecutive months, the percent change at an annual rate in x between month $t-1$ and the current month t is: $[(x_t/x_{t-1})-1] \times 1200$. Note that this differs from *National Economic Trends*. In that publication, monthly percent changes are compounded and expressed as annual growth rates.
4. The *percent change from year ago* refers to the percent change from the same period in the previous year. For example, the percent change from year ago in x between month $t-12$ and the current month t is: $[(x_t/x_{t-12})-1] \times 100$.

We welcome your comments addressed to:

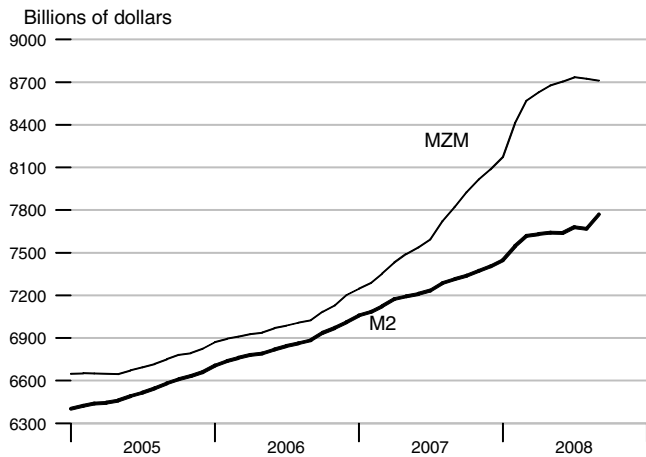
Editor, *Monetary Trends*
Research Division
Federal Reserve Bank of St. Louis
P.O. Box 442
St. Louis, MO 63166-0442

On March 23, 2006, the Board of Governors of the Federal Reserve System ceased the publication of the M3 monetary aggregate. It also ceased publishing the following components: large-denomination time deposits, RPs, and eurodollars.

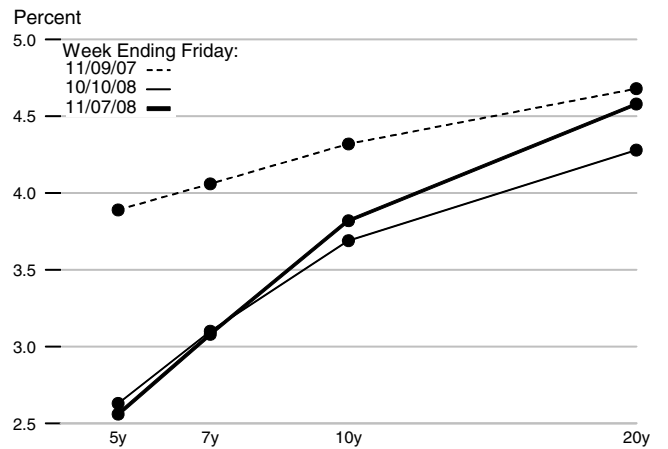
or to:

stlsFRED@stls.frb.org

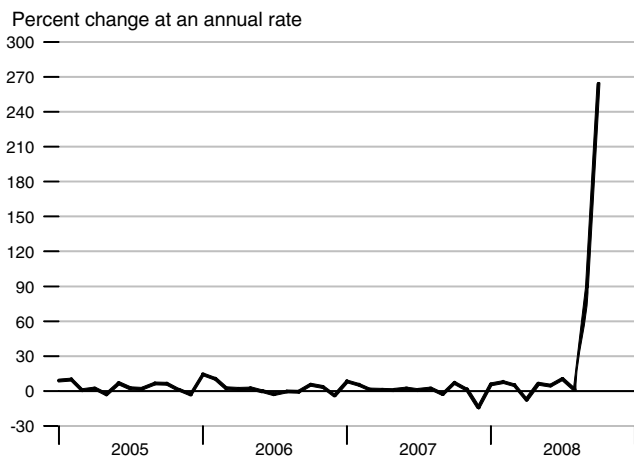
M2 and MZM



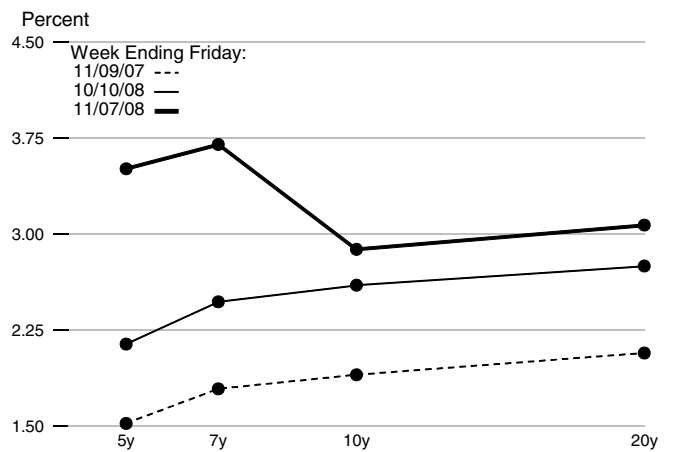
Treasury Yield Curve



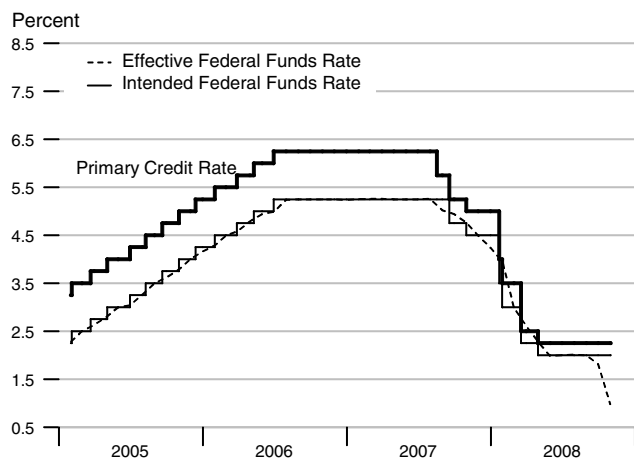
Adjusted Monetary Base



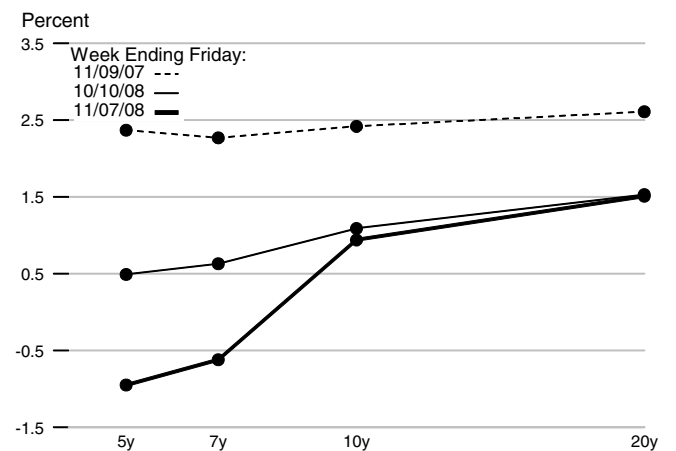
Real Treasury Yield Curve



Reserve Market Rates



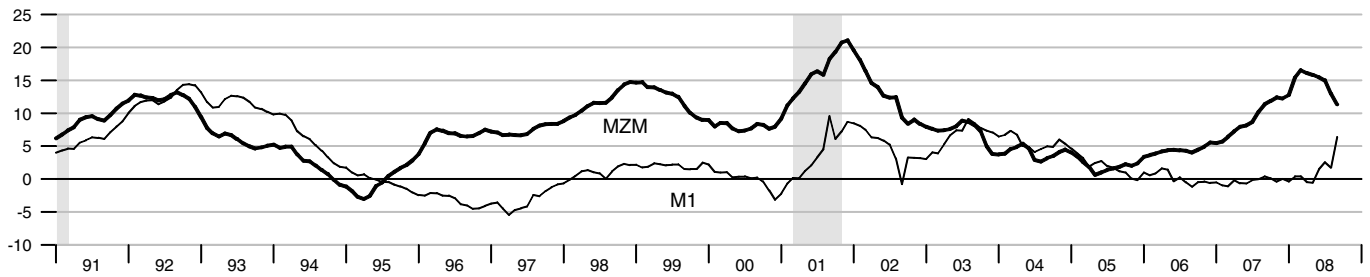
Inflation-Indexed Treasury Yield Spreads



Data available as of October 2008.

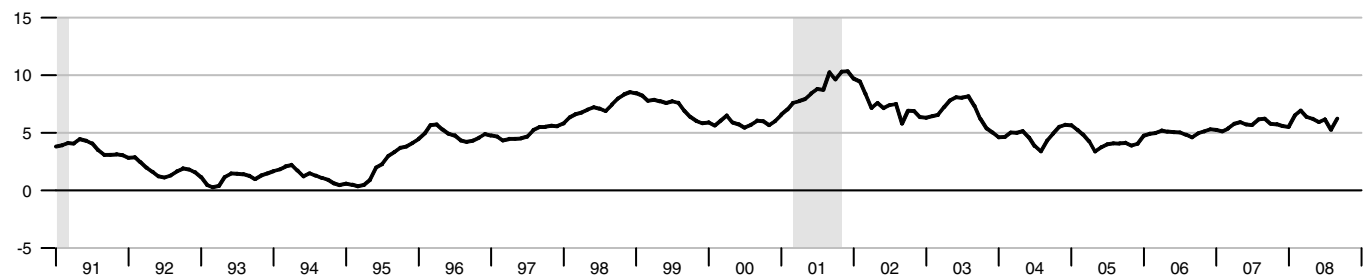
MZM and M1

Percent change from year ago



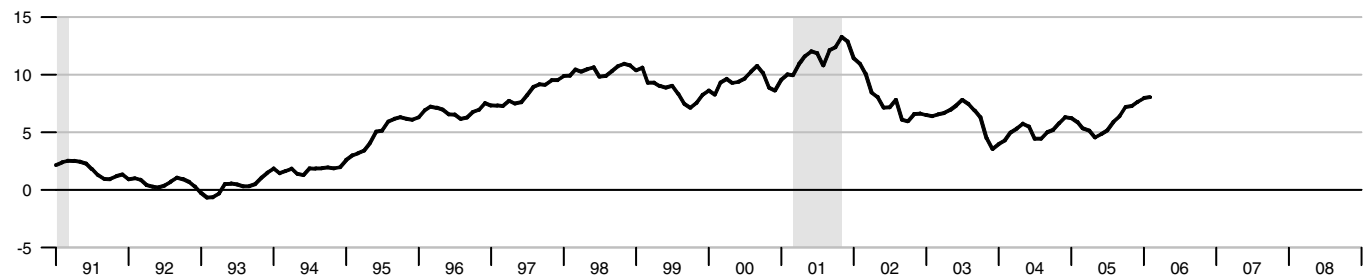
M2

Percent change from year ago



M3*

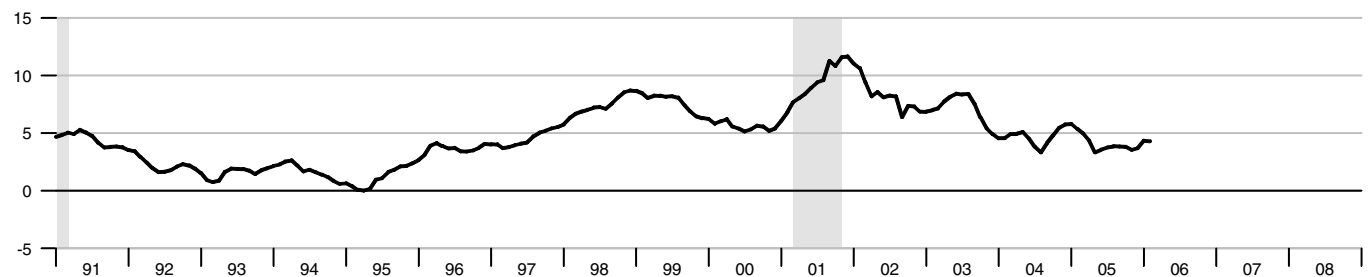
Percent change from year ago



*See table of contents for changes to the series.

Monetary Services Index - M2**

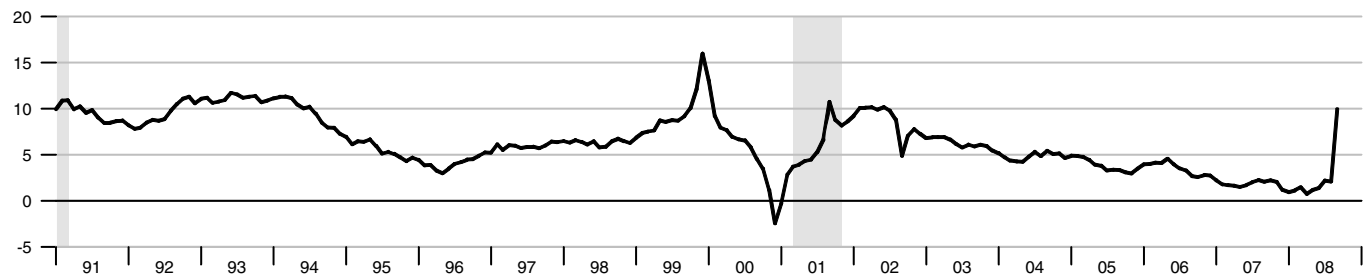
Percent change from year ago



**We will not update the MSI series until we revise the code to accommodate the discontinuation of M3.

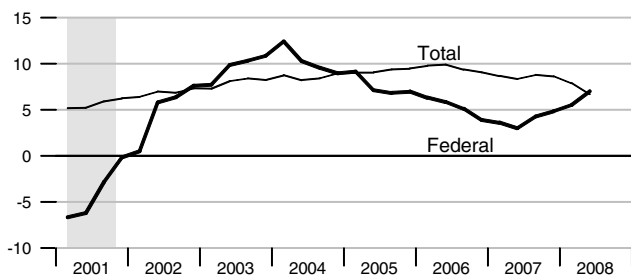
Adjusted Monetary Base

Percent change from year ago



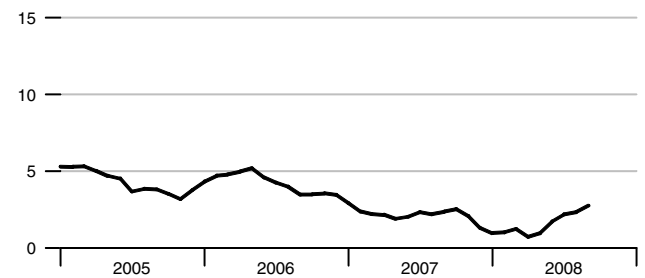
Domestic Nonfinancial Debt

Percent change from year ago



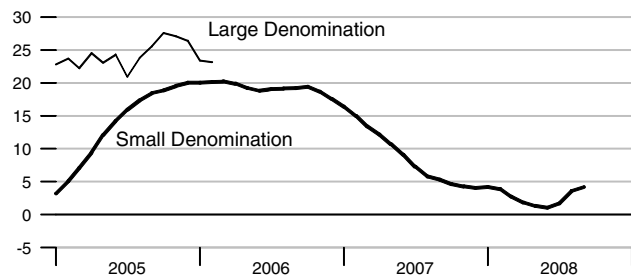
Currency Held by the Nonbank Public

Percent change from year ago



Time Deposits*

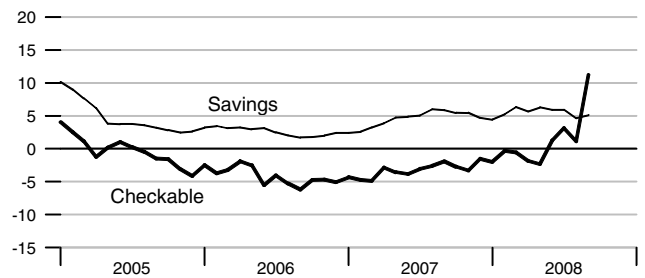
Percent change from year ago



*See table of contents for changes to the series.

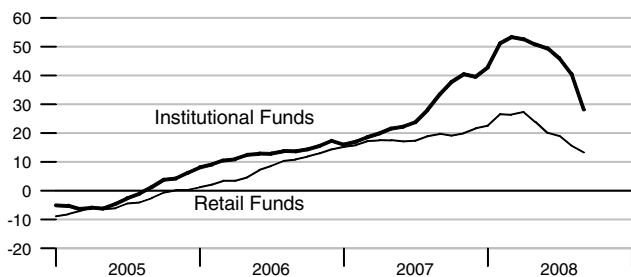
Checkable and Savings Deposits

Percent change from year ago



Money Market Mutual Fund Shares

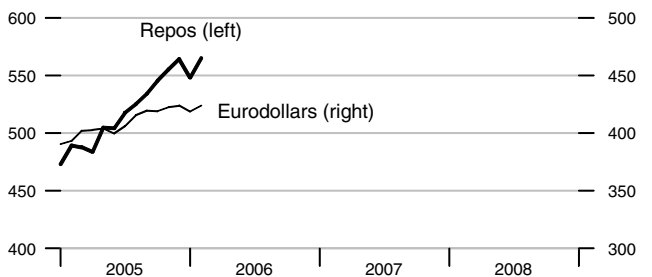
Percent change from year ago



Repurchase Agreements and Eurodollars*

Billions of dollars

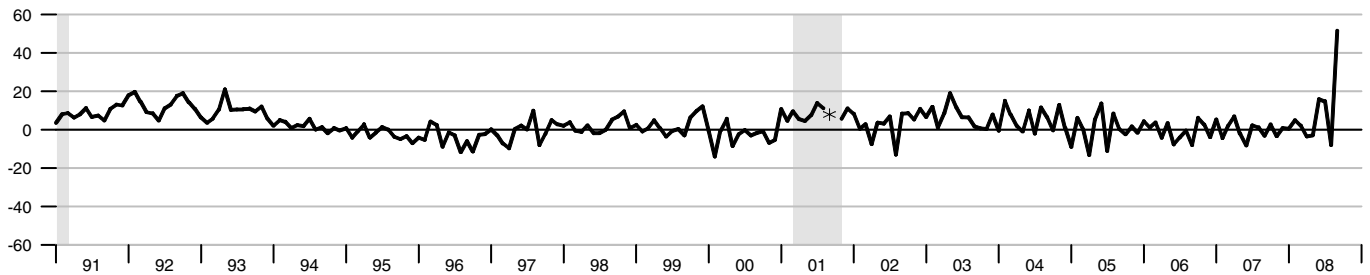
Billions of dollars



*See table of contents for changes to these series.

M1

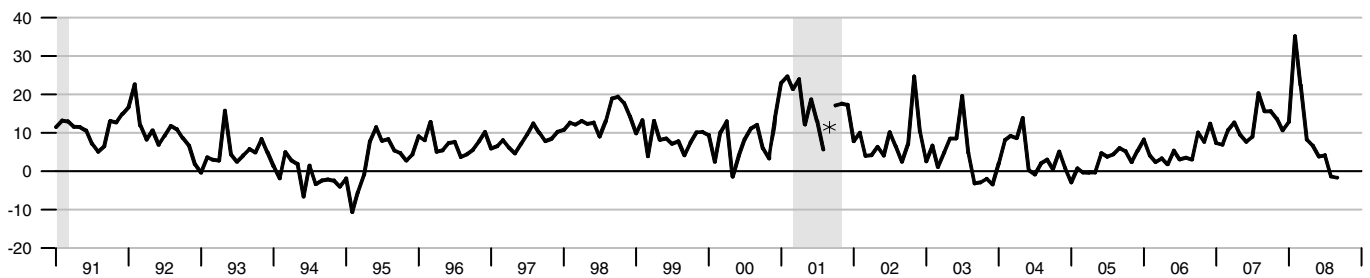
Percent change at an annual rate



*Actual values for September and October 2001 are 55.87 and -38.35 percent rate, respectively.

MZM

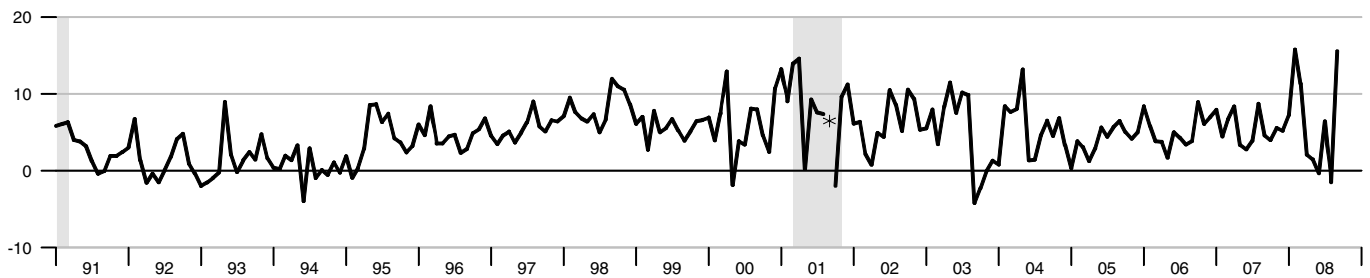
Percent change at an annual rate



*Actual value for September 2001 is 39.41 percent rate.

M2

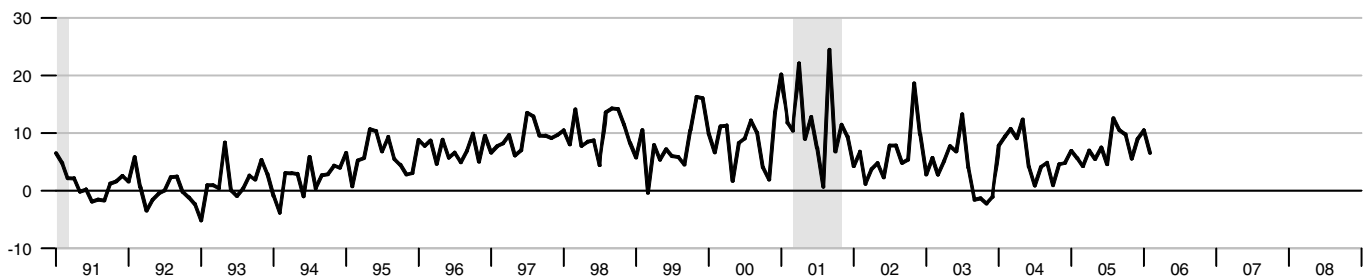
Percent change at an annual rate



*Actual value for September 2001 is 24.90 percent rate.

M3*

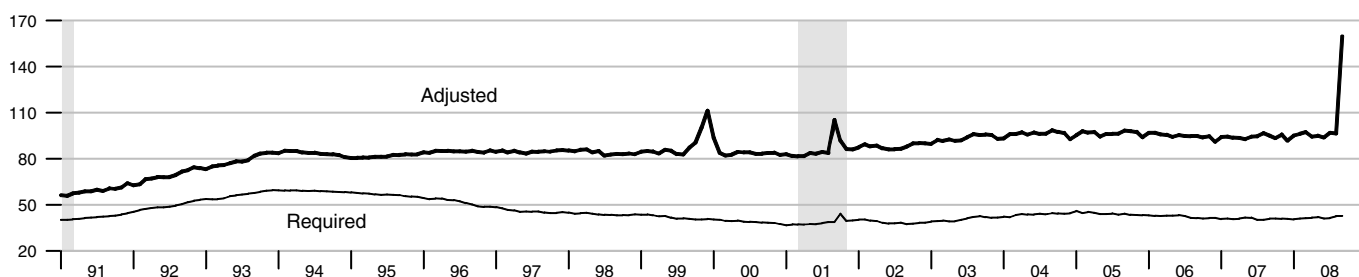
Percent change at an annual rate



*See table of contents for changes to the series.

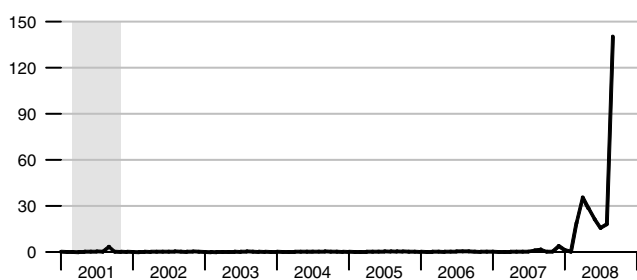
Adjusted and Required Reserves

Billions of dollars



Total Borrowings, nsa

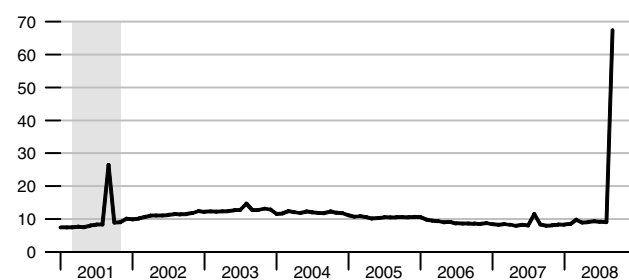
Billions of dollars



* Data exclude term auction credit

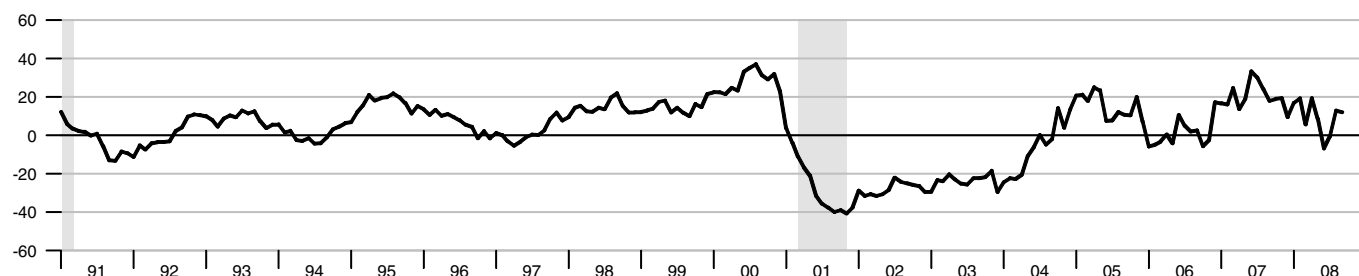
Excess Reserves plus RCB Contracts

Billions of dollars



Nonfinancial Commercial Paper

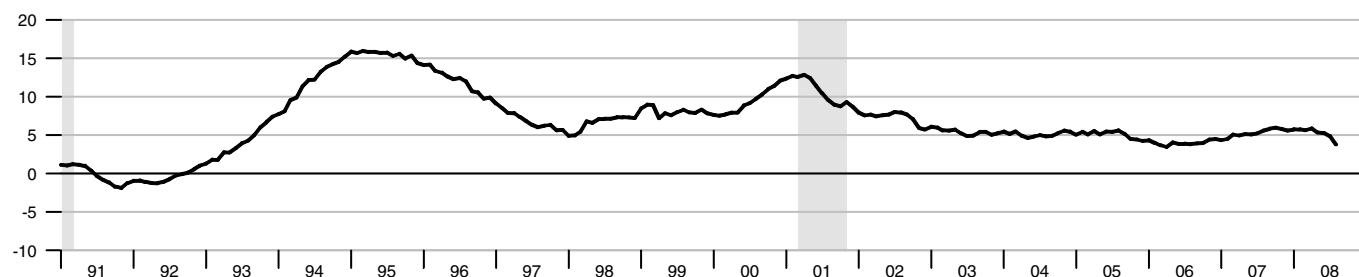
Percent change from year ago



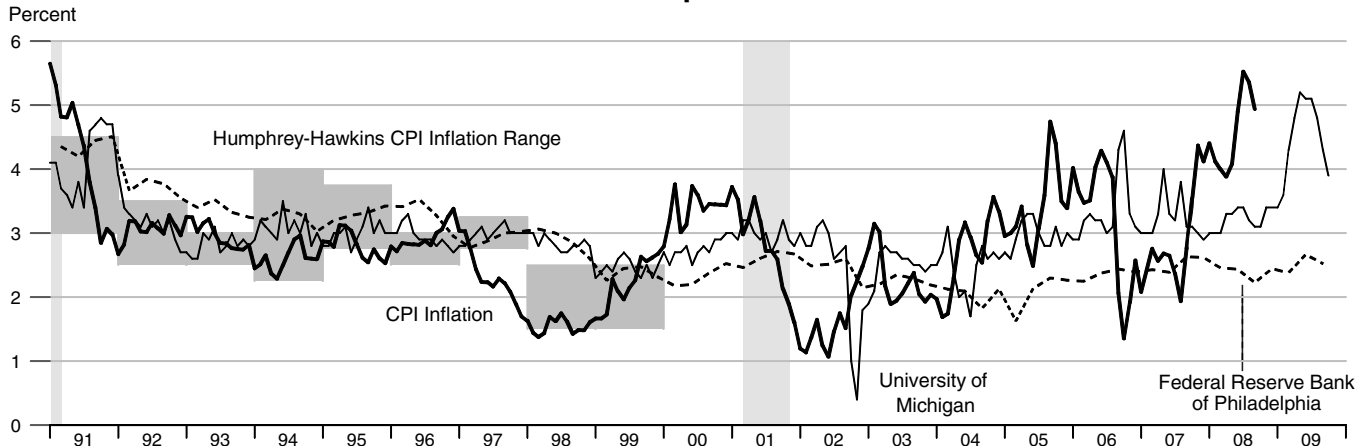
As of April 10, 2006, the Federal Reserve Board made major changes to its commercial paper calculations. For more information, please refer to <http://www.federalreserve.gov/releases/cp/about.htm>.

Consumer Credit

Percent change from year ago

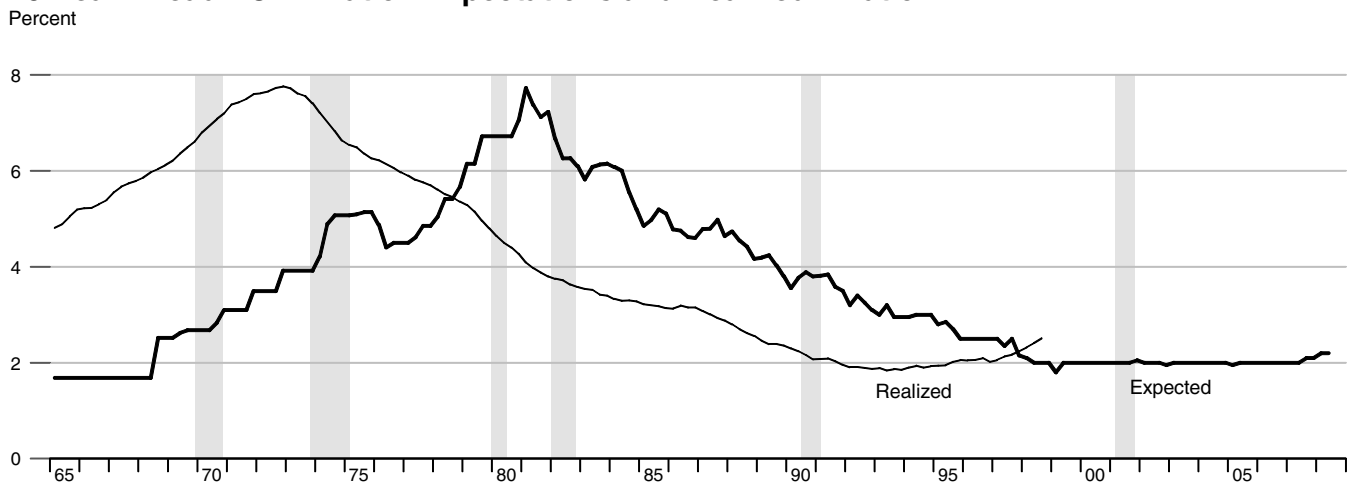


CPI Inflation and 1-Year-Ahead CPI Inflation Expectations

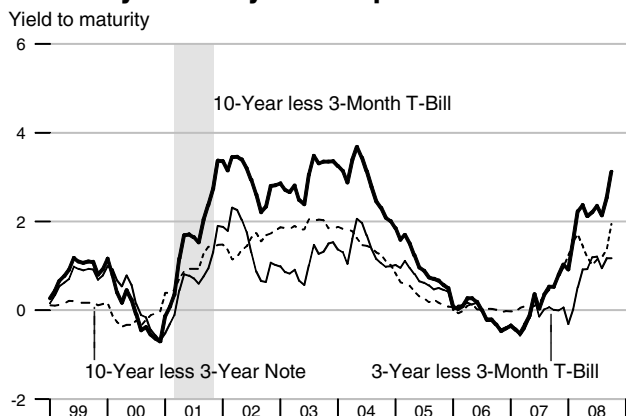


The shaded region shows the Humphrey-Hawkins CPI inflation range. Beginning in January 2000, the Humphrey-Hawkins inflation range was reported using the PCE price index and therefore is not shown on this graph.

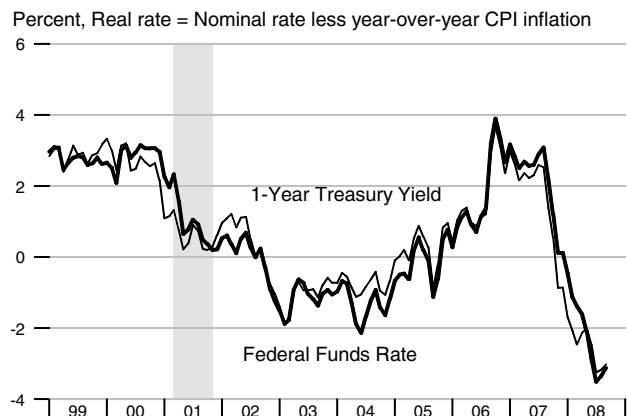
10-Year Ahead PCE Inflation Expectations and Realized Inflation



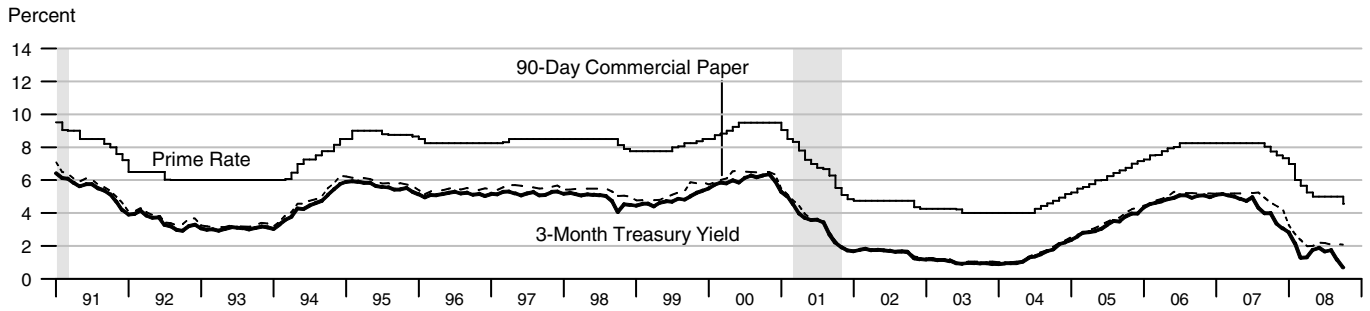
Treasury Security Yield Spreads



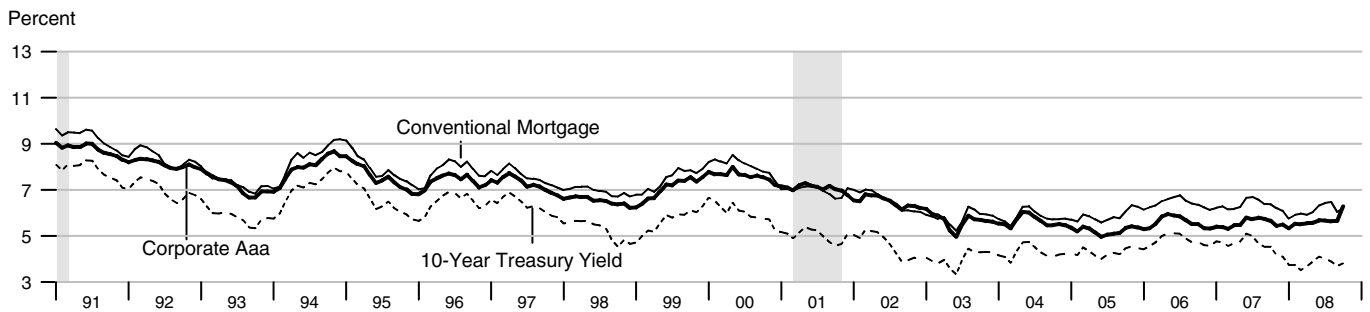
Real Interest Rates



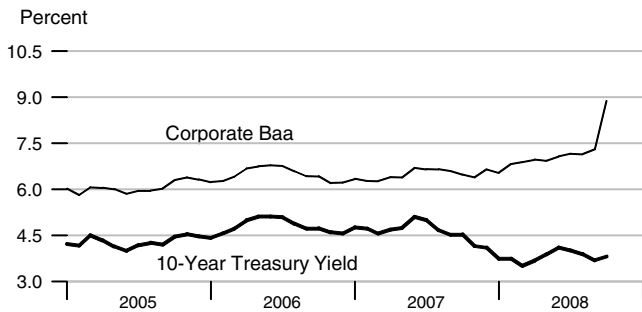
Short-Term Interest Rates



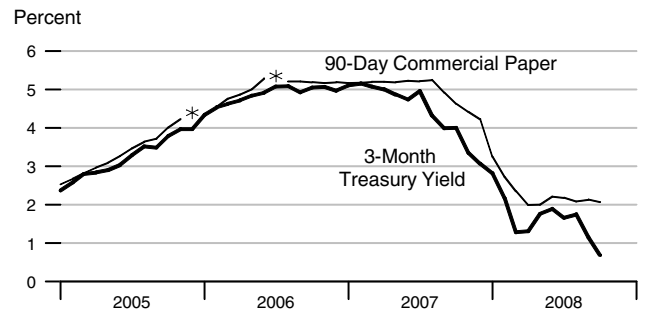
Long-Term Interest Rates



Long-Term Interest Rates

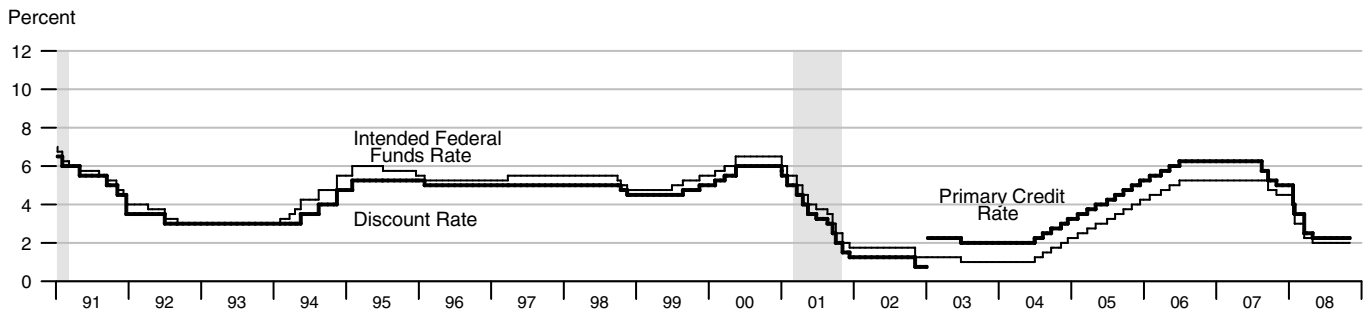


Short-Term Interest Rates



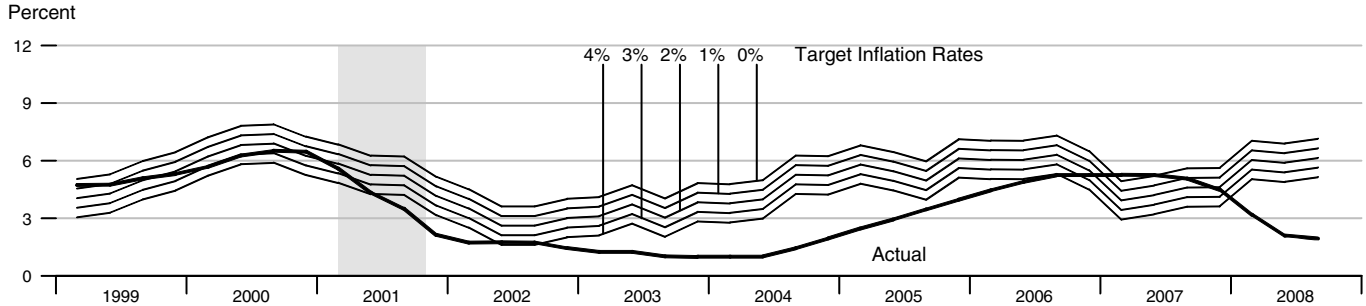
*90-Day Commercial Paper data are not available for December 2005, January 2006, and July 2006.

FOMC Intended Federal Funds Rate, Discount Rate, and Primary Credit Rate



Data available as of October 2008.

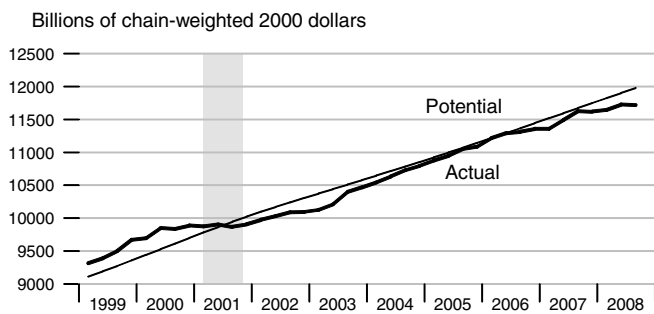
Federal Funds Rate and Inflation Targets



Calculated federal funds rate is based on Taylor's rule. See notes on page 19.

Components of Taylor's Rule

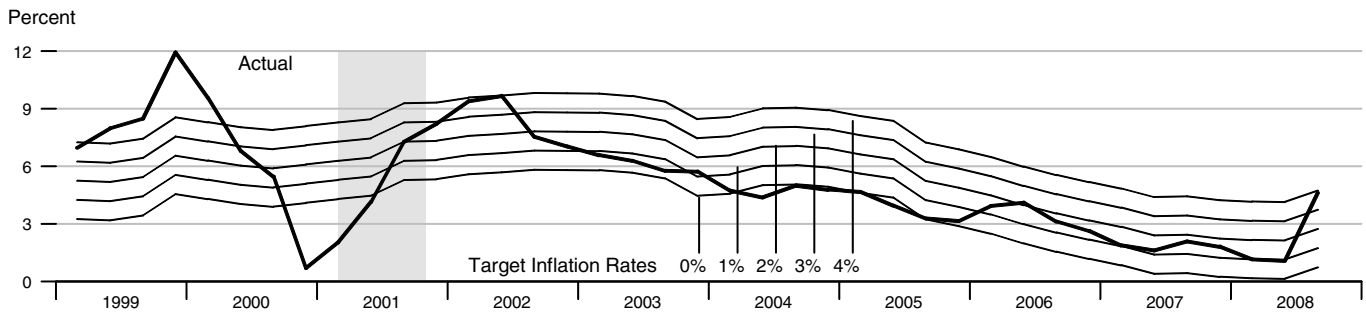
Actual and Potential Real GDP



PCE Inflation



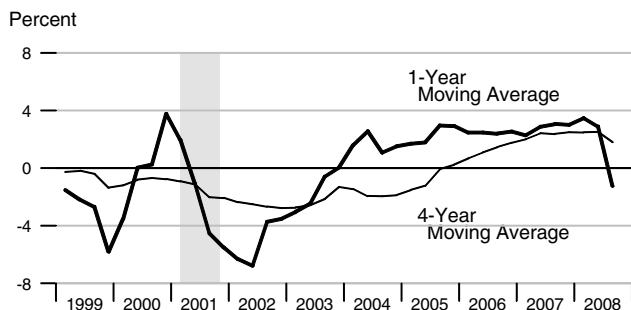
Monetary Base Growth* and Inflation Targets



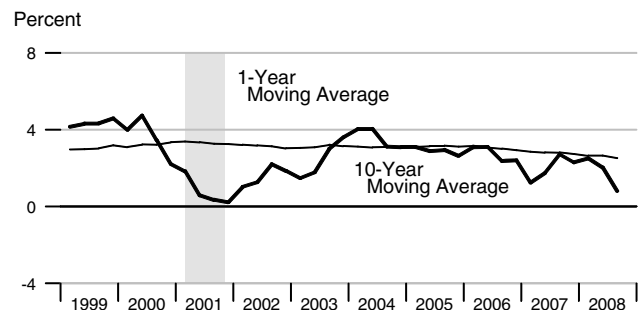
*Modified for the effects of sweeps programs on reserve demand. Calculated base growth is based on McCallum's rule. Actual base growth is percent change from year ago. See notes on page 19.

Components of McCallum's Rule

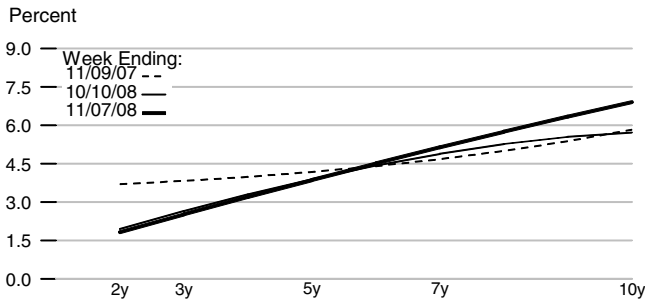
Monetary Base Velocity Growth



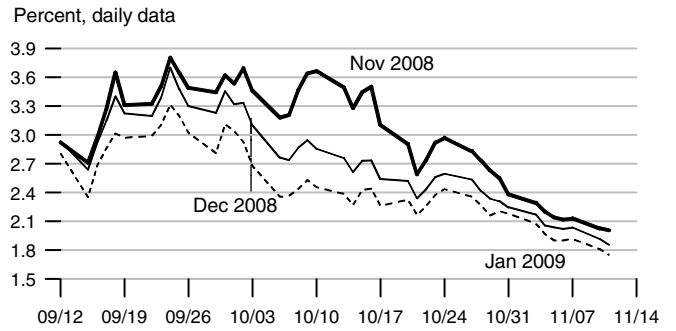
Real Output Growth



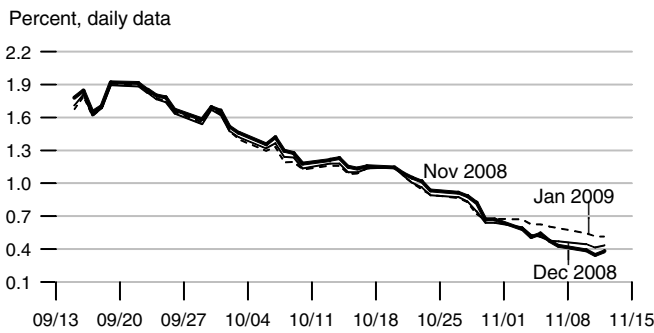
Implied One-Year Forward Rates



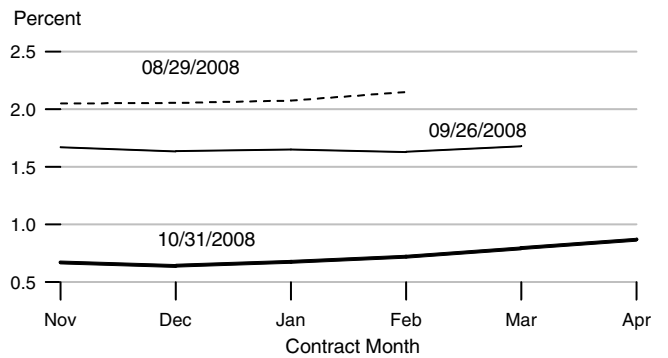
Rates on 3-Month Eurodollar Futures



Rates on Selected Federal Funds Futures Contracts

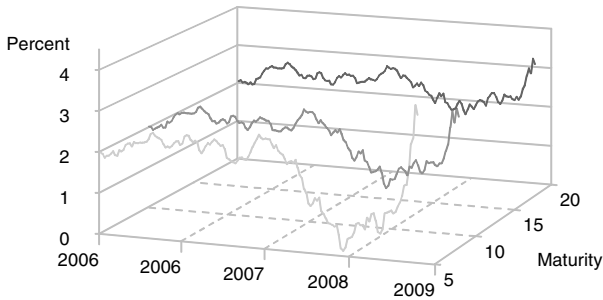


Rates on Federal Funds Futures on Selected Dates



Inflation-Indexed Treasury Securities

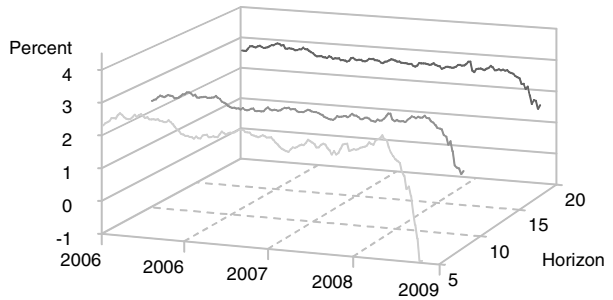
Weekly data



Note: Yields are inflation-indexed constant maturity U.S. Treasury securities

Inflation-Indexed Treasury Yield Spreads

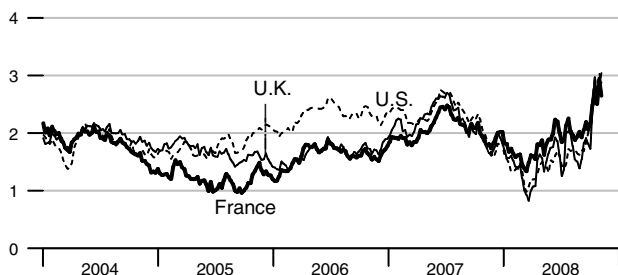
Weekly data



Note: Yield spread is between nominal and inflation-indexed constant maturity U.S. Treasury securities.

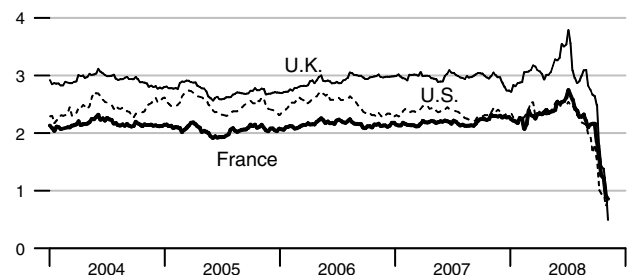
Inflation-Indexed 10-Year Government Notes

Percent, weekly data



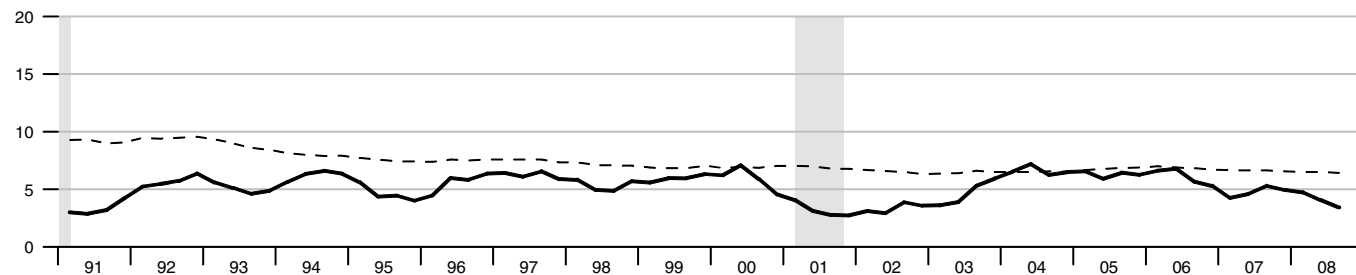
Inflation-Indexed 10-Year Government Yield Spreads

Percent, weekly data



Gross Domestic Product

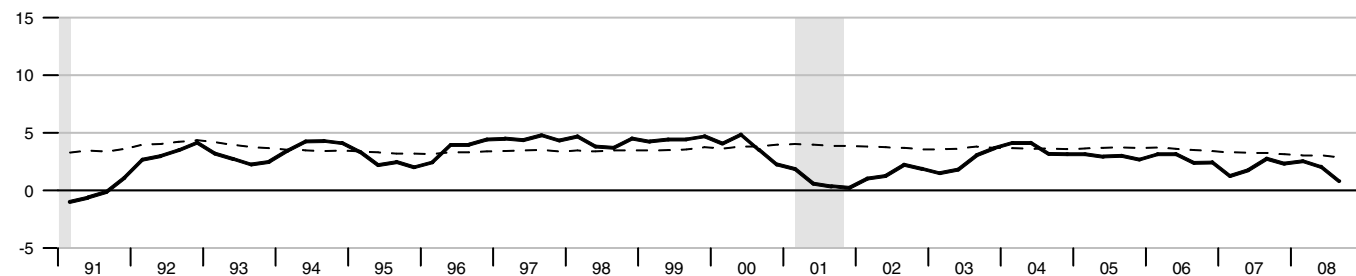
Percent change from year ago



Dashed lines indicate 10-year moving averages.

Real Gross Domestic Product

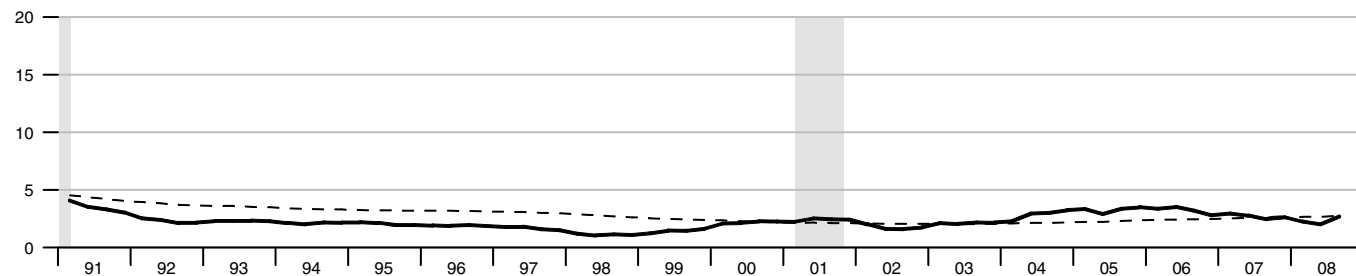
Percent change from year ago



Dashed lines indicate 10-year moving averages.

Gross Domestic Product Price Index

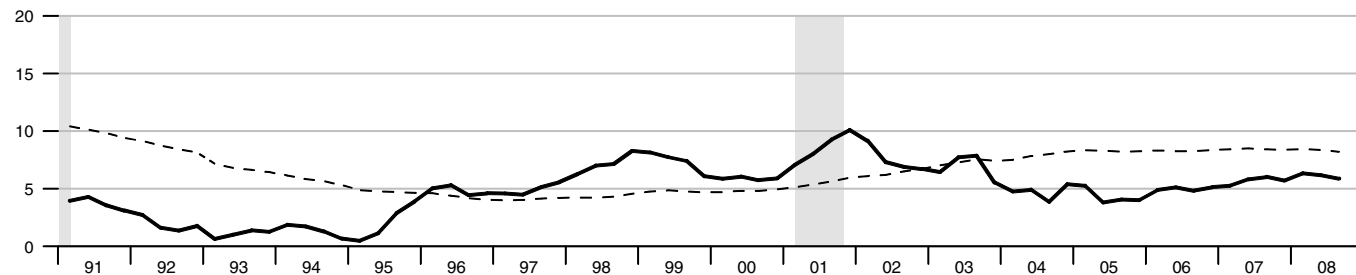
Percent change from year ago



Dashed lines indicate 10-year moving averages.

M2

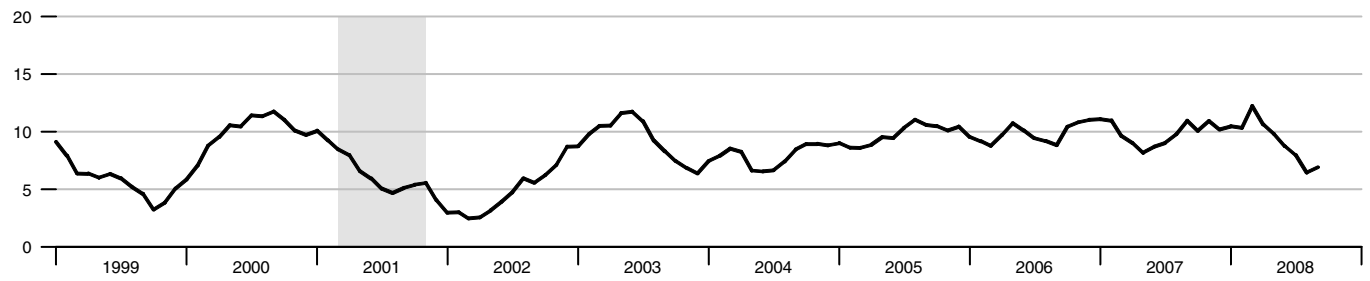
Percent change from year ago



Dashed lines indicate 10-year moving averages.

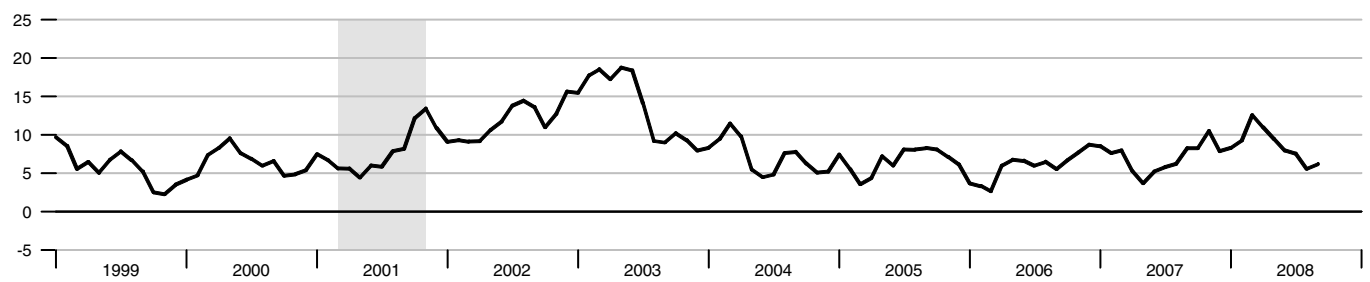
Bank Credit

Percent change from year ago



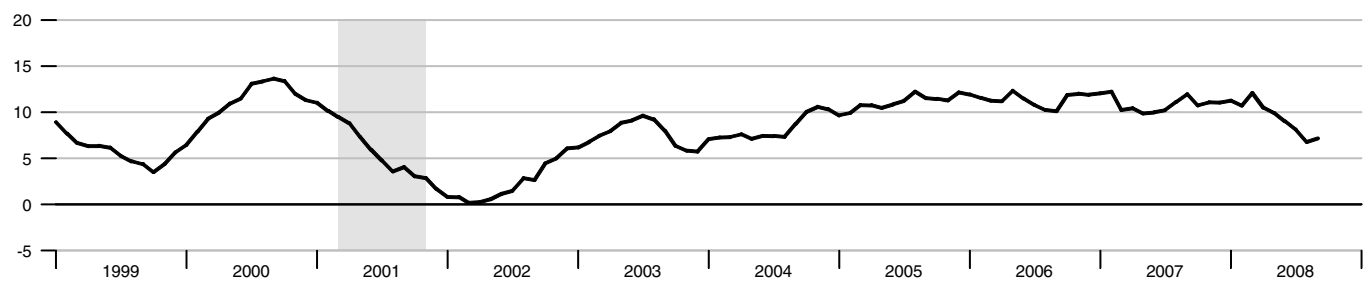
Investment Securities in Bank Credit at Commercial Banks

Percent change from year ago



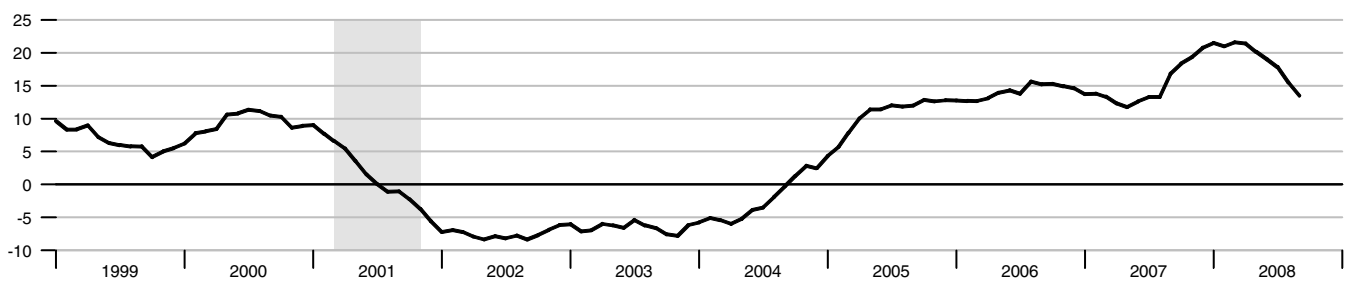
Total Loans and Leases in Bank Credit at Commercial Banks

Percent change from year ago

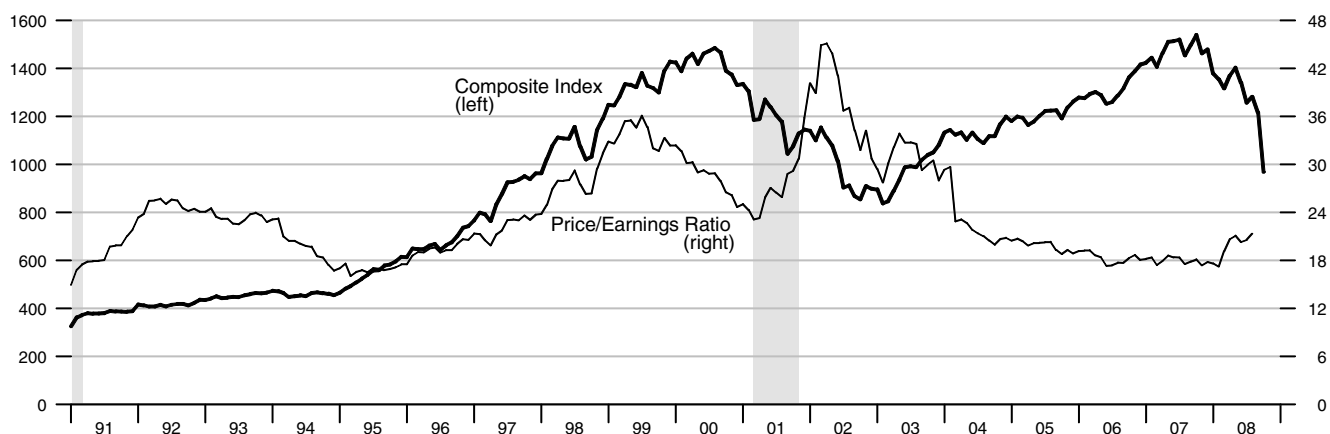


Commercial and Industrial Loans at Commercial Banks

Percent change from year ago



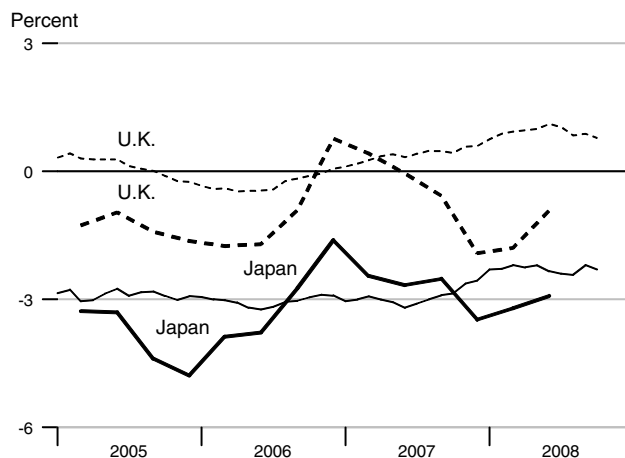
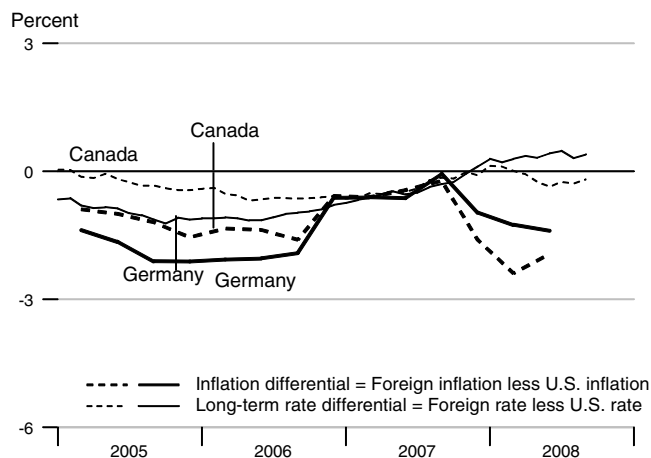
Standard & Poor's 500



Recent Inflation and Long-Term Interest Rates

	Consumer Price Inflation Rates				Long-Term Government Bond Rates			
	Percent change from year ago				Percent			
	2007Q4	2008Q1	2008Q2	2008Q3	Jul08	Aug08	Sep08	Oct08
United States	4.01	4.17	4.29	5.27	4.01	3.89	3.69	3.81
Canada	2.41	1.78	2.35	.	3.76	3.60	3.50	.
France	2.34	2.95	3.30	.	4.69	4.40	.	.
Germany	3.04	2.92	2.90	.	4.49	4.20	4.09	.
Italy	2.36	3.06	3.57	3.97	5.09	4.81	4.80	.
Japan	0.53	0.96	1.37	.	1.61	1.47	1.49	1.51
United Kingdom	2.09	2.38	3.37	.	5.05	4.73	4.57	4.59

Inflation and Long-Term Interest Rate Differentials



		Money Stock				Bank	Adjusted		MSI M2**
		M1	MZM	M2	M3*	Credit	Monetary Base	Reserves	
	2003	1273.484	6318.069	5967.902	8787.321	6118.279	740.938	93.325	315.192
	2004	1344.422	6569.804	6249.938	9234.718	6600.395	776.768	96.129	329.873
	2005	1371.780	6706.774	6517.356	9786.477	7245.165	806.628	96.560	343.539
	2006	1374.386	6995.516	6842.574	10270.74	7957.063	835.040	94.913	
	2007	1369.603	7626.162	7232.850		8743.027	850.578	94.200	
2006	1	1381.850	6891.629	6735.147		7621.954	830.534	96.495	
	2	1379.956	6945.088	6797.397		7883.600	836.387	95.082	
	3	1367.253	7006.517	6864.172		8037.414	834.610	94.829	
	4	1368.486	7138.831	6973.582		8285.286	838.627	93.247	
2007	1	1369.946	7296.282	7089.234		8426.751	846.309	94.122	
	2	1372.969	7486.247	7192.676		8563.658	849.918	93.557	
	3	1368.271	7713.138	7277.898		8834.552	852.266	95.428	
	4	1367.227	8008.981	7371.592		9147.148	853.821	93.692	
2008	1	1371.776	8385.200	7537.910		9354.633	856.319	96.177	
	2	1375.175	8669.467	7636.789		9395.796	859.325	94.395	
	3	1417.094	8723.418	7706.207		9460.568	892.689	117.643	
2006	Sep	1360.973	7025.234	6885.383		8072.137	834.211	94.877	
	Oct	1367.925	7084.115	6936.579		8227.053	837.884	93.955	
	Nov	1371.000	7129.412	6971.827		8275.334	840.308	94.689	
	Dec	1366.533	7202.966	7012.339		8353.471	837.690	91.097	
2007	Jan	1372.533	7246.756	7058.625		8393.922	843.494	94.186	
	Feb	1367.496	7288.538	7084.824		8460.113	847.258	94.424	
	Mar	1369.809	7353.552	7124.254		8426.219	848.174	93.757	
	Apr	1377.704	7431.242	7173.881		8505.945	848.961	93.602	
	May	1375.280	7489.817	7193.761		8563.754	849.615	92.772	
	Jun	1365.924	7537.682	7210.385		8621.276	851.179	94.298	
	Jul	1368.498	7593.947	7233.660		8705.234	851.857	94.604	
	Aug	1369.928	7722.440	7286.098		8842.134	853.437	96.647	
	Sep	1366.388	7823.027	7313.937		8956.287	851.505	95.032	
	Oct	1369.502	7925.050	7338.264		9056.457	856.460	93.525	
	Nov	1365.636	8015.346	7372.260		9179.590	857.515	95.757	
	Dec	1366.542	8086.547	7404.252		9205.396	847.487	91.793	
2008	Jan	1367.201	8173.321	7448.859		9272.855	851.441	95.083	
	Feb	1372.814	8412.758	7546.783		9334.826	856.944	96.197	
	Mar	1375.312	8569.522	7618.089		9456.218	860.571	97.251	
	Apr	1371.310	8628.195	7631.225		9409.705	855.241	94.382	
	May	1368.056	8676.194	7640.596		9403.180	859.685	94.941	
	Jun	1386.158	8704.011	7638.546		9374.503	863.050	93.863	
	Jul	1403.342	8734.137	7679.394		9398.112	870.540	96.804	
	Aug	1394.025	8724.134	7669.863		9412.880	871.333	96.426	
	Sep	1453.915	8711.982	7769.365		9570.713	936.195	159.700	

Note: All values are given in billions of dollars. *See table of contents for changes to the series.

**We will not update the MSI series until we revise the code to accommodate the discontinuation of M3.

		Federal Funds	Primary Credit Rate	Prime Rate	3-mo CDs	Treasury Yields			Corporate Aaa Bonds	Municipal Aaa Bonds	Conventional Mortgage
						3-mo	3-yr	10-yr			
2003		1.13	2.11	4.12	1.15	1.03	2.11	4.02	5.67	4.52	5.82
2004		1.35	2.34	4.34	1.56	1.40	2.78	4.27	5.63	4.50	5.84
2005		3.21	4.19	6.19	3.51	3.21	3.93	4.29	5.23	4.28	5.86
2006		4.96	5.96	7.96	5.15	4.85	4.77	4.79	5.59	4.15	6.41
2007		5.02	5.86	8.05	5.27	4.47	4.34	4.63	5.56	4.13	6.34
2006	1	4.46	5.43	7.43	4.72	4.50	4.58	4.57	5.39	4.29	6.24
	2	4.91	5.90	7.90	5.18	4.83	4.98	5.07	5.89	4.36	6.60
	3	5.25	6.25	8.25	5.39	5.03	4.87	4.90	5.68	4.13	6.56
	4	5.25	6.25	8.25	5.32	5.03	4.65	4.63	5.39	3.82	6.24
2007	1	5.26	6.25	8.25	5.31	5.12	4.68	4.68	5.36	3.91	6.22
	2	5.25	6.25	8.25	5.32	4.87	4.76	4.85	5.58	4.13	6.37
	3	5.07	5.93	8.18	5.42	4.42	4.41	4.73	5.75	4.27	6.55
	4	4.50	5.02	7.52	5.02	3.47	3.50	4.26	5.53	4.24	6.23
2008	1	3.18	3.67	6.21	3.23	2.09	2.17	3.66	5.46	4.39	5.88
	2	2.09	2.33	5.08	2.76	1.65	2.67	3.89	5.60	4.42	6.09
	3	1.94	2.25	5.00	3.06	1.52	2.63	3.86	5.65	4.46	6.31
2006	Oct	5.25	6.25	8.25	5.33	5.05	4.72	4.73	5.51	3.91	6.36
	Nov	5.25	6.25	8.25	5.32	5.07	4.64	4.60	5.33	3.81	6.24
	Dec	5.24	6.25	8.25	5.32	4.97	4.58	4.56	5.32	3.76	6.14
2007	Jan	5.25	6.25	8.25	5.32	5.11	4.79	4.76	5.40	3.89	6.22
	Feb	5.26	6.25	8.25	5.31	5.16	4.75	4.72	5.39	3.95	6.29
	Mar	5.26	6.25	8.25	5.30	5.08	4.51	4.56	5.30	3.88	6.16
	Apr	5.25	6.25	8.25	5.31	5.01	4.60	4.69	5.47	3.99	6.18
	May	5.25	6.25	8.25	5.31	4.87	4.69	4.75	5.47	4.04	6.26
	Jun	5.25	6.25	8.25	5.33	4.74	5.00	5.10	5.79	4.36	6.66
	Jul	5.26	6.25	8.25	5.32	4.96	4.82	5.00	5.73	4.24	6.70
	Aug	5.02	6.01	8.25	5.49	4.32	4.34	4.67	5.79	4.30	6.57
	Sep	4.94	5.53	8.03	5.46	3.99	4.06	4.52	5.74	4.26	6.38
	Oct	4.76	5.24	7.74	5.08	4.00	4.01	4.53	5.66	4.20	6.38
	Nov	4.49	5.00	7.50	4.97	3.35	3.35	4.15	5.44	4.26	6.21
	Dec	4.24	4.83	7.33	5.02	3.07	3.13	4.10	5.49	4.25	6.10
2008	Jan	3.94	4.48	6.98	3.84	2.82	2.51	3.74	5.33	4.13	5.76
	Feb	2.98	3.50	6.00	3.06	2.17	2.19	3.74	5.53	4.42	5.92
	Mar	2.61	3.04	5.66	2.79	1.28	1.80	3.51	5.51	4.63	5.97
	Apr	2.28	2.49	5.24	2.85	1.31	2.23	3.68	5.55	4.45	5.92
	May	1.98	2.25	5.00	2.66	1.76	2.69	3.88	5.57	4.34	6.04
	Jun	2.00	2.25	5.00	2.76	1.89	3.08	4.10	5.68	4.47	6.32
	Jul	2.01	2.25	5.00	2.79	1.66	2.87	4.01	5.67	4.44	6.43
	Aug	2.00	2.25	5.00	2.79	1.75	2.70	3.89	5.64	4.44	6.48
	Sep	1.81	2.25	5.00	3.59	1.15	2.32	3.69	5.65	4.49	6.04
	Oct	0.97	1.81	4.56	4.32	0.69	1.86	3.81	6.28	5.23	6.20

Note: All values are given as a percent at an annual rate.

		M1	MZM	M2	M3*
Percent change at an annual rate					
2003		6.46	7.30	6.88	6.40
2004		5.57	3.98	4.73	5.09
2005		2.03	2.08	4.28	5.97
2006		0.19	4.31	4.99	4.95
2007		-0.35	9.01	5.70	
<hr/>					
2006	1	1.98	5.38	6.12	
	2	-0.55	3.10	3.70	
	3	-3.68	3.54	3.93	
	4	0.36	7.55	6.38	
2007	1	0.43	8.82	6.63	
	2	0.88	10.41	5.84	
	3	-1.37	12.12	4.74	
	4	-0.31	15.34	5.15	
2008	1	1.33	18.79	9.02	
	2	0.99	13.56	5.25	
	3	12.19	2.49	3.64	
<hr/>					
2006	Sep	-8.01	3.07	3.87	
	Oct	6.13	10.06	8.92	
	Nov	2.70	7.67	6.10	
	Dec	-3.91	12.38	6.97	
<hr/>					
2007	Jan	5.27	7.30	7.92	
	Feb	-4.40	6.92	4.45	
	Mar	2.03	10.70	6.68	
	Apr	6.92	12.68	8.36	
	May	-2.11	9.46	3.33	
	Jun	-8.16	7.67	2.77	
	Jul	2.26	8.96	3.87	
	Aug	1.25	20.30	8.70	
	Sep	-3.10	15.63	4.59	
	Oct	2.73	15.65	3.99	
	Nov	-3.39	13.67	5.56	
	Dec	0.80	10.66	5.21	
<hr/>					
2008	Jan	0.58	12.88	7.23	
	Feb	4.93	35.15	15.78	
	Mar	2.18	22.36	11.34	
	Apr	-3.49	8.22	2.07	
	May	-2.85	6.68	1.47	
	Jun	15.88	3.85	-0.32	
	Jul	14.88	4.15	6.42	
	Aug	-7.97	-1.37	-1.49	
	Sep	51.55	-1.67	15.57	

*See table of contents for changes to the series.

Definitions

M1: The sum of currency held outside the vaults of depository institutions, Federal Reserve Banks, and the U.S. Treasury; travelers checks; and demand and other checkable deposits issued by financial institutions (except demand deposits due to the Treasury and depository institutions), minus cash items in process of collection and Federal Reserve float.

MZM (money, zero maturity): M2 minus small-denomination time deposits, plus institutional money market mutual funds (that is, those included in M3 but excluded from M2). The label MZM was coined by William Poole (1991); the aggregate itself was proposed earlier by Motley (1988).

M2: M1 plus savings deposits (including money market deposit accounts) and small-denomination (under \$100,000) time deposits issued by financial institutions; and shares in retail money market mutual funds (funds with initial investments under \$50,000), net of retirement accounts.

M3: M2 plus large-denomination (\$100,000 or more) time deposits; repurchase agreements issued by depository institutions; Eurodollar deposits, specifically, dollar-denominated deposits due to nonbank U.S. addresses held at foreign offices of U.S. banks worldwide and all banking offices in Canada and the United Kingdom; and institutional money market mutual funds (funds with initial investments of \$50,000 or more).

Bank Credit: All loans, leases, and securities held by commercial banks.

Domestic Nonfinancial Debt: Total credit market liabilities of the U.S. Treasury, federally sponsored agencies, state and local governments, households, and nonfinancial firms. End-of-period basis.

Adjusted Monetary Base: The sum of currency in circulation outside Federal Reserve Banks and the U.S. Treasury, deposits of depository financial institutions at Federal Reserve Banks, and an adjustment for the effects of changes in statutory reserve requirements on the quantity of base money held by depositories. This series is a spliced chain index; see Anderson and Rasche (1996a,b, 2001, 2003).

Adjusted Reserves: The sum of vault cash and Federal Reserve Bank deposits held by depository institutions and an adjustment for the effects of changes in statutory reserve requirements on the quantity of base money held by depositories. This spliced chain index is numerically larger than the Board of Governors' measure, which excludes vault cash not used to satisfy statutory reserve requirements and Federal Reserve Bank deposits used to satisfy required clearing balance contracts; see Anderson and Rasche (1996a, 2001, 2003).

Monetary Services Index: An index that measures the flow of monetary services received by households and firms from their holdings of liquid assets; see Anderson, Jones, and Nesmith (1997). Indexes are shown for the assets included in M2, with additional data at research.stlouisfed.org/msi/index.html.

Note: M1, M2, M3, Bank Credit, and Domestic Nonfinancial Debt are constructed and published by the Board of Governors of the Federal Reserve System. For details, see *Statistical Supplement to the Federal Reserve Bulletin*, tables 1.21 and 1.26. MZM, Adjusted Monetary Base, Adjusted Reserves, and Monetary Services Index are constructed and published by the Research Division of the Federal Reserve Bank of St. Louis.

Notes

Page 3: Readers are cautioned that, since early 1994, the level and growth of M1 have been depressed by retail sweep programs that reclassify transactions deposits (demand deposits and other checkable deposits) as savings deposits overnight, thereby reducing banks' required reserves; see Anderson and Rasche (2001) and research.stlouisfed.org/aggreg/swdata.html. **Primary Credit Rate**, **Discount Rate**, and **Intended Federal Funds Rate** shown in the chart **Reserve Market Rates** are plotted as of the date of the change, while the **Effective Federal Funds Rate** is plotted as of the end of the month. Interest rates in the table are monthly averages from the Board of Governors H.15 Statistical Release. The **Treasury Yield Curve** and **Real Treasury Yield Curve** show constant maturity yields calculated by the U.S. Treasury for securities 5, 7, 10, and 20 years to maturity. **Inflation-Indexed Treasury Yield Spreads** are a measure of inflation compensation at those horizons, and it is simply the nomi-

nal constant maturity yield less the real constant maturity yield. Daily data and descriptions are available at research.stlouisfed.org/fred2/. See also *Statistical Supplement to the Federal Reserve Bulletin*, table 1.35. The 30-year constant maturity series was discontinued by the Treasury as of February 18, 2002.

Page 5: **Checkable Deposits** is the sum of demand and other checkable deposits. **Savings Deposits** is the sum of money market deposit accounts and passbook and statement savings. **Time Deposits** have a minimum initial maturity of 7 days. **Large Time Deposits** are deposits of \$100,000 or more. **Retail** and **Institutional Money Market Mutual Funds** are as included in M2 and the non-M2 component of M3, respectively.

Page 7: **Excess Reserves plus RCB (Required Clearing Balance) Contracts** equals the amount of deposits at Federal Reserve Banks held by depository institutions but not applied to satisfy statutory reserve requirements. (This measure excludes the vault cash held by depository institutions that is not applied to satisfy statutory reserve requirements.) **Consumer Credit** includes most short- and intermediate-term credit extended to individuals. See *Statistical Supplement to the Federal Reserve Bulletin*, table 1.55.

Page 8: **Inflation Expectations** measures include the quarterly Federal Reserve Bank of Philadelphia *Survey of Professional Forecasters*, the monthly University of Michigan Survey Research Center's *Surveys of Consumers*, and the annual Federal Open Market Committee (FOMC) range as reported to the Congress in the February testimony that accompanies the Monetary Policy Report to the Congress. Beginning February 2000, the FOMC began using the personal consumption expenditures (PCE) price index to report its inflation range; the FOMC then switched to the PCE chain-type price index excluding food and energy prices ("core") beginning July 2004. Accordingly, neither are shown on this graph. **CPI Inflation** is the percentage change from a year ago in the consumer price index for all urban consumers. **Real Interest Rates** are ex post measures, equal to nominal rates minus year-over-year CPI inflation.

From 1991 to the present the source of the long-term PCE inflation expectations data is the Federal Reserve Bank of Philadelphia's *Survey of Professional Forecasters*. Prior to 1991, the data were obtained from the Board of Governors of the Federal Reserve System. Realized (actual) inflation is the annualized rate of change for the 40-quarter period that corresponds to the forecast horizon (the expectations measure). For example, in 1965:Q1, annualized PCE inflation over the next 40 quarters was expected to average 1.7 percent. In actuality, the average annualized rate of change measured 4.8 percent from 1965:Q1 to 1975:Q1. Thus, the vertical distance between the two lines in the chart at any point is the forecast error.

Page 9: **FOMC Intended Federal Funds Rate** is the level (or midpoint of the range, if applicable) of the federal funds rate that the staff of the FOMC expected to be consistent with the desired degree of pressure on bank reserve positions. In recent years, the FOMC has set an explicit target for the federal funds rate.

Page 10: **Federal Funds Rate and Inflation Targets** shows the observed federal funds rate, quarterly, and the level of the funds rate implied by applying Taylor's (1993) equation

$$f_t^* = 2.5 + \pi_{t-1} + (\pi_{t-1} - \pi^*)/2 + 100 \cdot (y_{t-1} - y_{t-1}^P)/2$$

to five alternative target inflation rates, $\pi^* = 0, 1, 2, 3, 4$ percent, where f_t^* is the implied federal funds rate, π_{t-1} is the previous period's inflation rate (PCE) measured on a year-over-year basis, y_{t-1} is the log of the previous period's level of real gross domestic product (GDP), and y_{t-1}^P is the log of an estimate of the previous period's level of potential output. **Potential Real GDP** is as estimated by the Congressional Budget Office.

Monetary Base Growth and Inflation Targets shows the quarterly growth of the adjusted monetary base (modified to include an estimate of the effect of sweep programs) implied by applying McCallum's (1988, 1993) equation

$$\begin{aligned} \Delta MB_t^* &= \pi^* + (10\text{-year moving average growth of real GDP}) \\ &\quad - (4\text{-year moving average of base velocity growth}) \end{aligned}$$

to five alternative target inflation rates, $\pi^* = 0, 1, 2, 3, 4$ percent, where ΔMB_t^* is the implied growth rate of the adjusted monetary base. The 10-year moving average growth of real GDP for a quarter t is calculated as the average quarterly growth during the previous 40 quarters, at an annual rate, by the formula

$(y_t - y_{t-40})/40) \times 400$, where y_t is the log of real GDP. The 4-year moving average of base velocity growth is calculated similarly. To adjust the monetary base for the effect of retail-deposit sweep programs, we add to the monetary base an amount equal to 10 percent of the total amount swept, as estimated by the Federal Reserve Board staff. These estimates are imprecise, at best. Sweep program data are found at research.stlouisfed.org/aggreg/swdata.html.

Page 11: Implied One-Year Forward Rates are calculated by this Bank from Treasury constant maturity yields. Yields to maturity, $R(m)$, for securities with $m = 1, \dots, 10$ years to maturity are obtained by linear interpolation between reported yields. These yields are smoothed by fitting the regression suggested by Nelson and Siegel (1987),

$$R(m) = a_0 + (a_1 + a_2)(1 - e^{-m/50})/(m/50) - a_2 \times e^{-m/50},$$

and forward rates are calculated from these smoothed yields using equation (a) in table 13.1 of Shiller (1990),

$$f(m) = [D(m)R(m) - D(m-1)] / [D(m) - D(m-1)],$$

where duration is approximated as $D(m) = (1 - e^{-R(m) \times m})/R(m)$. These rates are linear approximations to the true instantaneous forward rates; see Shiller (1990). For a discussion of the use of forward rates as indicators of inflation expectations, see Sharpe (1997). **Rates on 3-Month Eurodollar Futures** and **Rates on Selected Federal Funds Futures Contracts** trace through time the yield on three specific contracts. **Rates on Federal Funds Futures on Selected Dates** displays a single day's snapshot of yields for contracts expiring in the months shown on the horizontal axis. **Inflation-Indexed Treasury Securities and Yield Spreads** are those plotted on page 3. **Inflation-Indexed 10-Year Government Notes** shows the yield of an inflation-indexed note that is scheduled to mature in approximately (but not greater than) 10 years. The current French note has a maturity date of 7/25/2015, the current U.K. note has a maturity date of 8/16/2013, and the current U.S. note has a maturity date of 1/15/2018. **Inflation-Indexed Treasury Yield Spreads** and **Inflation-Indexed 10-Year Government Yield Spreads** equal the difference between the yields on the most recently issued inflation-indexed securities and the unadjusted security yields of similar maturity.

Page 12: Velocity (for MZM and M2) equals the ratio of GDP, measured in current dollars, to the level of the monetary aggregate. **MZM and M2 Own Rates** are weighted averages of the rates received by households and firms on the assets included in the aggregates. Prior to 1982, the 3-month T-bill rates are secondary market yields. From 1982 forward, rates are 3-month constant maturity yields.

Page 13: Real Gross Domestic Product is GDP as measured in chained 2000 dollars. The **Gross Domestic Product Price Index** is the implicit price deflator for GDP, which is defined by the Bureau of Economic Analysis, U.S. Department of Commerce, as the ratio of GDP measured in current dollars to GDP measured in chained 2000 dollars.

Page 14: Investment Securities are all securities held by commercial banks in both investment and trading accounts.

Page 15: Inflation Rate Differentials are the differences between the foreign consumer price inflation rates and year-over-year changes in the U.S. all-items Consumer Price Index.

Page 17: Treasury Yields are Treasury constant maturities as reported in the Board of Governors of the Federal Reserve System's H.15 release.

Sources

Agence France Trésor: French note yields.

Bank of Canada: Canadian note yields.

Bank of England: U.K. note yields.

Board of Governors of the Federal Reserve System:

Monetary aggregates and components: H.6 release. Bank credit and components: H.8 release. Consumer credit: G.19 release. Required reserves, excess reserves, clearing balance contracts, and discount window borrowing: H.4.1 and H.3 releases. Interest rates: H.15 release. Nonfinancial commercial paper: Board of Governors website. Nonfinancial debt: Z.1 release. M2 own rate.

Bureau of Economic Analysis: GDP.

Bureau of Labor Statistics: CPI.

Chicago Board of Trade: Federal funds futures contract.

Chicago Mercantile Exchange: Eurodollar futures.

Congressional Budget Office: Potential real GDP.

Federal Reserve Bank of Philadelphia: Survey of Professional Forecasters inflation expectations.

Federal Reserve Bank of St. Louis: Adjusted monetary base and adjusted reserves, monetary services index, MZM own rate, one-year forward rates.

Organization for Economic Cooperation and Development: International interest and inflation rates.

Standard & Poor's: Stock price-earnings ratio, stock price composite index.

University of Michigan Survey Research Center: Median expected price change.

U.S. Department of the Treasury: U.S. security yields.

References

Anderson, Richard G. and Robert H. Rasche (1996a). "A Revised Measure of the St. Louis Adjusted Monetary Base," *Federal Reserve Bank of St. Louis Review*, March/April, 78(2), pp. 3-13.*

____ and ____ (1996b). "Measuring the Adjusted Monetary Base in an Era of Financial Change," *Federal Reserve Bank of St. Louis Review*, November/December, 78(6), pp. 3-37.*

____ and ____ (2001). "Retail Sweep Programs and Bank Reserves, 1994-1999," *Federal Reserve Bank of St. Louis Review*, January/February, 83(1), pp. 51-72.*

____ and ____ , with Jeffrey Loesel (2003). "A Reconstruction of the Federal Reserve Bank of St. Louis Adjusted Monetary Base and Reserves," *Federal Reserve Bank of St. Louis Review*, September/October, 85(5), pp. 39-70.*

____ , Barry E. Jones and Travis D. Nesmith (1997). "Special Report: The Monetary Services Indexes Project of the Federal Reserve Bank of St. Louis," *Federal Reserve Bank of St. Louis Review*, January/February, 79(1), pp. 31-82.*

McCallum, Bennett T. (1988). "Robustness Properties of a Monetary Policy Rule," *Carnegie-Rochester Conference Series on Public Policy*, vol. 29, pp. 173-204.

____ (1993). "Specification and Analysis of a Monetary Policy Rule for Japan," *Bank of Japan Monetary and Economic Studies*, November, pp. 1-45.

Motley, Brian (1988). "Should M2 Be Redefined?" *Federal Reserve Bank of San Francisco Economic Review*, Winter, pp. 33-51.

Nelson, Charles R. and Andrew F. Siegel (1987). "Parsimonious Modeling of Yield Curves," *Journal of Business*, October, pp. 473-89.

Poole, William (1991). Statement before the Subcommittee on Domestic Monetary Policy of the Committee on Banking, Finance and Urban Affairs, U.S. House of Representatives, November 6, 1991. Government Printing Office, Serial No. 102-82.

Sharpe, William F. (1997). *Macro-Investment Analysis*, on-line textbook available at www.stanford.edu/~wfsarpe/mia/mia.htm.

Shiller, Robert (1990). "The Term Structure of Interest Rates," *Handbook of Monetary Economics*, vol. 1, B. Friedman and F. Hahn, eds., pp. 627-722.

Taylor, John B. (1993). "Discretion versus Policy Rules in Practice," *Carnegie-Rochester Conference Series on Public Policy*, vol. 39, pp. 195-214.

Note: *Available on the Internet at research.stlouisfed.org/publications/review/.