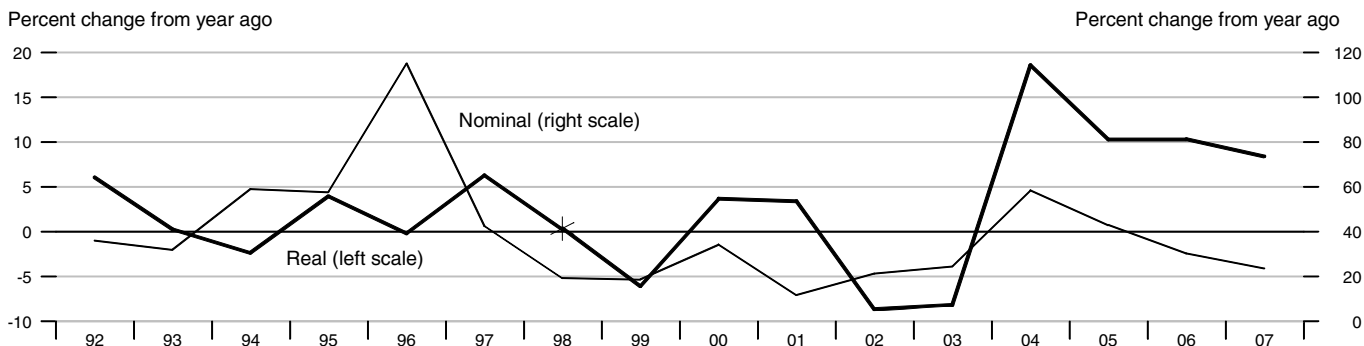
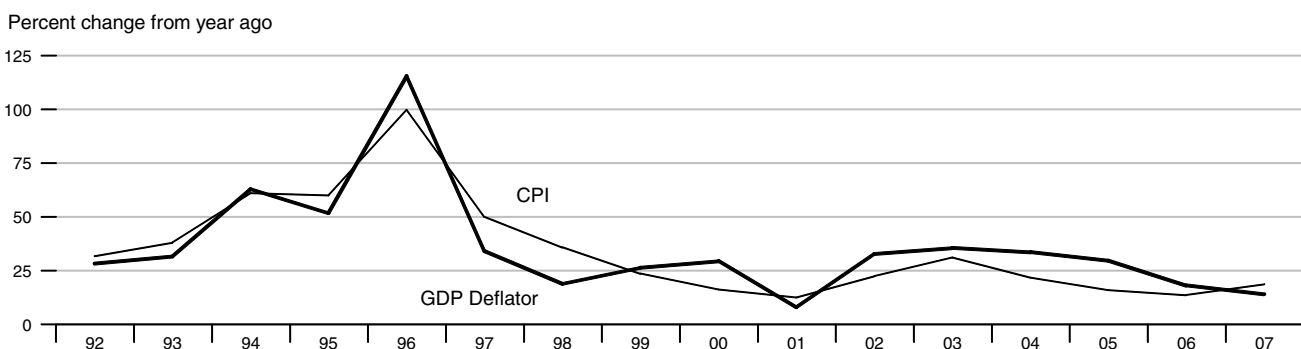


GDP

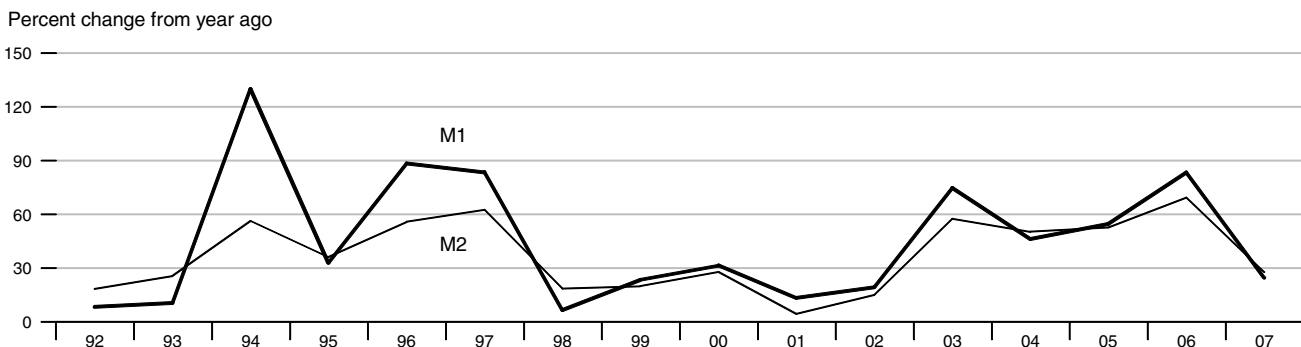


*Data prior to 1998 use a fixed 1984 base year and may not be strictly comparable with later figures.

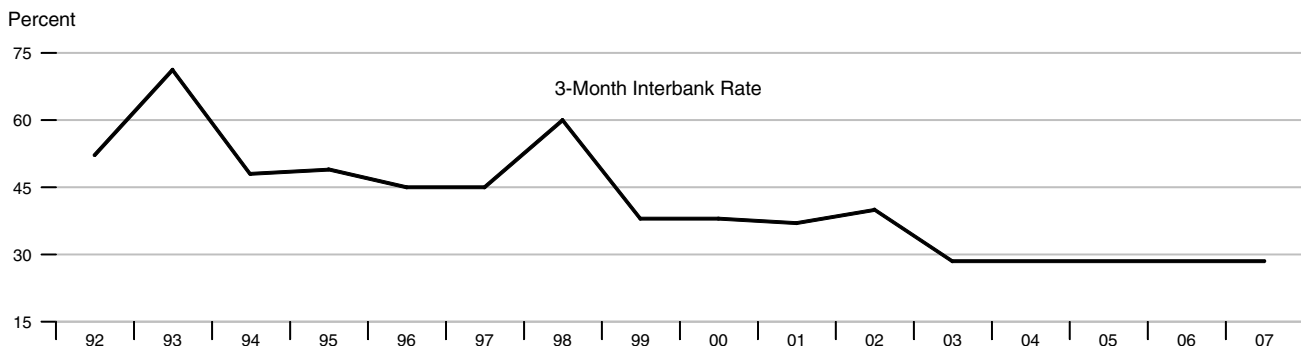
Inflation



Monetary Aggregates

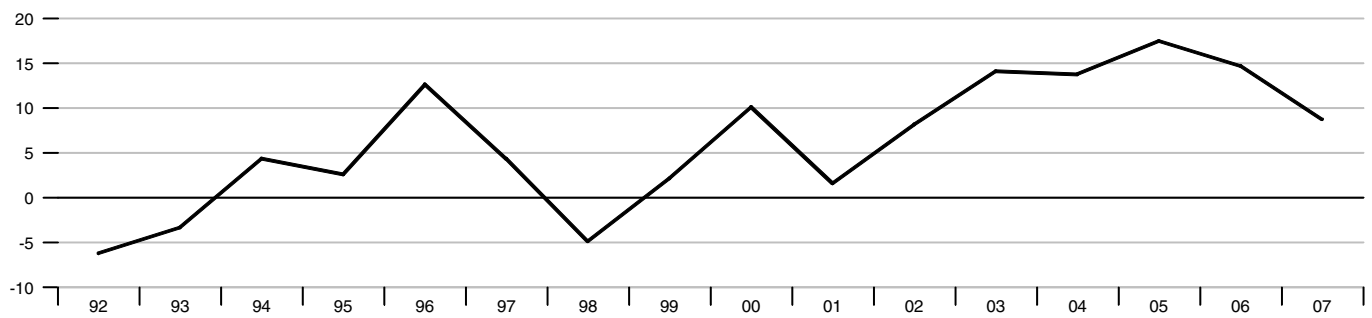


Interest Rates



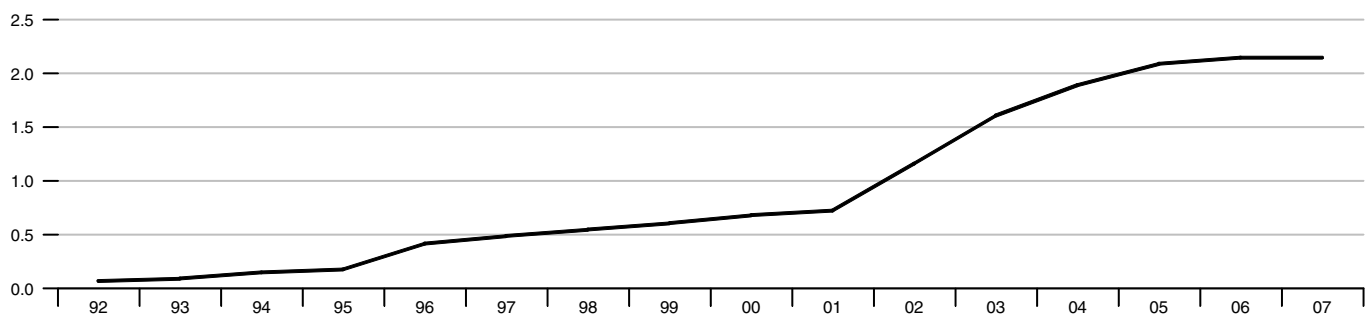
Current Account Balance

Percent of GDP



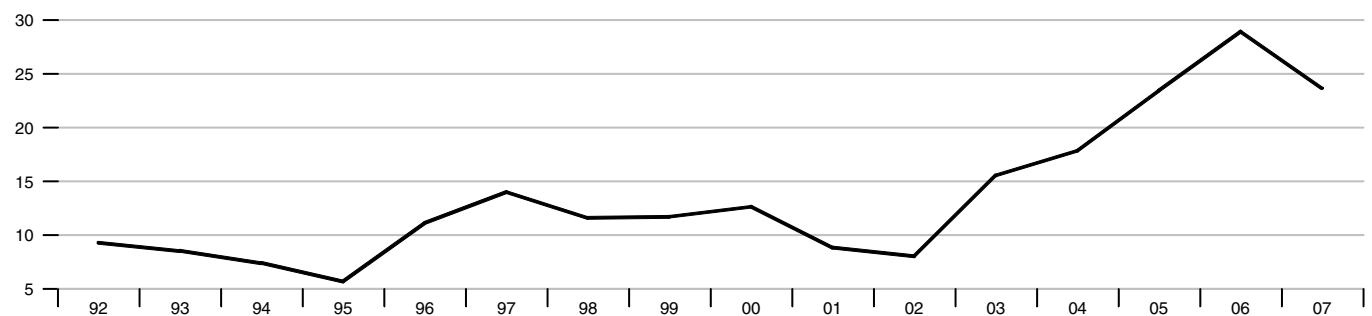
Exchange Rate

Venezuelan Bolivares per US\$



Foreign Exchange Reserves

Billions of US\$



Government Budget Balance

Percent of GDP

