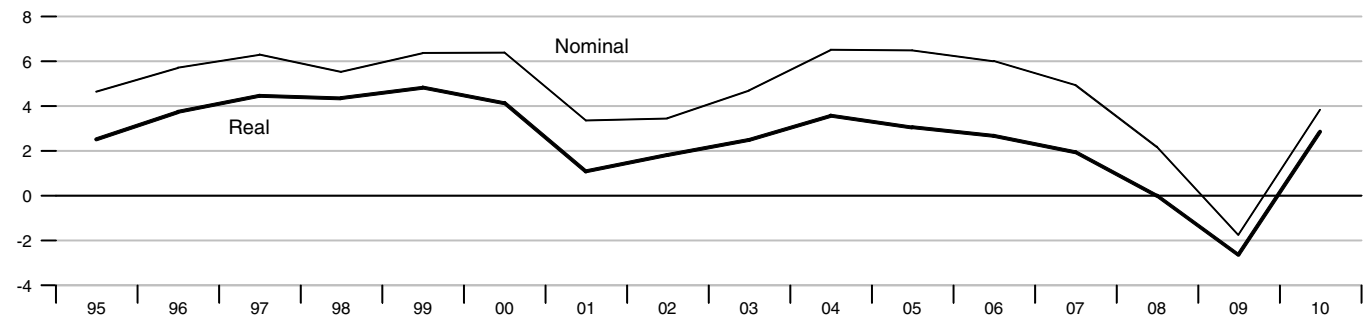


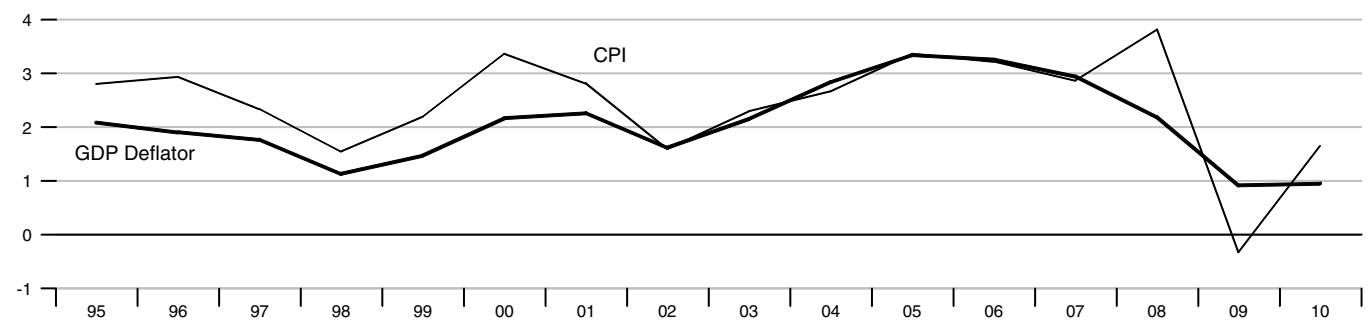
GDP

Percent change from year ago



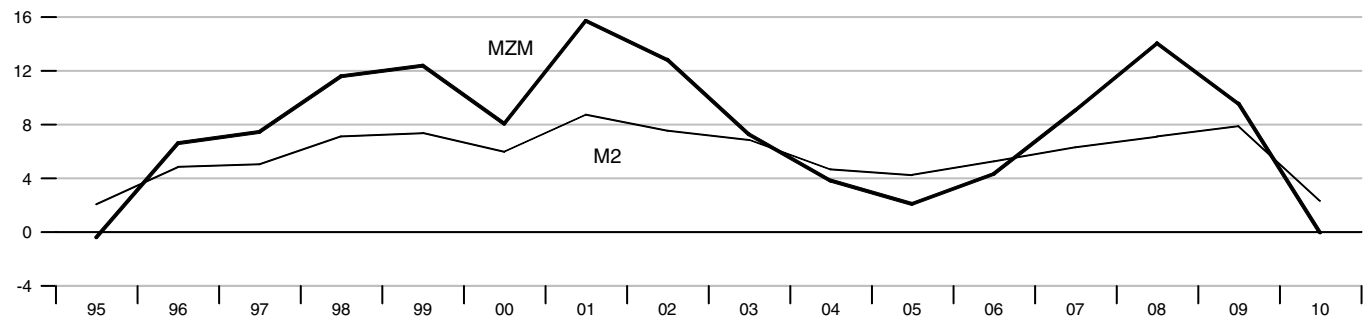
Inflation

Percent change from year ago



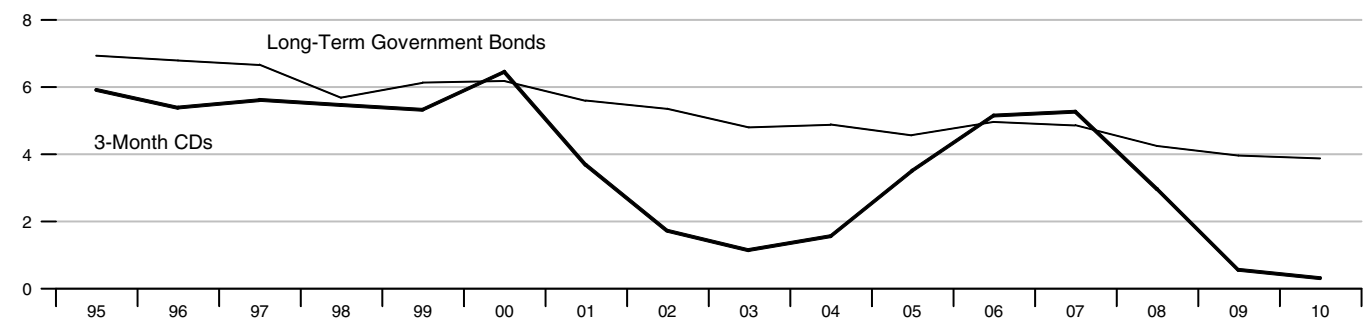
Monetary Aggregates

Percent change from year ago



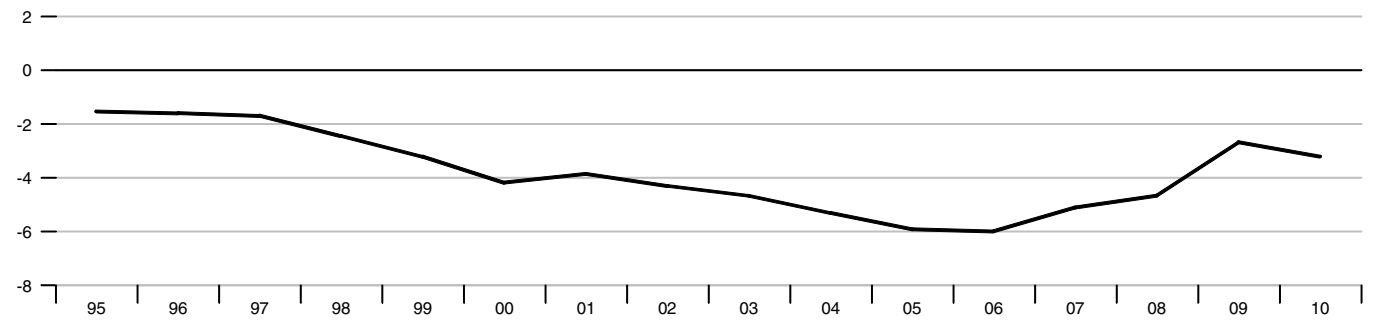
Interest Rates

Percent



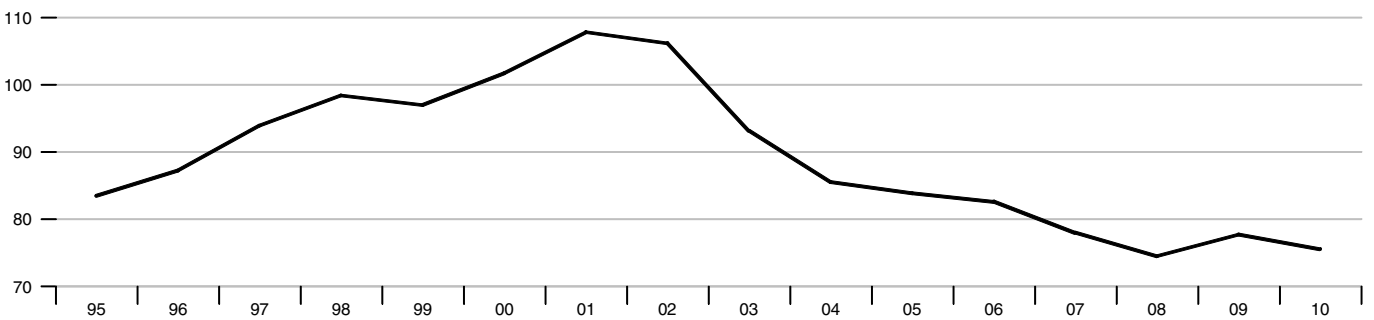
Current Account Balance

Percent of GDP



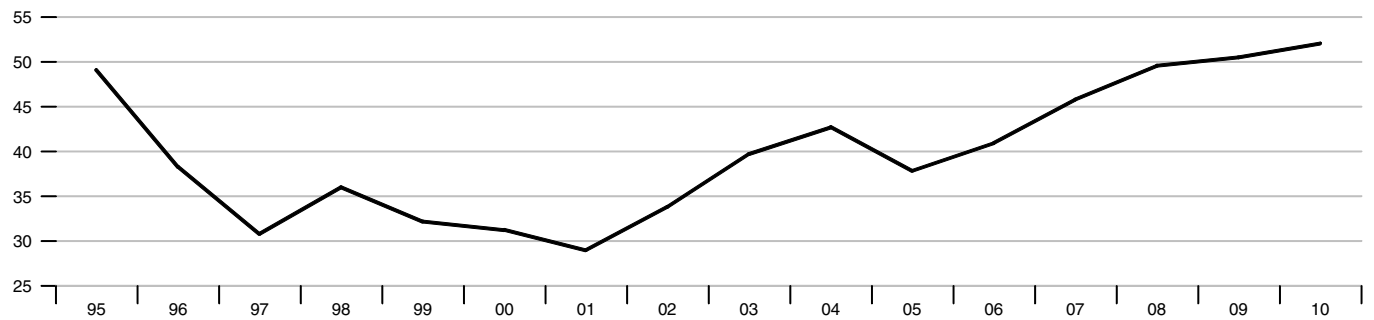
Exchange Rate

Trade-Weighted Exchange Index, March 1973 = 100



Foreign Exchange Reserves

Billions of US\$



Government Budget Balance

Percent of GDP

