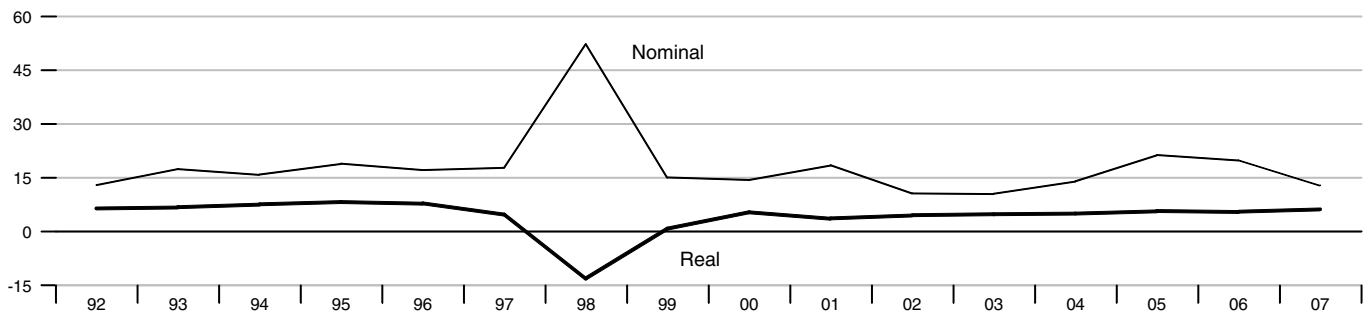


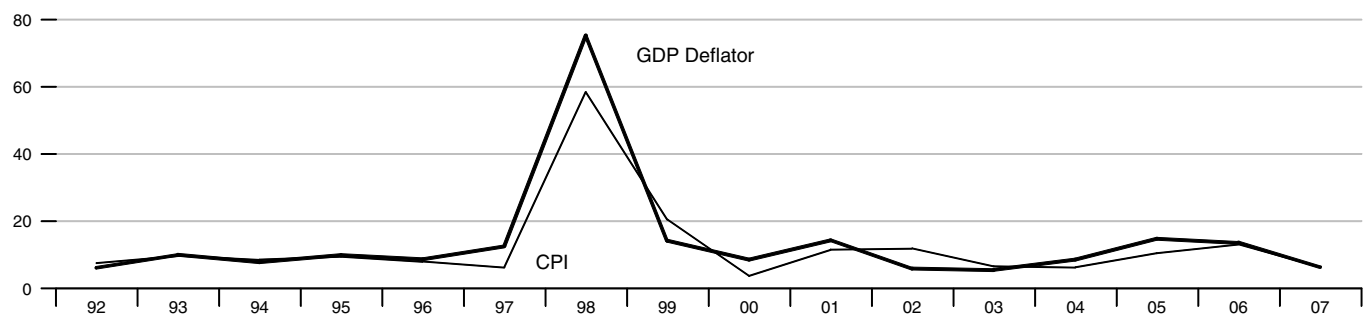
**GDP**

Percent change from year ago



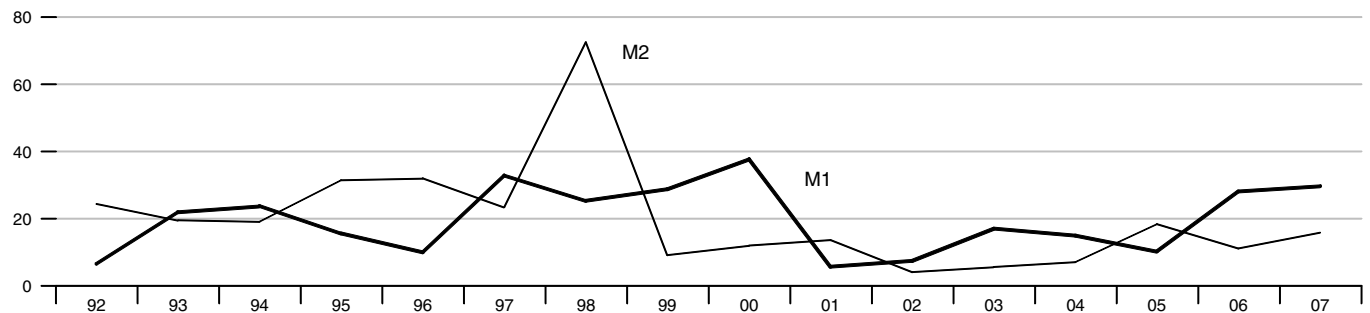
**Inflation**

Percent change from year ago



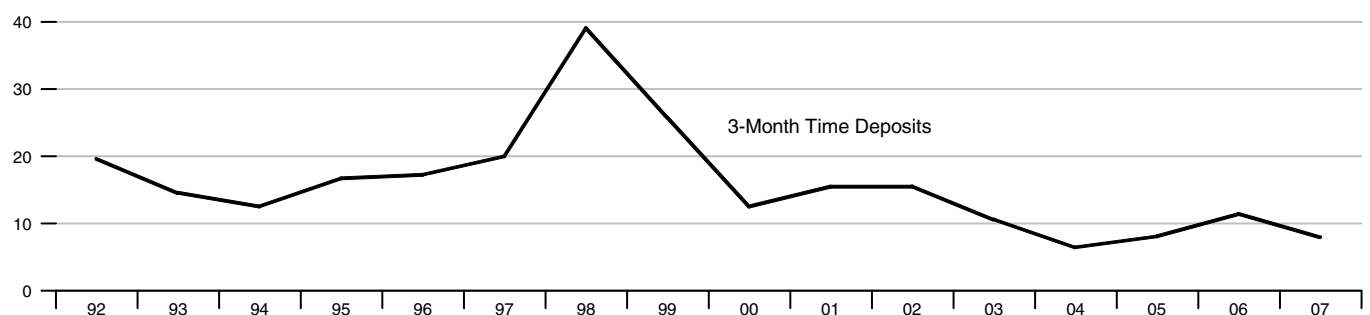
**Monetary Aggregates**

Percent change from year ago



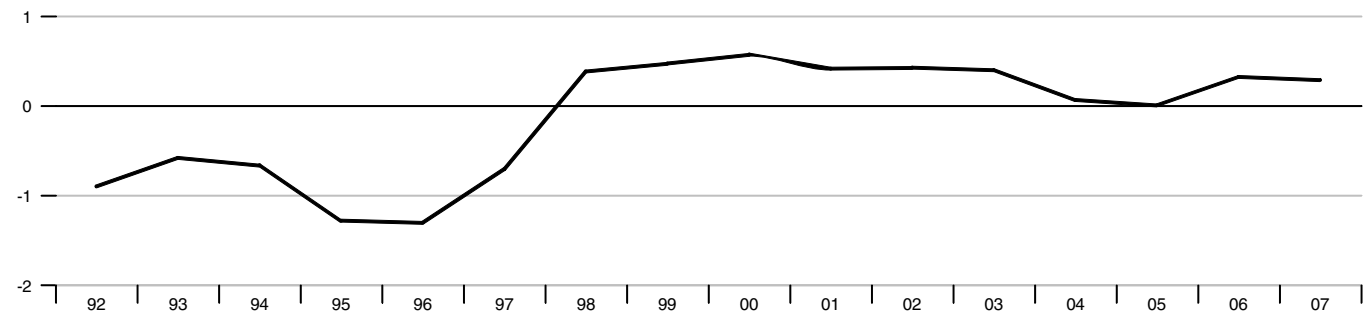
**Interest Rates**

Percent



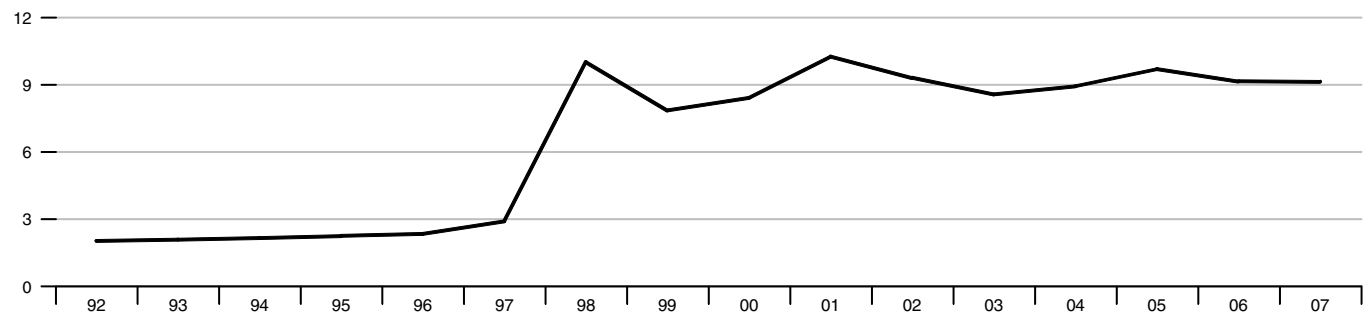
**Current Account Balance**

Percent of GDP



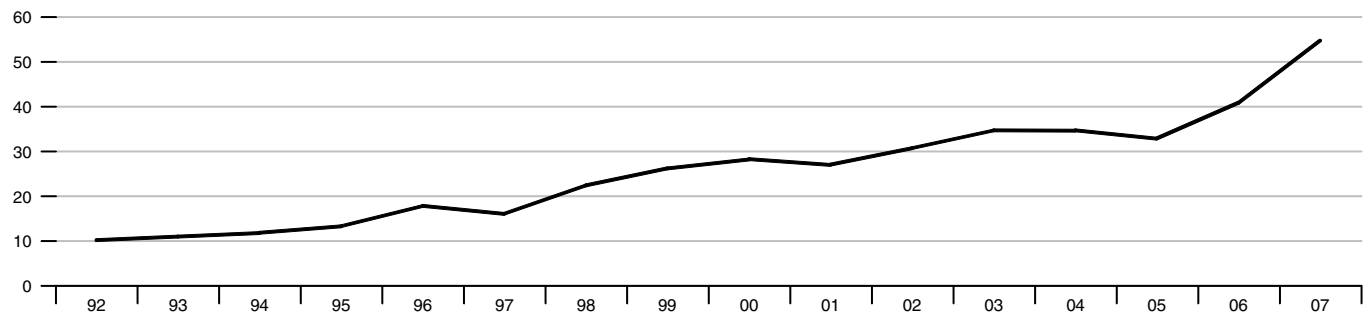
**Exchange Rate**

Thousands of Indonesian Rupiah per US\$



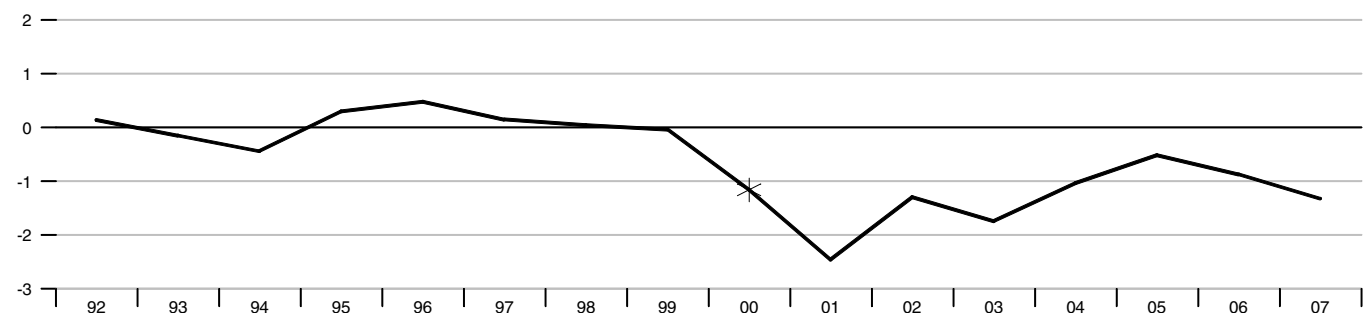
**Foreign Exchange Reserves**

Billions of US\$



**Government Budget Balance**

Percent of GDP



\*Data prior to 2000 are based on the fiscal year ending in March. Data from 2000 forward are based on the calendar year.