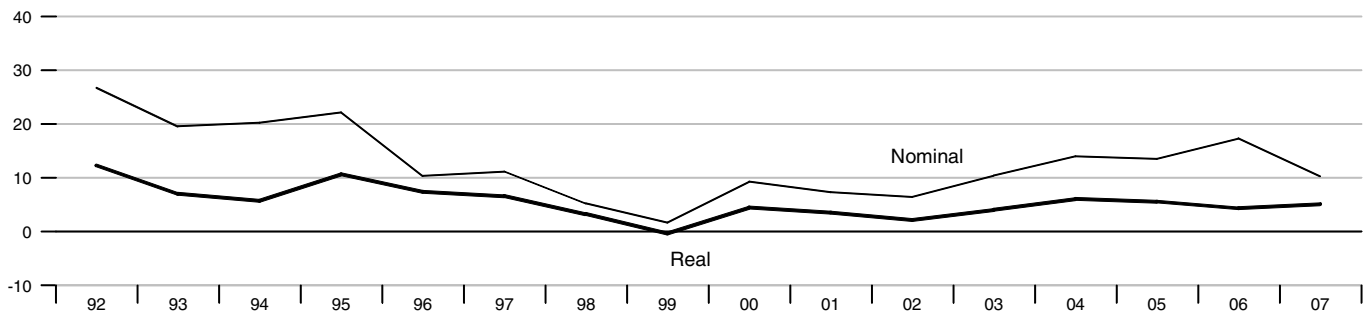


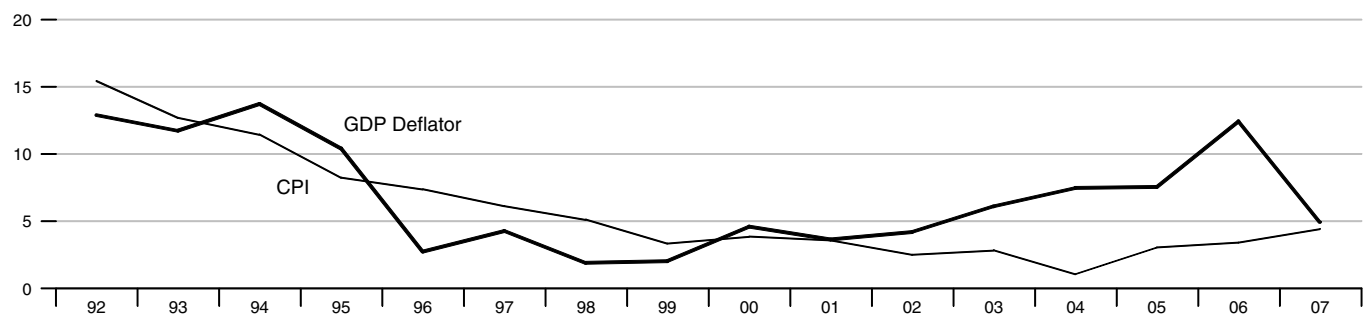
### GDP

Percent change from year ago



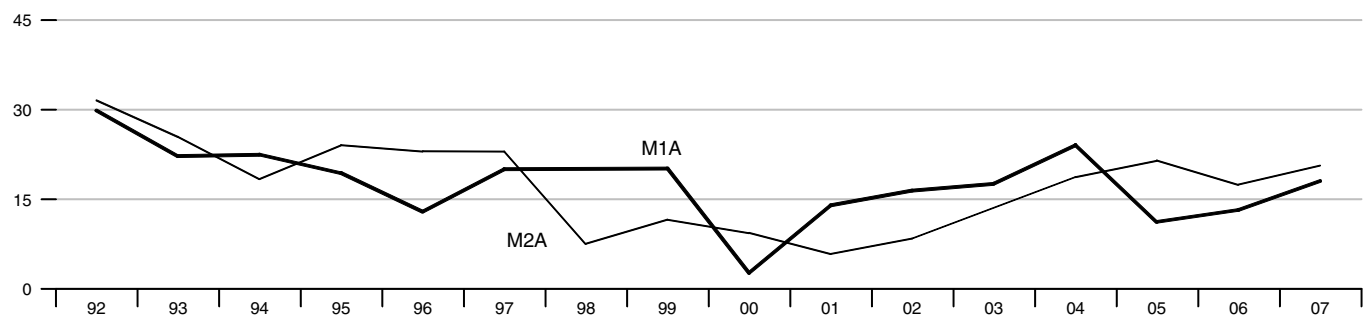
### Inflation

Percent change from year ago



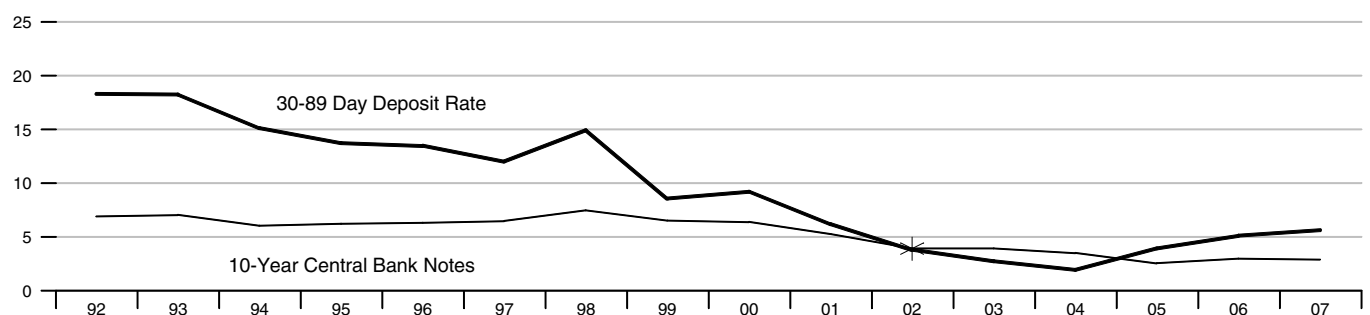
### Monetary Aggregates

Percent change from year ago



### Interest Rates

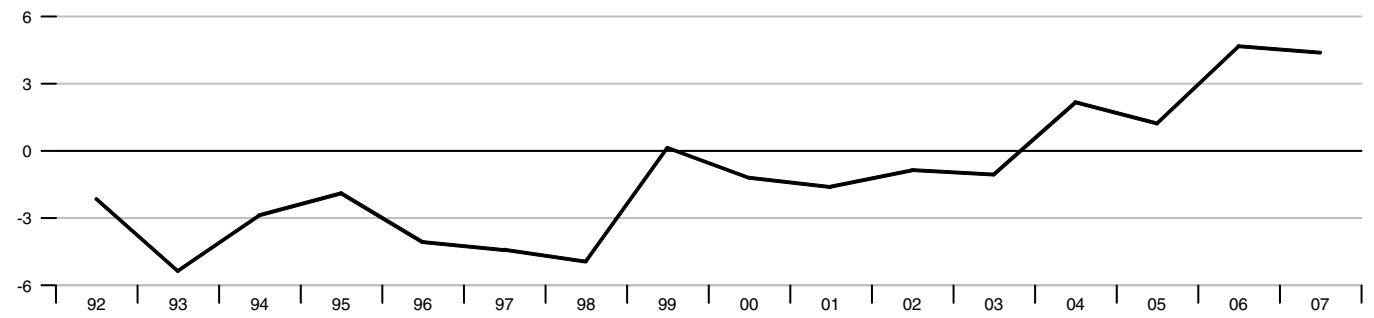
Percent



\*Data prior to 2002 for 10-year central bank notes may not be strictly comparable with later figures (see Notes).

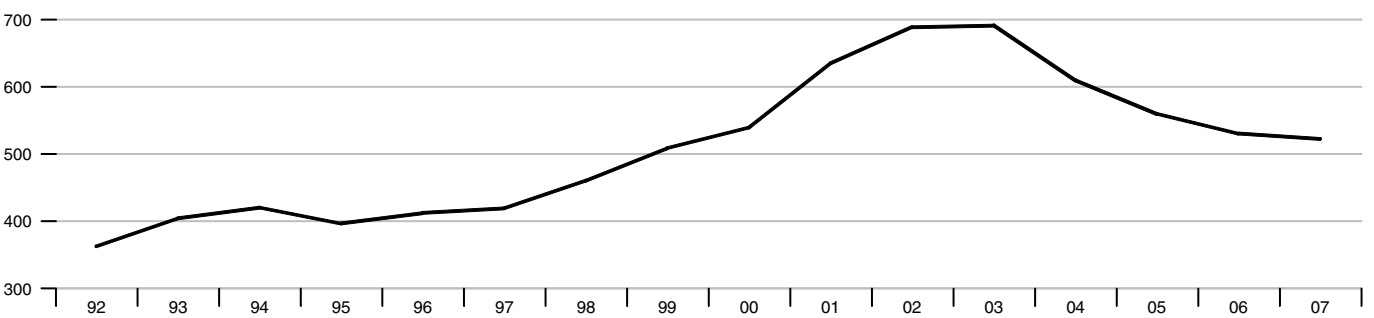
**Current Account Balance**

Percent of GDP



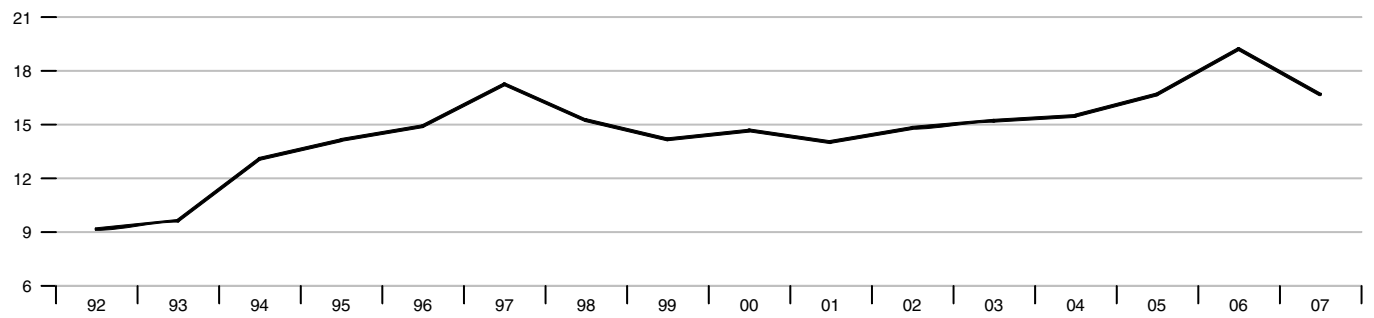
**Exchange Rate**

Chilean Pesos per US\$



**Foreign Exchange Reserves**

Billions of US\$



**Government Budget Balance**

Percent of GDP

