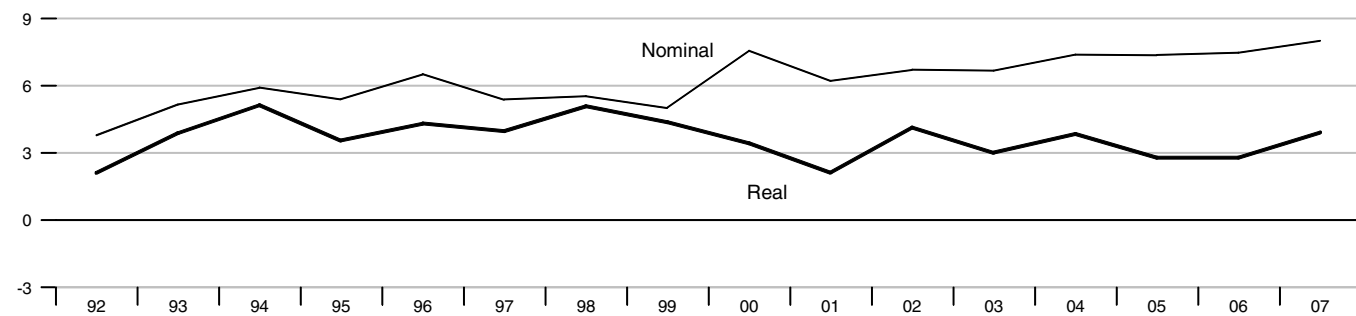


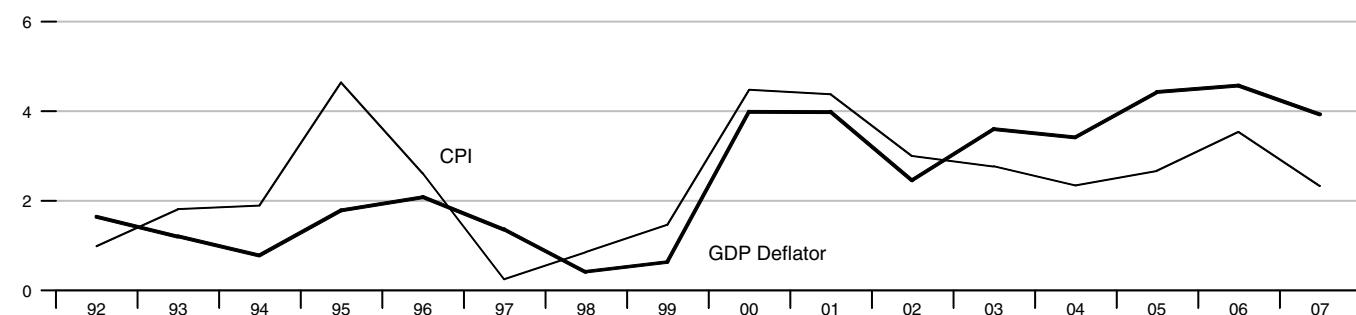
**GDP**

Percent change from year ago



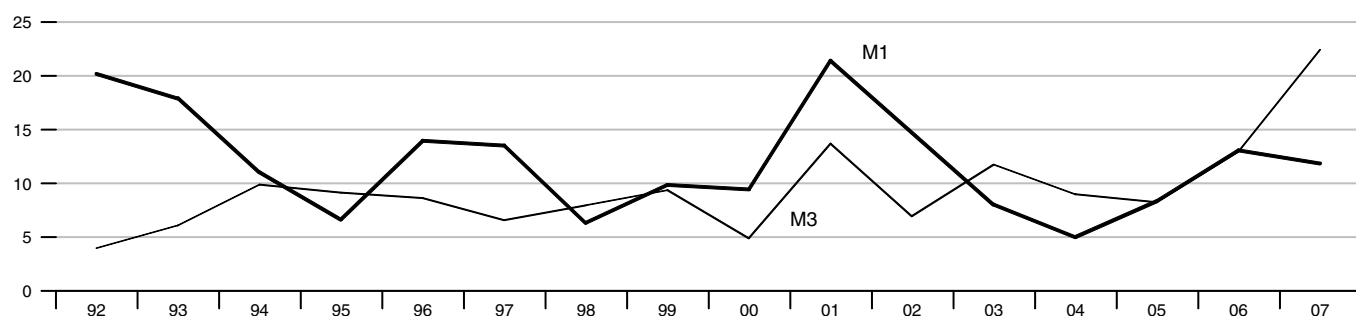
**Inflation**

Percent change from year ago



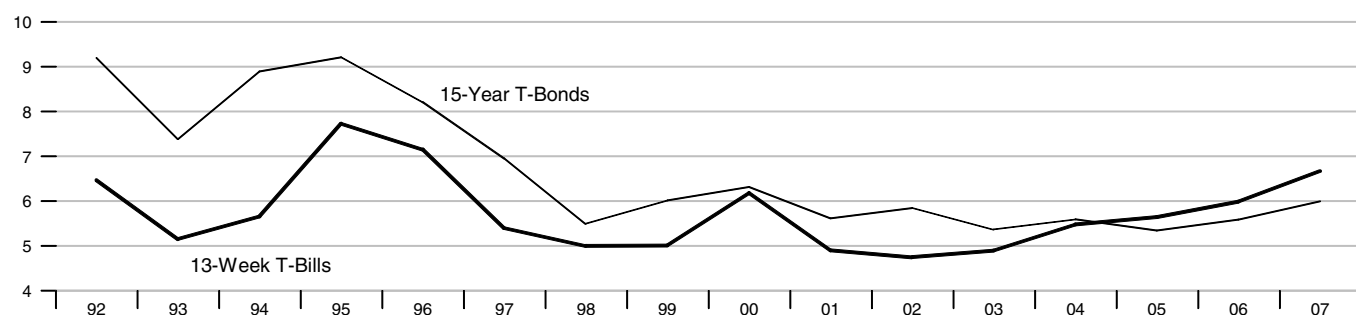
**Monetary Aggregates**

Percent change from year ago



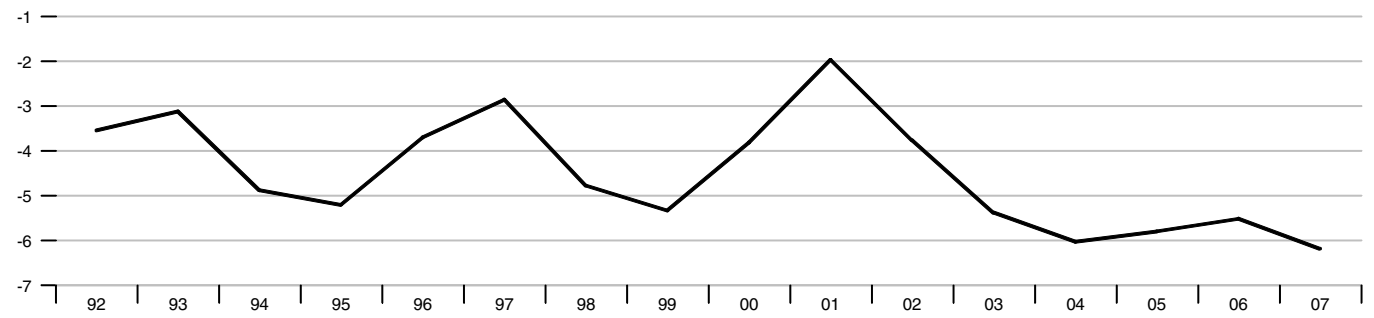
**Interest Rates**

Percent



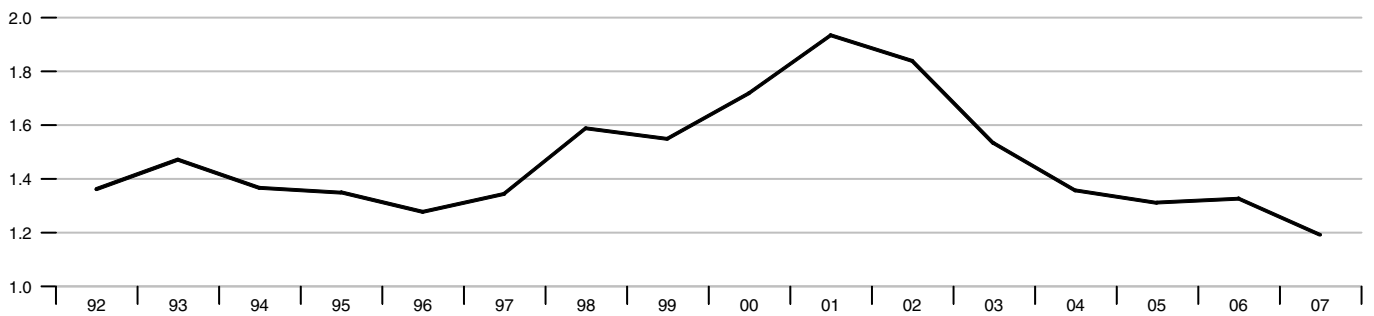
**Current Account Balance**

Percent of GDP



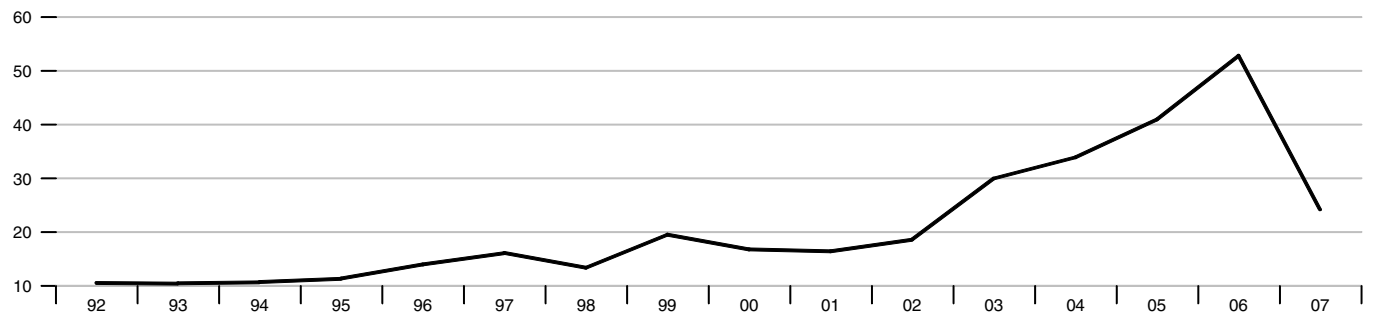
**Exchange Rate**

Australian Dollars per US\$



**Foreign Exchange Reserves**

Billions of US\$



**Government Budget Balance**

Percent of GDP

